

Projects

BAT WINGS



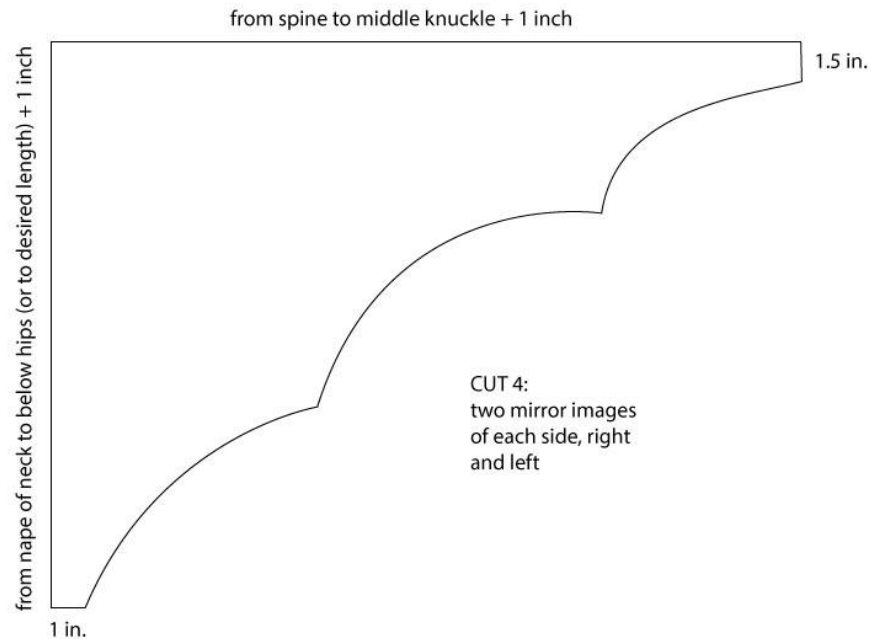
These Bat Wings make a great costume accessory that can go over coats when trick-or-treating out in the cold or over any outfit for make-believe occasions.

Created by: Delia Randall from the blog, [Delia Creates](#)

Supplies:

- Baby Lock® Katherine Sewing Machine
- Polyester fabric (about 1 yard, depending on size of wings needed)
- 1/4 -1/2 inch elastic
- Matching double fold bias tape (about 2 yards)
- Matching or coordinating all-purpose thread
- Universal needle
- Clover clips or small binder clips
- Walking foot preferable (BLG-WF)

Instructions:



1. Measure arm length from the knuckle of the middle finger to the middle of the back. Then measure from nape of neck to how long you want your wings to be (preferably below the hip area).
2. Cut four pieces, two mirror images of each side, right and left.



3. Sew wing fronts and backs together. Choose which side you want to be the right side (I chose the matte side to be the "right" side). Align right sides together and clip in place. Cut a 3 to 4 inch piece of elastic, and sandwich it in between the layers at the wing tip section with the raw ends

of the elastic sticking out. Make sure the loop is large enough to comfortably fit around the wearer's finger.



4. Sew around the perimeter of the wing, leaving the top edges open. Clip curves, and trim down seam allowance around points and corners to reduce bulk. Turn wing right-side-out and press with a warm iron setting appropriate for polyester.



5. Top stitch around the sewn edges of the wing. Sew two parallel lines of top stitching from each wing point to the top center back of the wing. Mark with tailor's chalk as a guide beforehand, if desired.
6. Repeat steps 3-5 with second wing.



7. Lay both wings as mirror images, next to each other. Clip double fold bias tape along top raw edges of wings, thus encasing the raw edges and connecting the wings together. You may use whatever width of bias tape you prefer.
8. Fold the raw edges of the bias tape under, and top stitch bias tape in place, taking care to catch both layers.





9. Cut two pieces of bias tape long enough to tie around the wearer's arm (small children = at least 12-18 inches, adults = at least 24-36 inches). Sew the bias tape pieces closed, and knot the ends.
10. Measure your wearer's shoulder width to determine bias tape tie placement. Center the ties on the wings to fit the shoulder width you measured earlier. Secure ties in place with a back-and-forth zig zag stitch.

Slide the wings on their fingers and tie to their shoulders. All done!



For other exciting projects like this one, visit Delia's blog www.deliacreates.com or visit our website at www.babylock.com.



©2016 Baby Lock USA. This project may be freely used by individuals for non-commercial purposes. Project instructions may not be sold or distributed without approval from Baby Lock. Baby Lock must be acknowledged as the source of the project instructions through copyright or online link.