



“Best Gift Ever- Personalized Embroidery”



It's that time of year, the time we over plan gifts to make and underestimate our available time. This gift is perfect for that last minute gift. It is so easy to make this personalized gift and the recipient will love the thoughtfulness.

Skill Level: Beginner

Created by: Debbie Cleek, Product Manager – Designer's Gallery Software

Supplies:

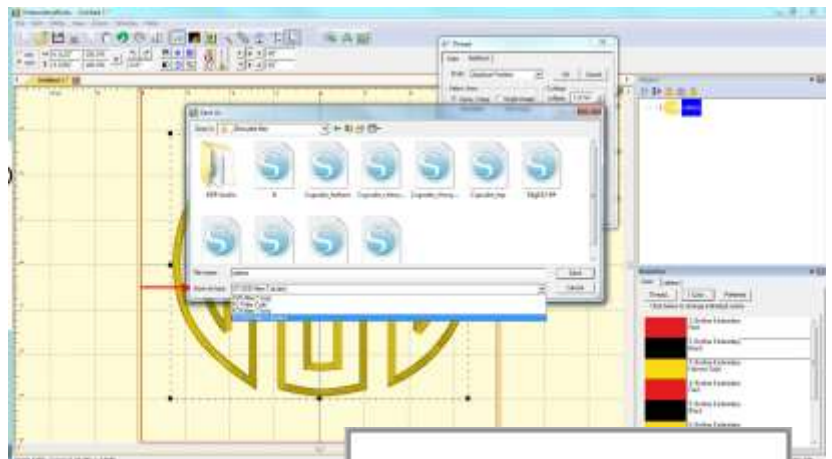
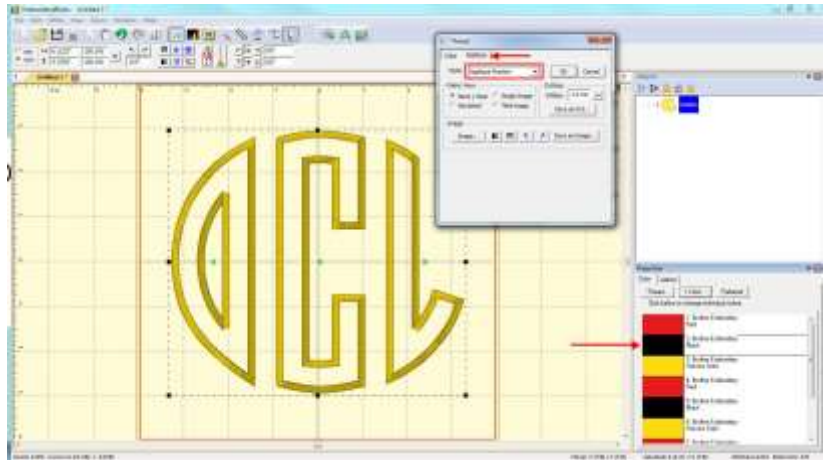
Baby Lock sewing & embroidery machine
Designer's Gallery EmbroideryWorks Everyday

Embroidery thread assortment
 Baby Lock Fusible Applique stabilizer
 Baby Lock Cut Away stabilizer
 Sweatshirt or similar type shirt
 Fat quarter to coordinate with shirt
 Favorite large applique monogram font
 Notions
 Silhouette Cameo Cutter with software or other computerized cutting machine (optional)



Instructions:

1. In the EmbroideryWorks software, select the monogram you would like to use. For this shirt, we used a large circle monogram.
2. Type the letters for your monogram.
3. Click the color tab in the Properties box. Select the second color for the first letter.
4. When the color box opens, select the Applique tab.
5. From the Style box, select Applique Position.
6. To create a file to use with your computerized cutter, first select Simulated from the Fabric View selections. In the Cutting selection box, click Save as Cut...to save a compatible file for your computerized cutter. There are four formats to choose from:
 - .svg – most any cutter
 - .plt – commercial format
 - .fcm – Scan-N-Cut
 - .studio – Silhouette
7. Press the fusible applique to the wrong side of the applique fabric. Follow the instructions for your cutter to open the files and cut the pieces with your computerized cutter.
8. Repeat this for each of the letters in the monogram.
9. If you do not have a computerized cutter, you can print a template to allow you to precut your fabric which eliminates cutting in the hoop.
10. Click the color tab in the Properties box. Select the second color for the first letter.
11. When the color box opens, select the Applique tab.



12. From the Style box, select Applique Position.
13. Select Simulated from the Fabric View selections and click OK.
14. Repeat this for each of the letters in the monogram.
15. Open the Program Preferences and select Printing, Print Setup.
16. Place a check in the Design Only, Print Applique, and Print Color Sequence boxes and click OK.
17. When you print the template of your design, the applique will print for use as a template to precut your applique pieces.
18. Click the Merge Design button and select the Applique Circle from the applique shapes.
19. Using the corner handles around the circle, size the circle to fit the monogram.
20. This design is ready to save and sew.
21. Hoop the shirt and cut away stabilizer in the appropriate hoop for your design.
22. Embroider the monogram following the applique steps.



For other exciting projects like this one, visit our websites at www.babylock.com or www.totallystitchin.net

