

## Projects

### "Travel Accessories"



You can create your own embroidery designs with the MasterWorks™ II digitizing software from Designer's Gallery®. Use any one of the already digitize fonts to create these stylish, personalized travel accessories.

**Skill Level: Intermediate**

Created by: Diane Kron, Embroidery and Software Project Manager


## Supplies:

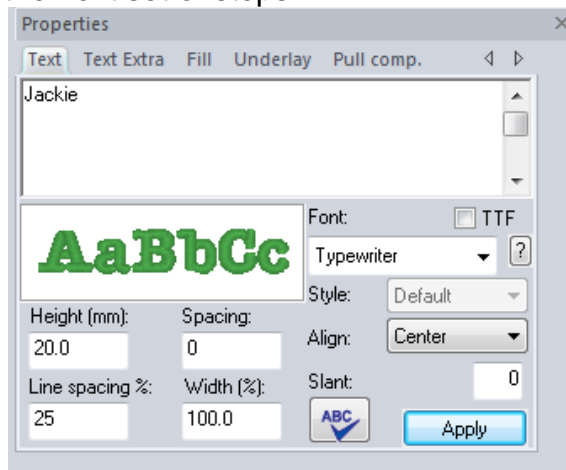
Baby Lock® Enterprise Embroidery Machine  
Tote Bag and Purse Hoops  
MasterWorks™ II from Designer's Gallery®  
Purchased travel accessories from ([www.allaboutblanks.com](http://www.allaboutblanks.com))  
2 travel makeup bags  
1 luggage tag to match  
Madeira® embroidery thread  
Cut-Away Soft stabilizer from Baby Lock  
Temporary spray adhesive

## At the Computer:

With this project you will create three different font designs using MasterWorks II and then send them to the embroidery machine.

### First Design:

1. Open MasterWorks II.
2. Click on the Text icon  on the left toolbar.
3. Click anywhere on the work space to open the Properties field and follow the next set of steps:

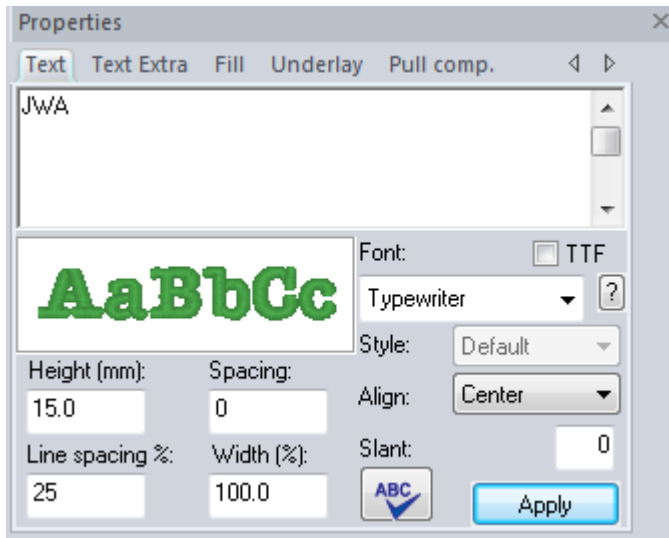


- In the Text field, type in your first name with the first letter capitalized.
- To select the font, click on the down arrow and select the Typewriter font.
- Since no other changes will be made to this design, click on Apply.
- Save this design as a .blf file that should be saved in the Working file folder.
- Save the design in the .pes file format and send to the embroidery machine.

### Second Design:

1. Click on the New Page icon .

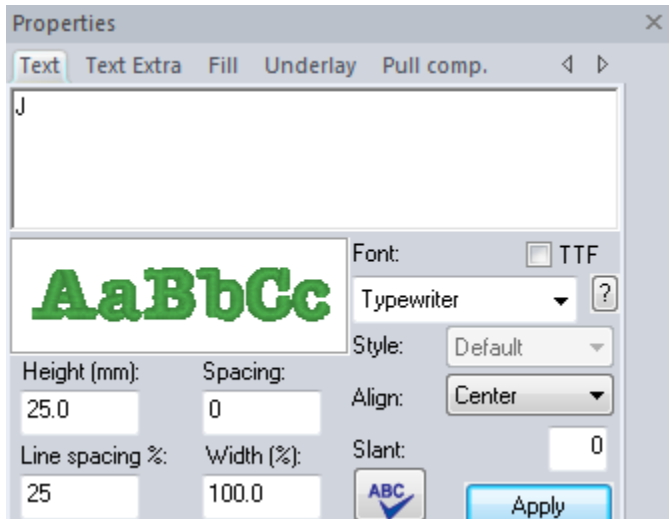
2. Click on the Text icon and click on the workspace to open the Properties field. Follow the next set of directions to create the second design:



- Set the Caps Lock on so that the letters are all capitalized.
- Type in the initials with the initial of the first name typed first, then the initial of the last name and end with the middle name initial.
- Select the Typewriter font.
- Set the Height to 15.0mm.
- Click on Apply.
- Save the design as a working file format.
- Send the design to the machine in the .pes file format.

### Third Design:

1. Click on the New Page icon. Click on the workspace to open the Properties field and follow the next set of directions to create the third design:



- In the Properties field, type in the initial from your first name.
- Select the Typewriter font.
- Change the Height to 25mm.
- Click on Apply.
- Save the design as a working file format.
- Send the design to the machine in the .pes file format.

### At the Embroidery Machine:

1. Hoop the stabilizer in the “5 x 7” Tote Bag and Purse hoop. Spray the hooped stabilizer with the temporary spray adhesive. Repeat for each hooping.
2. Using a water soluble marking pen, mark the center position for the first design on the travel bag. In the sample, the name was placed 2” above the bottom edge. On the smaller bag the monogram lettering was placed 1½” inch from the top edge. Place a cross mark in the center of the luggage tag.
3. Place a Positioning Sticker over the center cross mark on each of the items.
4. Place the first item in the center of the hooped stabilizer.
5. Retrieve the first design on the embroidery machine’s workspace.
6. Place the hoop on the machine.
7. Select the Positioning icon on the machine. The machine will locate the sticker and align the design for perfect placement.
8. Embroider the design.
9. Repeat for the remaining two pieces.

For other exciting projects like this one, visit our Web site at [www.babylock.com](http://www.babylock.com)

