

Projects

Sashiko Decorative Stitched Jacket



Applying decorative stitches with the Baby Lock Sashiko machine will bring a new found excitement for sewing by applying rows of Sashiko stitches to add texture to the fabric. Then finish the jacket with the Baby Lock Destiny II sewing and embroidery machine.

Skill Level: Intermediate

Created by: Diane Kron, Software and Embroidery Project Manager

Supplies:

Baby Lock[®] Sashiko quilting machine
Baby Lock Destiny II sewing and embroidery machine
Butterick[®] pattern #B6106 View C
Brown Linen fabric

Baby Lock Ultra-Soft Stabilizer
Madeira® Cotona thread for sewing to match the fabric
Madeira Frosted Matt Embroidery Thread (Pink)
Chalko™ Marking Pencil
3" x 18" Straight edge ruler
Sew-On Snaps from Dritz® (Size 4)
6 different buttons (size 7/8")
Basic sewing supplies



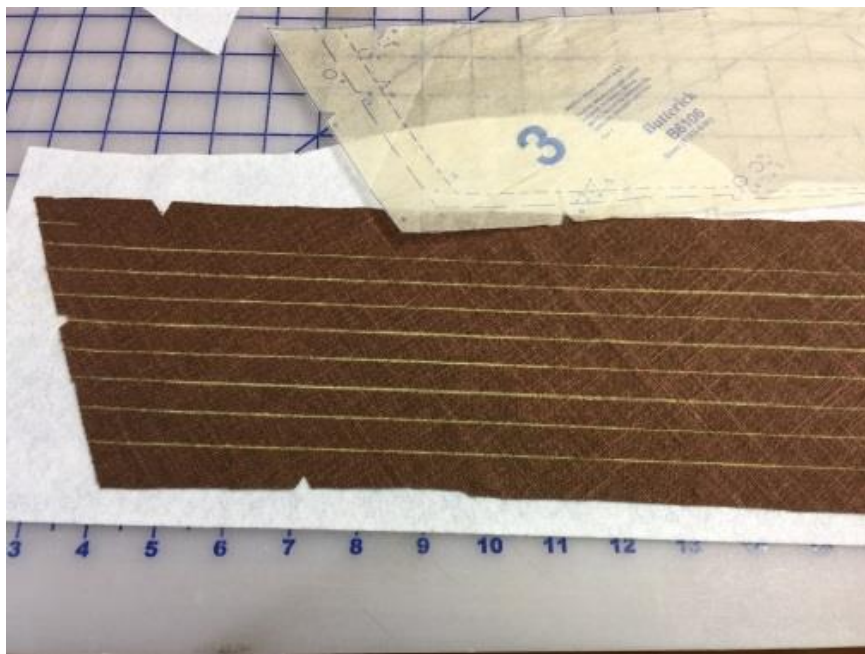
Instructions:

1. Follow the guide sheet from the pattern to layout and cut out the pattern pieces.
2. Fuse the Baby Lock Ultra-Soft stabilizer to the backside of the Jacket front sections. This will help to stabilize the fabric when applying the Sashiko decorative stitches.



3. Using the Chacko marking tool and the straight edge ruler to draw straight lines on both front sections of the jacket (*as shown in the above illustration*). The first line was placed approximately three inches from the center of the jacket. Then place additional lines approximately 2" away from

the first. In this project 5 lines were placed. Repeat for the front bands by fuse the stabilizer and drawing Chalko lines approximately 1" apart from each other. Repeat for all of the bands.



4. Set up the Baby Lock Sashiko machine. Thread the machine using the Madeira Frosted Matt Embroidery thread while following the directions from manufacturer. I recommend that once you have the machine set up, create a sample stabilized piece of fabric for test sewing. This will help you visualize how the stitch will look and allow you the time to make adjustments as needed.
5. Place the first section under the presser foot as shown in the following illustration. **Tip:** Always take your first stitch in the fabric. Use the drawn lines as your guide for sewing a straight line while using the edge of the presser foot to run along that line. Go slow and apply the rows of stitching on all of the sections.



6. Set up the sewing machine for sewing. Piece the jacket together while following the pattern guide sheet.

7. Before sewing the sleeves to the jacket, apply 6 rows of Sashiko stitches to the bottom edges on each of the sleeves. Continue on with the construction of the jacket.
8. To complete the jacket, sew the snaps to the jacket then sew the buttons over the snaps.

For other exciting projects like this one, visit Baby lock at www.babylock.com.



©2017 Baby Lock USA. This project may be freely used by individuals for non-commercial purposes. Project instructions may not be sold or distributed without approval from Baby Lock. Baby Lock must be acknowledged as the source of the project instructions through copyright or online link