

Palette 5.0 Update

Software Update for Palette Version 5.0x
Version 5.02 Added: 07/14/2003

If you use version 5.0 or 5.01, an update is available for download. See information below for update information and how to download the update.

NOTE: Before continuing, please make sure that you have an original FULL VERSION of the Palette software on your PC. (To find out, check your CD or floppy disk label)

For Windows 2000 Users:

If you have Windows 2000 with SERVICE PACK 3 or SERVICE PACK 4 on your PC, or, if you are about to install SERVICE PACK 3 OR SERVICE PACK 4 on your Windows 2000 operating system, please make sure that you update Palette Version 5.0.

[Click here for Palette 5.0 update before continuing.](#)

After updating for Service Pack 3 or 4, you can update to Palette V. 5.02.

Update Information about Version 5.02

“General”

- Updated device driver for USB Reader/Writer Box.

“Layout and Editing” and “Design enter”

- The “Cross Stitch” will now be generated without any under sewing stitches.
- The “Zigzag Stitch” will always be generated correctly.

“Layout and Editing” Only

- The PES file will now be saved correctly even if you save your design by earlier version format.
- The application will not close unexpectedly even if you use the “Photo Stitch” function after using “Print Preview”.
- The application will not close unexpectedly even if you check the “With Basic Color” box in “Design Property” window.
- The “Semi-automatic tool” no longer has a ghost line.
- The object created with the “Manual Punching Tool” or converted by “Stitch to Block” will now control its “Running Stitch Pitch” properly.
- The object created with the “Manual Punching Tool” or converted by “Stitch to Block” will now be easy to edit.
- The “Portrait” image will no longer have any gaps among its parts.

How to download the update program to your hard drive:

1. In Windows Explorer, make a temporary folder (ex. C:\Temp) on your PC for the update file to be downloaded.
2. Download the file from the [Baby Lock Web site](#).
3. On the dialog box, direct the newly created temporary folder (ex. C:\Temp) where the downloaded file should be downloaded to.
4. On the dialog box, click "Save To" to download the file to the temporary folder.
5. See directions below on how to update your Palette Version 5.0

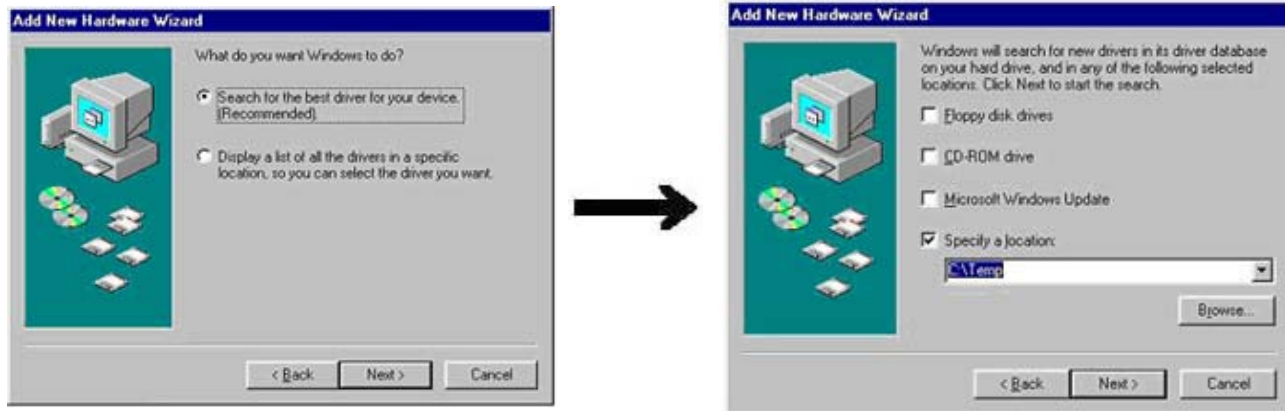
How to update your Palette 5.0x

1. **Disconnect the USB Card Reader/Writer box from your PC.**
2. Make sure that you have a FULL VERSION of the Palette software on your PC before updating your Version 5.0.
3. Double-click on the downloaded "PALTo502_Eng.exe" file from C:\Temp folder in Windows Explorer. (Or go to Start menu on Task Bar, select Run, and type "C:\Temp\PALTo502_Eng.exe" file name, click OK.)
4. The update process will automatically start.
5. Follow the instructions given in the dialog boxes and proceed through the update process.
6. **At the "Are you updating PTS or 5.0 Palette" prompt, select "NO" if you are updating Palette 5.0.**
7. After the installation process finishes, re-connect the USB Card Reader/Writer Box to your PC. A Hardware Wizard will appear to install the driver for your USB Card Reader/Writer Box. See the following directions for your particular operating system.

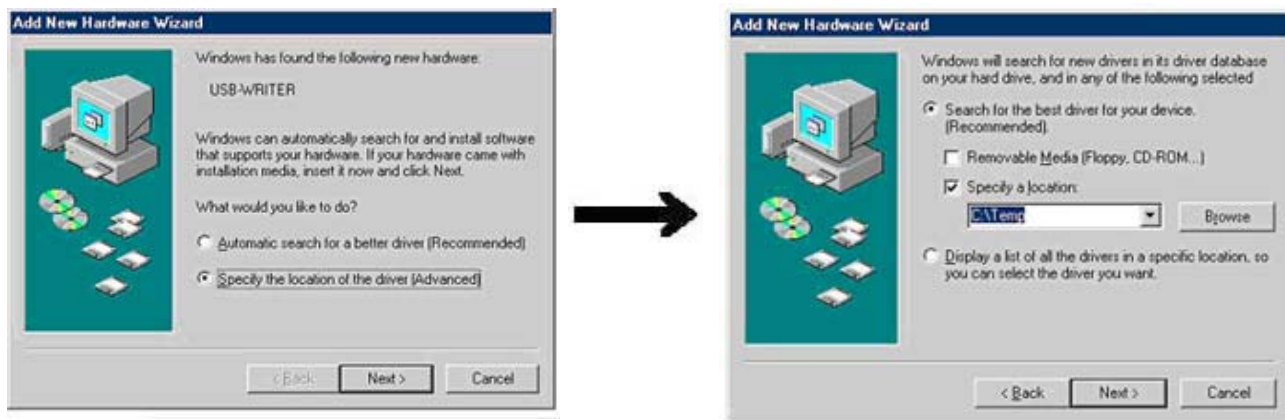
For Windows 98, Windows Me, Windows 2000 users do the following:

The Hardware Wizard will be launched automatically. To install the new device driver for the USB Reader/Writer Box, please specify the temporary folder (ex. C:\Temp) where the downloaded update file is stored.

<Windows 98>



<Windows Me>



<Windows 2000>



For Windows XP users only do the following:

A: “If your PC is connected to the Internet”

When you connect your USB Reader/Writer Box to your PC, you will see the following message in the following sequence and the installation will be completed.

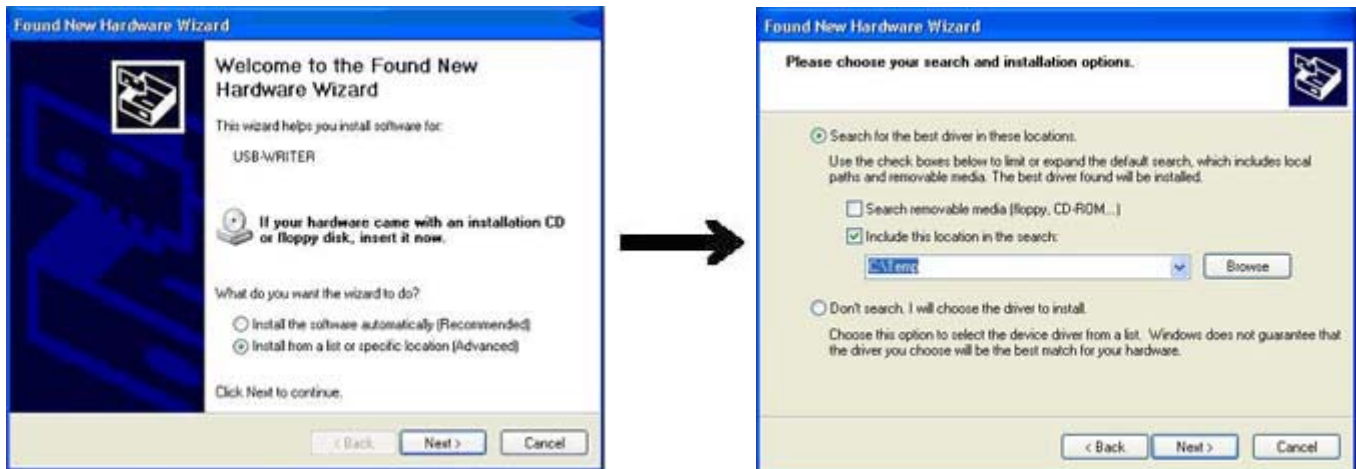


After “Your new hardware is installed and ready to use.” is displayed, Palette 5.0 will be updated to Version 5.02 and will be ready to use.

*If the message is not displayed and the installation is not completed, please contact your computer support to manually install the USB driver.

B: “If your PC is NOT connected to the Internet.”

When you connect your USB Reader/Writer Box to your PC, the Hardware Wizard will be launched automatically. To install the new device driver for the USB Reader/Writer Box, please specify the previously created temporary folder (ex. C:\Temp) where the downloaded file should be stored.



Once the Hardware Wizard finishes, Palette 5.0 will be updated to Version 5.02 and will be ready to use.

NOTE:

After updating your Palette Version 5.0 with 5.02 update if for some reason you have to un-install the Palette software from your PC, remember to re-install Palette 5.0 first then install 5.02 update.