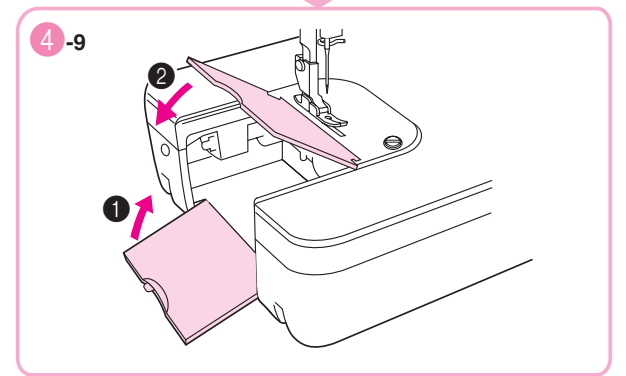
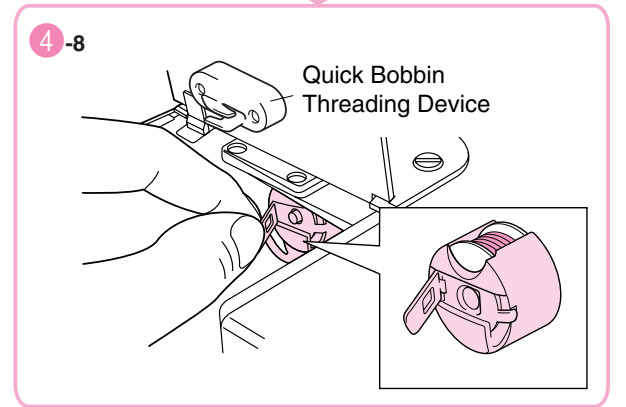
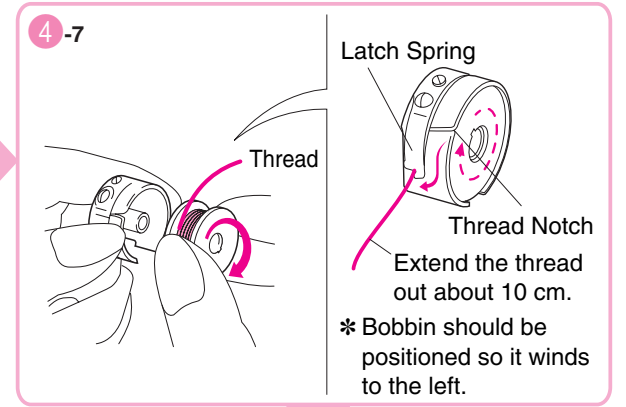
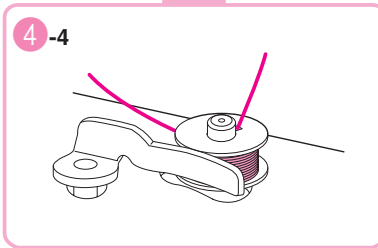
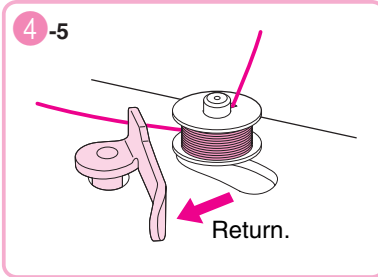
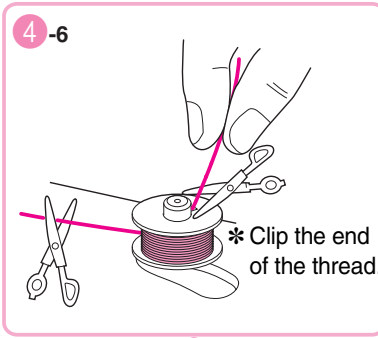
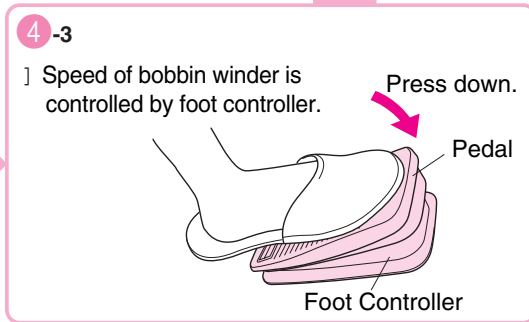
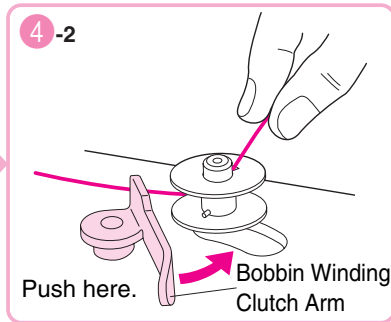
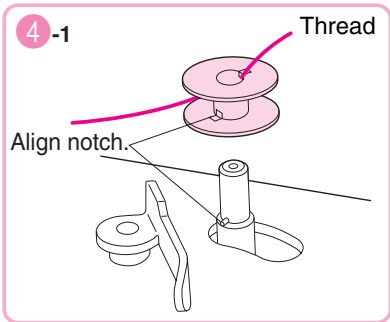
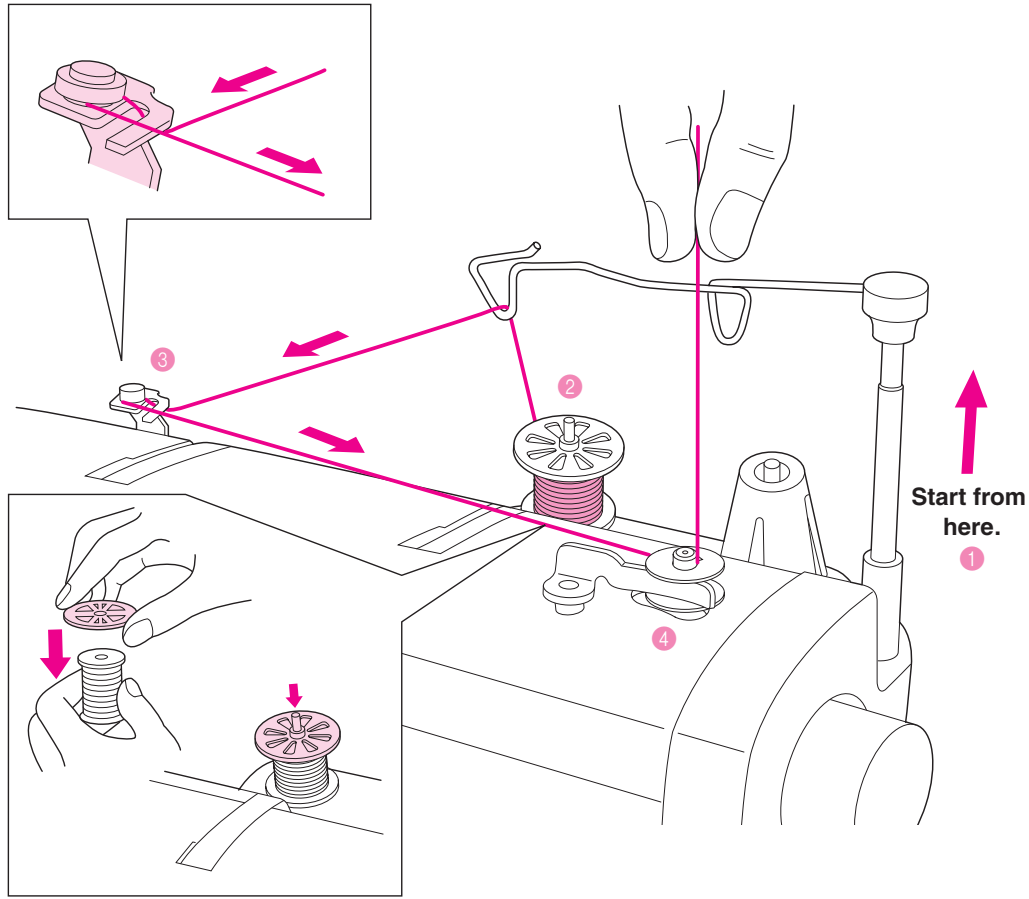
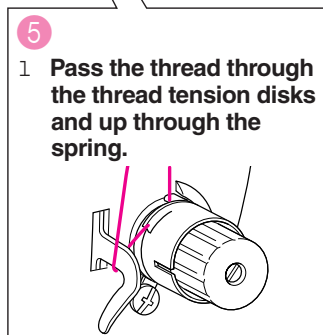
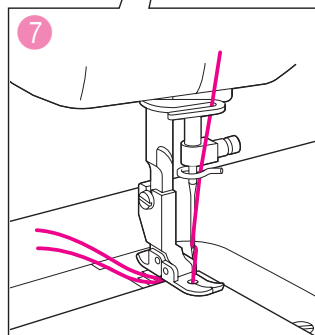
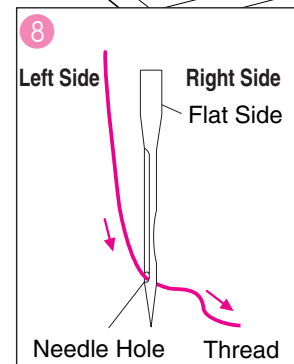
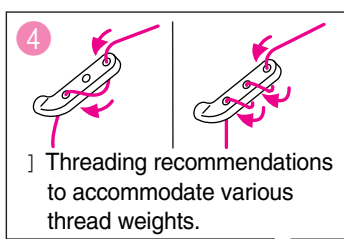
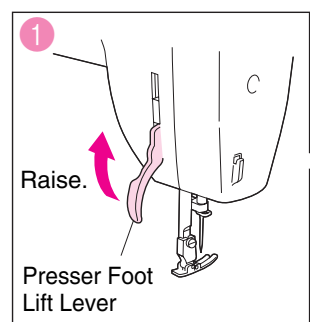
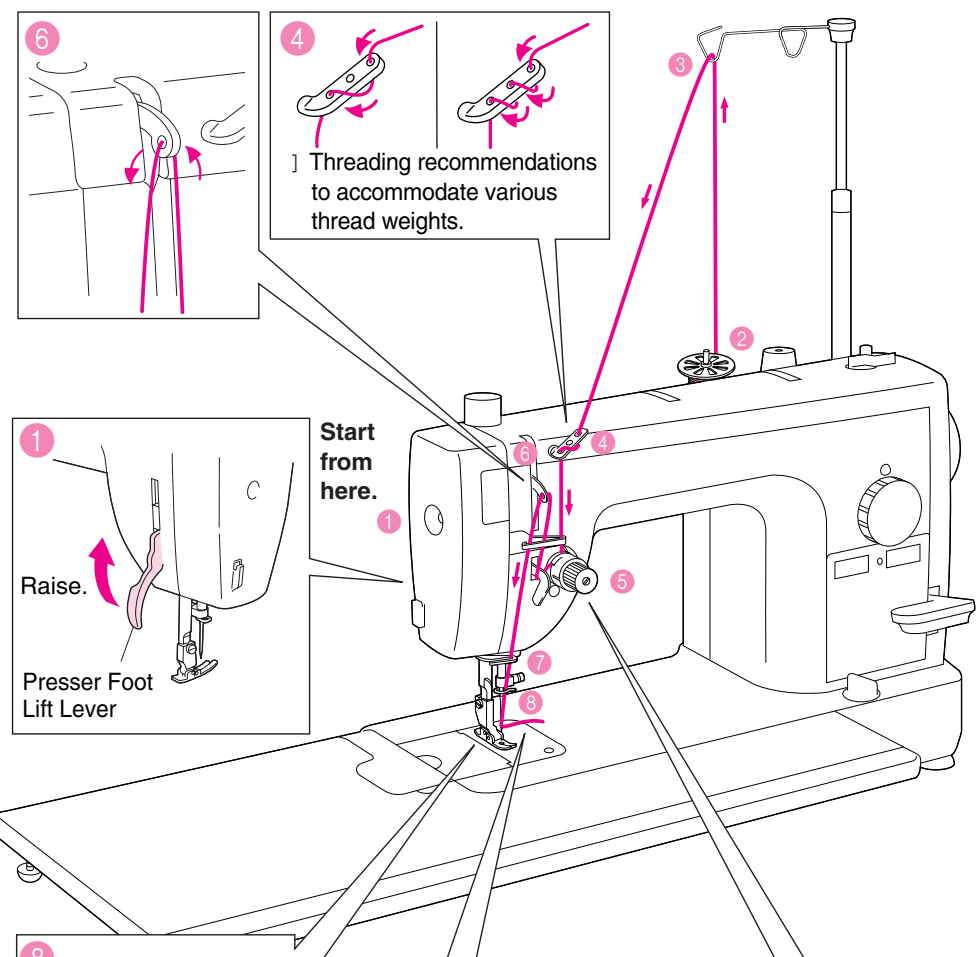


Quick Reference Guide

1. Winding the bobbin thread 1 Please start from here. 1

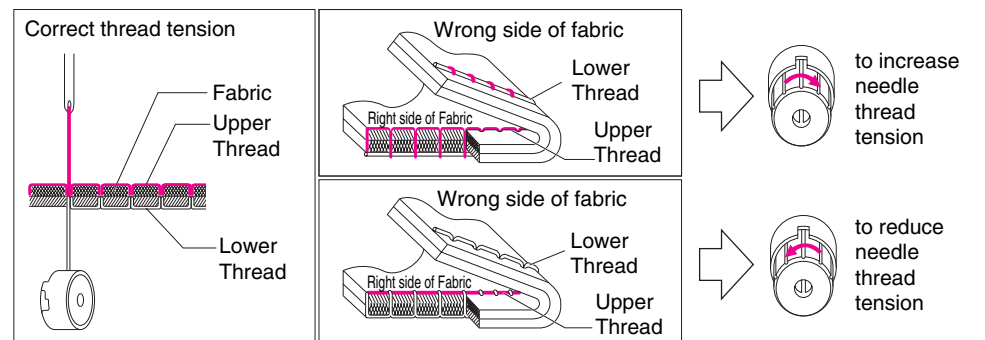


2. Upper Threading



Thread Tension

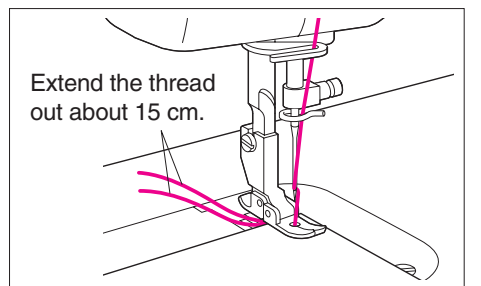
Adjust bobbin thread to match that of upper thread.



Incorrect thread tension can lead to such undesirable results as loose upper or lower stitches, puckered seams and thread breakage.

Stitch Samples

Raise the needle, place the fabric under the presser foot, lower the holder, then test sew.



1 Selecting the proper needle for use with the fabric and thread you are working with

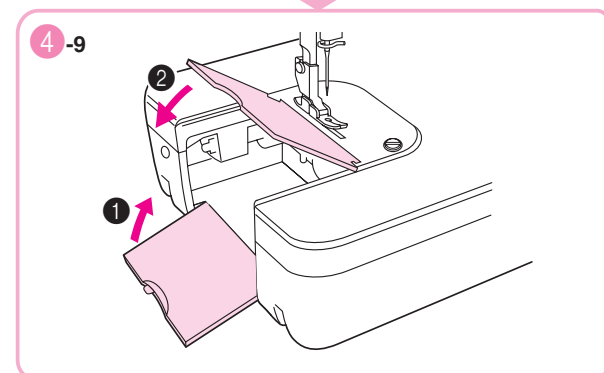
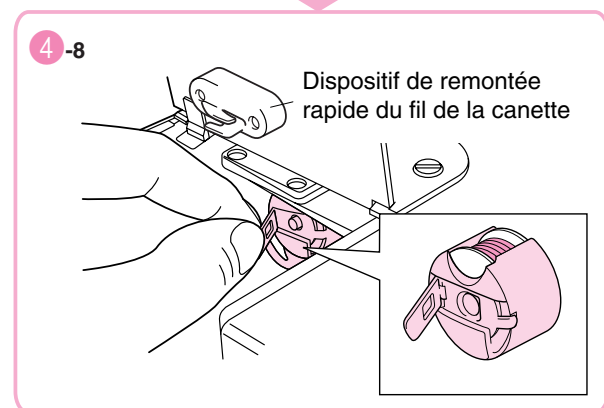
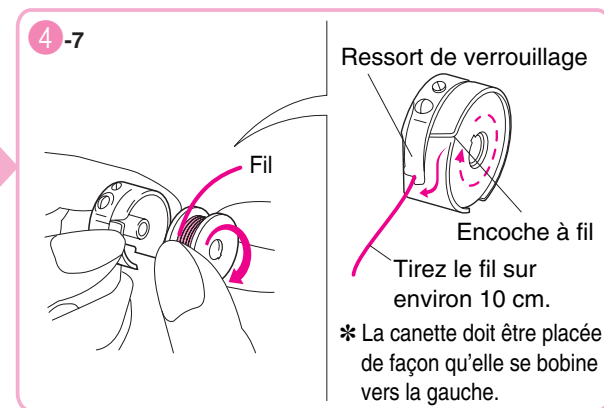
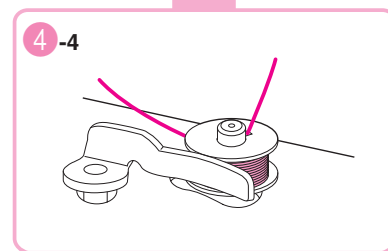
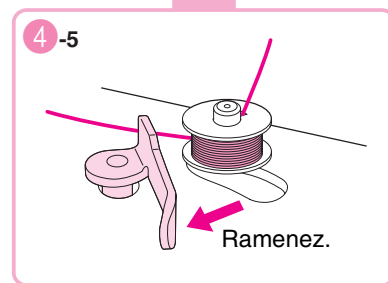
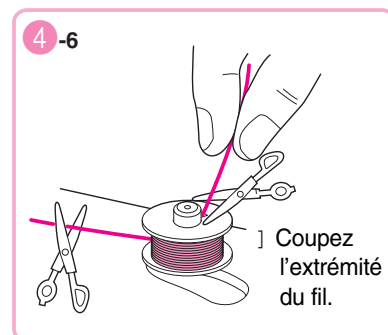
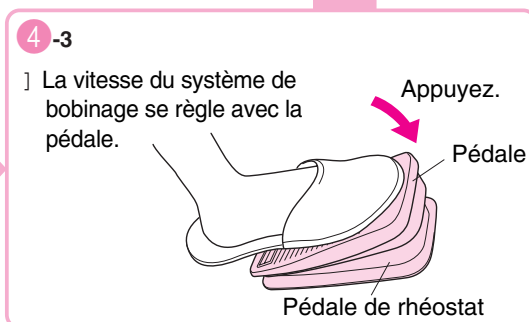
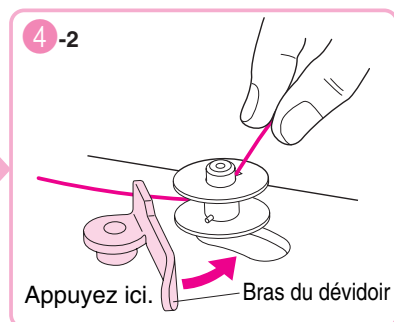
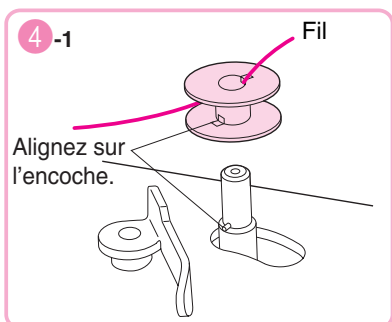
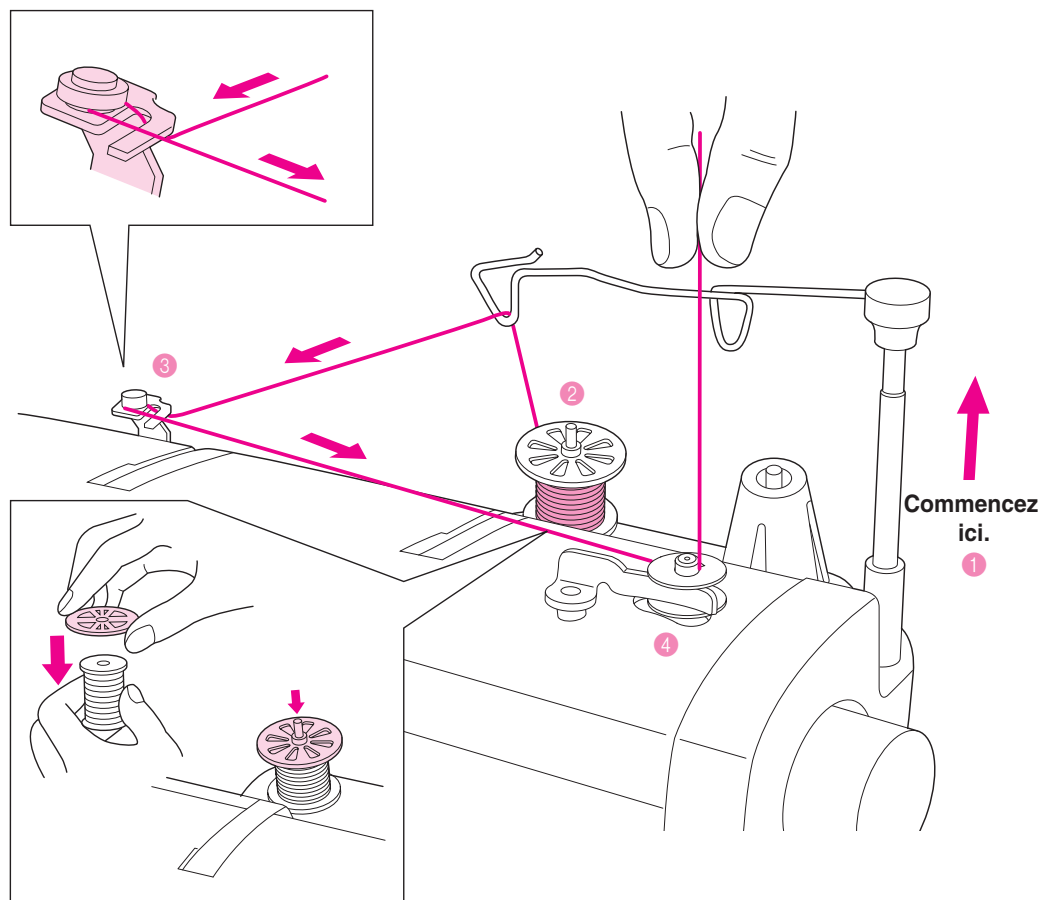
The following chart applies to many different fabric, thread and needle combinations.

	Fabric - Thread - Needles		
	Cloth	Thread	Needle (HLX5)
Special fabric	Velvet	Silk, Polyester #30 - #50	#11 - #14
	Quilt	Polyester #20 - #50	#11 - #16
	Synthetic Suede	Polyester #20 - #50	#11 - #16
	Knit	Polyester #20 - #50	#11 - #14
	Coating	Polyester #50	#11 - #14
Light weight fabrics	Lawn	Cotton #80	#9
	Tricot	Polyester #60	#9
	Silk Georgette	Silk #50	#11
Middle weight fabrics	Wool Georgette	Silk, Polyester #50	#11
	Gingham	Cotton #60 - #80	#11 - #14
Heavy weight fabrics	Lightweight Jersey	Polyester #60	#11
	Gabardine, Flannel	Silk #50	#11
	Denim	Cotton #20 - #50	#14 - #18
	Jersey	Polyester #20 - #50	#11 - #16
	Tweed	Silk #20 - #50	#11 - #16

Guide de référence rapide

1. Bobinage du fil de canette

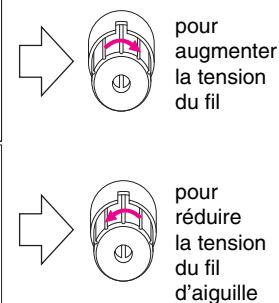
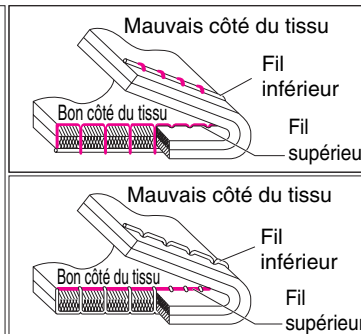
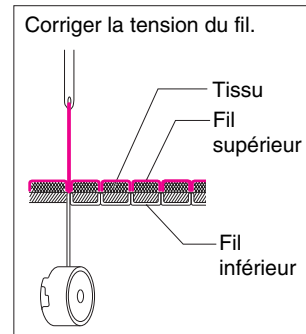
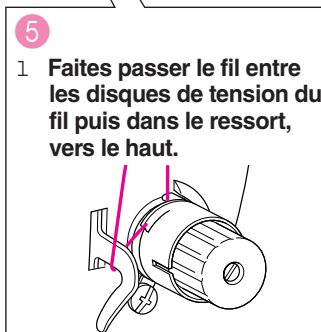
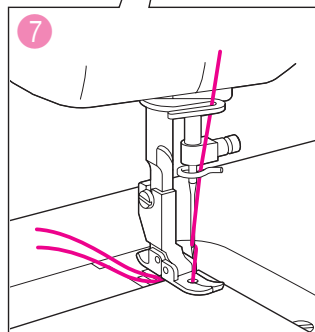
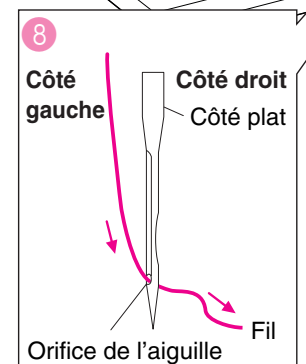
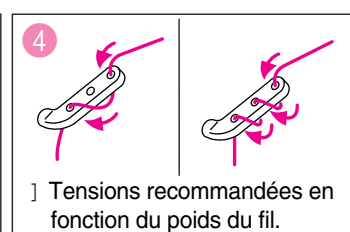
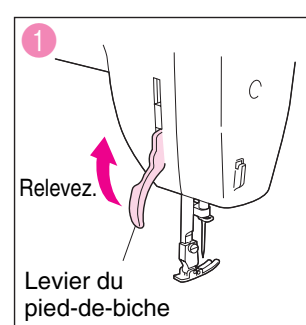
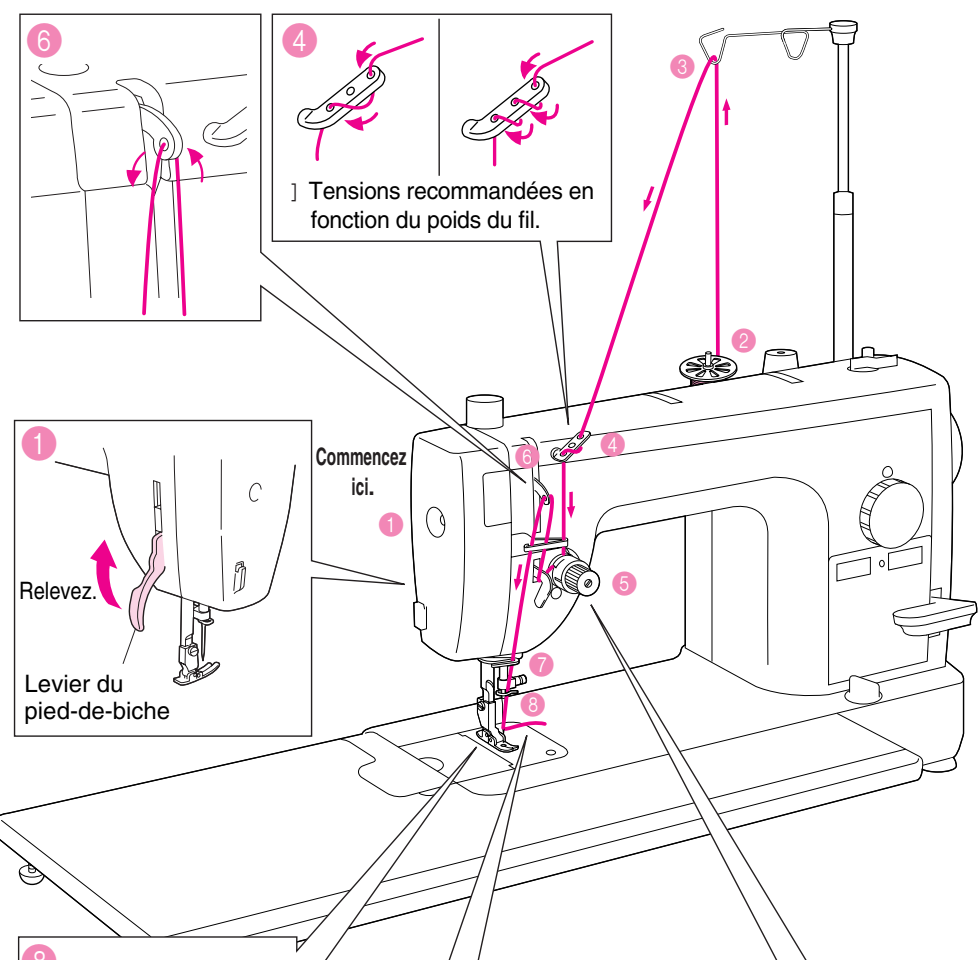
1 Commencez ici.1



2. Mise en place du fil supérieur

Tension des fils

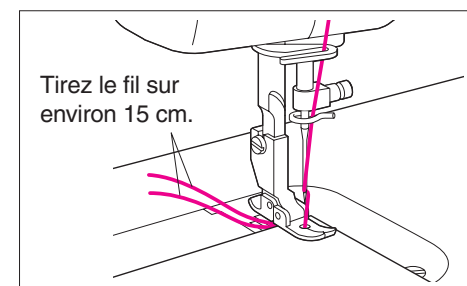
1 Régler le fil de canette en fonction de la tension du fil supérieur.



Une mauvaise tension des fils peut donner des résultats non souhaités comme des points supérieurs ou inférieurs irréguliers, des coutures francées ou provoquer la rupture des fils.

Points d'essai

1 Relevez l'aiguille, placez le tissu sous le pied presseur, abaissez le support et faites une couture d'essai.



1 Sélectionner l'aiguille qui convient pour le tissu et le fil

1 Le tableau ci-dessous concerne différentes combinaisons de tissus, de fils et d'aiguilles.

	Combinaisons tissu-fil-aiguille		
	Tissu	Fil	Aiguille (HLX5)
Tissu spécial	Velours	Soie, polyester #30 - #50	#11 - #14
	Matelassage	Polyester #20 - #50	#11 - #16
	Daim synthétique	Polyester #20 - #50	#11 - #16
	Jersey	Polyester #20 - #50	#11 - #14
	Revêtement	Polyester #50	#11 - #14
Tissu léger	Batiste	Coton #80	#9
	Tricot	Polyester #60	#9
	Soie Georgette	Soie #50	#11
Tissu moyen	Laine Georgette	Soie, polyester #50	#11
	Vichy	Coton #60 - #80	#11 - #14
	Tricot léger, jersey	Polyester #60	#11
Tissu lourd	Gabardine, flanelle	Soie #50	#11
	Jeans	Coton #20 - #50	#14 - #18
	Jersey	Polyester #20 - #50	#11 - #16
	Tweed	Soie #20 - #50	#11 - #16