



# LEARN & CREATE

with Baby Lock

## Baby Lock Cover Stitch Machine Accessory Feet and Attachments

This class covers the feet and attachments that are available for the Baby Lock Cover Stitch machine. You may have already watched Getting to Know Your Cover Stitch Machine where we talked about all of the threading options available for this machine, and that will be helpful with using the feet and attachments shown in this video. You will see how the different feet and attachments can be used in combination with the different threading options to create some really beautiful techniques. You really have the opportunity to increase your sewing skills and give a beautiful polished finish to any of your garments by using the feet and attachments that are available for the cover stitch machine.

### Table of Contents

<b>The Fabric Guide</b> .....	<b>1</b>
<b>Plain Hemmer</b> .....	<b>3</b>
<b>Single Downturn Feller</b> .....	<b>4</b>
<b>Double Fold Bias Binder</b> .....	<b>5</b>
<b>Single Fold Bias Binder</b> .....	<b>7</b>
<b>Knit Woven Double Fold Bias Binder</b> .....	<b>8</b>
<b>Belt Loop Folder</b> .....	<b>10</b>

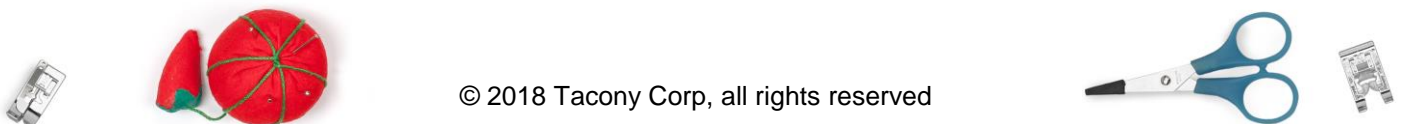
### The Fabric Guide

Part # BLE8FG

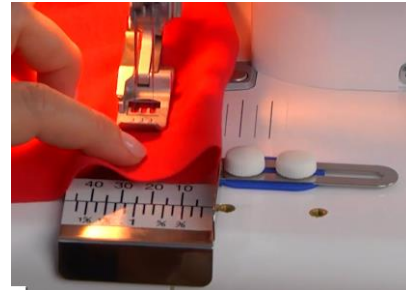
The fabric guide is a fantastic tool because it makes it easier for us to keep hem allowances straight.

1. When sewing hems, you can use any of your cover stitch settings.
2. In the video Sara used a Cover Stitch Wide
3. Press the hem up
4. As you stitch make sure that the needles straddle the raw edge at the top of the hem

There are a couple of ways you can keep the hem straight as you are stitching.



1. You can use the markings on the bed of your machine as a guide to keep the hem straight.
2. Or you can use the optional Fabric Guide attachment
3. To find the correct position
  - Turn the fabric over so the hem is facing up
  - Line up to top edge of the hem at the front of the presser foot
  - The notches on the presser foot match the position of the needles so it is easy to align the top of the hem with the needles
4. If you are using the marks on the bed of the machine you will be able to see which mark you would need to use
5. The Fabric Guide is even easier to use as a guide because it sits in front of both the foot and the needles, so the fabric can be guided straight as it goes under the foot
6. The blue adaptor goes between the Fabric Guide and the bed of the machine to prevent scratches on the machine
7. Use the attachment screws with the white heads that came with your machine to secure the Fabric Guide and adaptor in place
8. The Guide can be adjusted left or right to give you the perfect guide for any depth of hem
9. The fabric was positioned wrong side up while the guide was positioned so it was easy to see that the needles would straddle the raw edge at the top of the hem
10. Before you begin to sew the hem, turn the fabric over so the hem is on the bottom and you are stitching on the right side of the fabric
11. As you stitch, guide the fold at the bottom of the hem right along the Fabric Guide
12. As Sara stitched, she rested her fingers lightly on the fabric at the top of the hem.
  - That allowed her to feel the ridge at the top edge of the hem and know that the hem was lying flat
13. The finished hem has two rows of evenly spaced straight stitches on the right side of the garment and the cover hem loops encase the raw edge of the hem on the wrong side of the garment.



You can use the Fabric Guide with any of the stitches on your Cover Hem machine, so anytime a guide to help keep the stitching straight is desirable, this will be your go-to attachment.



## Plain Hemmer

Part # BLE8S7 (1/4")

Part # BLE8S6 (1/2")

Another option for creating hems on your Cover Stitch machine is the plain hemmer.

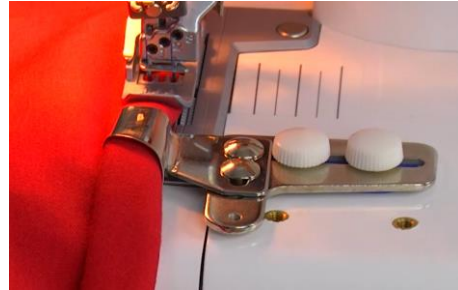
1. The optional Plain Hemmer also is attached to the bed of the Cover Stitch machine with the attachment screws with the white heads that came with your machine.
2. Start by attaching the hemmer loosely.
  - This will allow you to adjust the position of the hemmer before you tighten it down
3. The Plain Hemmer has two sets of screws that allow for perfect positioning
4. The attachment screws allow adjustment left to right
5. There are also two silver screws on the hemmer
6. Use the black handled screwdriver if you need to loosen or tighten those silver screws to adjust the position of the hemmer.
  - The silver screws are designed to allow you to move the attachment forward or back if needed
  - This attachment can also be used on the Baby Lock 8-thread machines, and different machines may have a foot that is slightly longer or shorter.
  - If you loosen the silver screws, you can move the foot forward or back to sit exactly where you need it with the foot on your machine.

Position the Plain Hemmer based on the stitch you are using.

1. Sara used a cover stitch wide in the video
2. She positioned the hemmer so the scroll that folds the fabric was lined up with the notches on the presser foot for the needles.
3. When the hemmer is in the correct position, tighten the attachment screws.
4. Prepare your fabric by pressing under about 1/2"
5. With the right side of the fabric facing down, slide the pressed fold into the open left side of the scroll on the hemmer
6. Follow the curve of the scroll with the fold of the fabric until the fold curls all the way to the top of the scroll
7. You will end up with a double folded hem.
8. Use a stiletto or an awl to guide the fabric out the back of the scroll on the hemmer and straight back under the presser foot until it reaches the needles.
9. Lower the presser foot
10. Take the first two or three stitches by turning the handwheel toward yourself.



11. Sergers sew fast and if you start out crooked, your whole hem may be off kilter
12. Taking a moment to hand turn and make sure everything is straight is a great way to prevent mistakes



The finished hem has two rows of evenly spaced straight stitches on the wrong side and the cover hem loops on the right side of the garment.

1. Sara used a contrast thread which creates a decorative trim on the hem
2. If you want a subtler look, you could use a matching thread
3. Sara also noticed that her hem stretched slightly.
4. If you see any stretching in your hem, it is easy to move the Differential Feed up a notch to keep the hem flat.

It is always a good idea to test your stitch before you hem the garment. Taking a moment to run a swatch of fabric allows you to check that the position of the hemmer is perfect and to check for any stretching that will require an adjustment to the Differential Feed lever.

## Single Downturn Feller

Part # BLE8S10 (1/4")

Part # BLE8S8 (5/8")

Part # BLE8S9 (1")

This is a better choice if you want the needle threads on the right side of the garment and the loops on the wrong side.

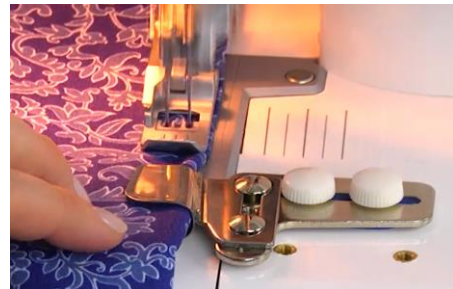
1. The Downturn Feller turns the fabric to the wrong side of the fabric and guides it under the foot.
2. The Downturn Feller is available in three different sizes.
  - 1/4" Downturn Feller
  - 5/8" Downturn Feller
  - 1" Downturn Feller
3. If you slide fabric into the 5/8" feller from the left side, the fabric is folded over to the wrong side.
4. If you turn the feller over, you will find that it has created a 5/8" hem.
  - So, the depth of the hem created depends on the size of the Feller.
5. The size Feller you have selected will also dictate the stitch you will need to use.



6. If you have selected the 1/4" Feller, you will need to use a chain stitch because a cover stitch would simply be too wide for the depth of the hem.
7. If you have selected the 5/8" Feller, either a narrow cover stitch or a chain stitch could be used.
8. If you are using the 1" Feller, any of your stitches including the wide cover hem could be used.

#### Setting up the Downturn Feller:

1. The blue adaptor goes between the Downturn Feller and the bed of the machine to prevent scratches on the machine
2. Use the attachment screws with the white heads that came with your machine to secure the Downturn Feller and adaptor in place
3. Like the Plain Hemmer, the Downturn Feller also has the silver screws that allow you to adjust the position of the attachment front to back if needed.
4. Before you tighten the white-headed attachment screws, make sure the scroll on the foot is lined up with the needle positions as shown by the notches on the front of the foot.
5. When the attachment is positioned, then tighten the screws.
6. Turn the handwheel toward yourself to cycle the needles up.
7. Lift the presser foot.
8. Slide the fabric into the scroll of the foot from the left so it turns under.
9. Use a stiletto or an awl to guide the fabric straight under the foot and back to the needles.
10. Lower the presser foot.
11. Hand turn the first two or three stitches to confirm that everything is lined up.
12. As you sew, make sure that the fabric stays in the scroll of the foot and continues to wrap around to the underside.
13. The finished hem has two rows of evenly spaced stitches on the right side of the fabric and the cover hem loops on the wrong side.



## Double Fold Bias Binder

Part # BLE8S3 (1 1/8")

Part # BLE8S2 (1 3/8")

The Double Fold Bias Binder takes a flat bias fabric, folds both raw edges toward the middle and then folds the whole thing in half.

1. This gives you an edge finish with no raw edges
2. And you have the flexibility of a bias-cut fabric.



3. The Double Fold Bias Binder is available in two sizes
  - 28mm
  - 36mm
4. The Bias Binders also attach to the bed of the machine, but it is easier to put the fabric into the binder before you attach it to the machine.
5. The fabric does need to be cut on the bias to be flexible enough to fold as it goes through the binder.
6. Insert the bias strip into the larger opening at the front of the attachment.
7. Use a stiletto, awl, or the points of small scissors to guide the fabric through the folder.
  - There is a handy slot in the wide part of the folder that makes it easy to move the fabric along.
8. Continue to guide the fabric through until it comes out the smaller end of the folder.
9. Once the fabric strip is in the folder, it is time to attach the binder to the bed of the machine.
10. The blue adaptor goes between the Bias Binder and the bed of the machine to prevent scratches on the machine
11. Use the attachment screws with the white heads that came with your machine to secure the binder and adaptor in place
12. Again, you will want to leave those screws loose until you have adjusted the position of the binder.

Sara changed to a chain stitch for the Bias Binder

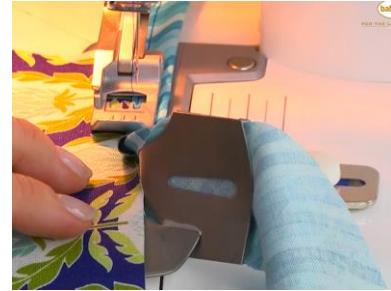
1. If you are set up for a wide cover stitch as Sara was, remove the left needle and its thread.
2. Lift the presser foot to make it easier to remove the needle thread
3. Adjust the chain needle tension
  - Tightening the chain needle tension means less thread is fed to the looper
  - It simply takes less thread to make the loop on the back of the chain stitch than it did to make loops that stretched all the way from the left needle to the right needle.
4. Use a stiletto or an awl to guide the binding fabric straight under the foot and back to the needles.
5. When the binding is under the presser foot, you will be able to see where the binder needs to be for the chain stitch to sew next to the fold of the fabric.
6. If you left the attachment screws loose, it is easy to move the binder left or right, so it lines up perfectly.
7. Hand turn two or three stitches to confirm that the needle is sewing next to the fold of the bias.





To sew the binding onto the edge of a flat piece of fabric:

1. Place the flat fabric right side up between the lips of the folder
2. You do not have to push or pull on the flat fabric
3. As you begin to sew it will naturally be pulled along with the bias.
4. Start slowly to see that everything is going as it should
5. The right side of the binding has one row of straight stitches and the wrong side of the binding has the chain loops.



You really do not need to hurry because you are folding and sewing bias in one step. Even if you sew slowly, this is going to be done quickly.

1. You can also create ties quickly by sewing bias strips without the flat fabric inserted.

## Single Fold Bias Binder

Part # BLE8S4 (28mm)

Part # BLE8S5 (40mm)

The Single Fold Bias Binder is similar to the Double Fold Bias Binder except that instead of folding both edges under it only folds the top edge. You will have an unfolded raw edge on the underside.

1. The Single Fold Bias Binder is available in two sizes
  - 28mm
  - 40mm
2. If you look at the scroll on the Single Fold Bias Binder you can see that the top edge of the fabric will be folded over while the bottom edge is in a slot that leaves it flat
3. Use either a cover stitch wide or a triple cover stitch with the single fold binder so the fabric raw edge will be covered by the cover stitch loops
4. Position the binder so that one needle sews just inside of the fold and the other needle sews just outside of the fold, so the raw edge will be encased by the looper thread.
5. It is easiest if you insert the bias strip into the binder before you attach the binder to the bed of the machine.
6. The binder is then attached to the bed of the machine with the blue adaptor and the attachment screws.
7. Sara used a cover stitch wide in the video
8. As you can see in the photo, the attachment was positioned so the right needle sews on the



- edge of the fold and the left needle sews on the single layer of fabric
9. Lower the foot and hand turn a couple of stitches to confirm that everything is sewing correctly
  10. Slide the flat fabric that will be bound into the opening between the fold and the flat fabric.
  11. Sew the binding
  12. There are two evenly spaced rows of straight stitches on the right side of the fabric
    - Sara used a thread the matched her fabric so the row of stitching that was not on the binding would blend and be less visible
  13. On the wrong side, the looper thread completely covered the raw edge of the binding

The Single Fold Bias Binder creates a bound edge with a lighter weight finish by using one less layer of fabric.

## Knit Woven Double Fold Bias Binder

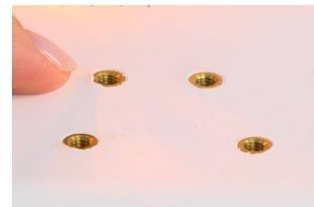
Part # BLCSDFB8 (8mm)

Part # BLCSDFB10 (10mm)

Part # BLCSDFB15 (15mm)

The Double Fold and Single Fold Bias Binders are designed to be used with woven fabrics, but this one can be used with either woven or knit fabrics.

1. Use bias cut strips for the binding if you are using woven fabrics because you will need the stretch of the bias.
2. If you are using a knit fabric for the binding, you can cut it on the straight of grain, just make sure you are cutting in the direction that stretches.
3. When you take the attachment out of the box, the fabric guide is folded back.
4. Open it up so the fabric guide extends to the front of the attachment
5. The Knit Woven Double Fold Bias Binder is available in three sizes.
  - 8mm
  - 10mm
  - 15mm
6. Attaching this binder is just slightly different
7. There are two sets of screw holes on the bed of the machine
  - One pair of screw holes is closer together
  - The other pair of screw holes is farther apart
8. Up to now, all the attachments Sara has demonstrated were attached using the holes that are closer together
9. The Knit Woven Double Fold Bias Binder will be attached to the bed of the machine using the screw holes that are farther apart.





- It is easy to tell which set of screw holes to use, because if you try to set this binder over the closer holes the binder would have to sit on top of the presser foot.
10. Use the same white-headed attachment screws that came with your machine to attach the binder
    - This binder does not need the blue adaptor
  11. It is easiest to feed the fabric into the binder before you attach it to the machine
  12. Feed the fabric into the wide end of the binder and use a stiletto or an awl to guide the fabric through the folder
  13. As the fabric emerges from the narrow end of the binder, weave the bias strip into the guide



14. The guide helps keep the fabric flat and straight as it feed into the binder
15. Next pull the fabric at the narrow end of the binder toward the back
16. The fabric will slide under a metal guide and be automatically folded with both raw edges folded to the middle and the binding folded to encase the raw edges.

#### To put the binder on the machine

1. Turn the hand wheel toward yourself to cycle the needles up
2. Lift the presser foot
3. Clear the threads out of the way to make it easier to slide the fabric under the needles
  - Pull a little slack in the needle threads
    - It is ok to do that with the presser foot up
  - Pull the threads to the back of the foot to clear the space under the needles
4. Put the attachment over the screw holes that are farther apart
5. Use the attachment screws to loosely fasten the binder to the bed of the machine
6. Note that this attachment sits to the right of the presser foot instead of in front of it like the previous binders.



7. Arrange the fabric so it is under the presser foot, straight, and lined up so both needles are going to land on the binding.
  - Sara says you may need to show the fabric who is boss!
  - Use tweezers, or a stiletto if needed to position the fabric
  - It helps to have enough fabric pulled through the binder, so you can hold it behind the foot as you manipulate it into position
8. Move the binder left or right as needed and then tighten the attachment screws

You do have several choices of stitches that can be used with this binder.

1. The cover stitch wide will work with the medium (10mm) or wide (15mm) binders
2. If you are using the narrow (8mm) binder, you would want to change to a narrower stitch.
3. Lower the presser foot
4. Hand turn a few stitches to make sure everything is straight and looking good
5. Place the flat fabric between the folds of the binding at the narrow end of the binder
6. It will be pulled in and stitched without any pushing or pulling on your part
7. Start slowly.
  - Sara realized after the first few stitches that she was not lined up perfectly
  - She stopped
  - Loosened the attachment screws
  - Re-positioned the binder
  - Tightened the screws
8. And when she started to sew again, the needles were sewing just where she wanted them
9. On the right side of the fabric there were two rows of evenly spaced straight stitches and both of those rows of stitching were on the binding.
10. On the wrong side of the binding, the cover stitch loops were centered on the binding

## Belt Loop Folder

Part # BLE8S12 (3/4")

Part # BLE8S11 (1 1/2")

The Belt Loop Folder works slightly differently from the binders in that it is not used to fold fabric around the edge of a flat fabric.

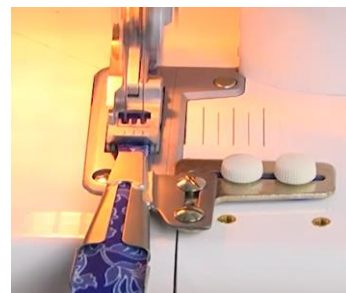
1. The Belt Loop Folder folds the raw edges of the fabric strip to the center and creates a finished belt loop
2. The Belt Loop Folder comes in two sizes



- $\frac{3}{4}$ "
  - $1 \frac{1}{2}$ "
3. Use a cover hem wide or a triple cover hem with the Belt Loop Folder
    - Those wide stitches ensure that the raw edges of the fabric on the wrong side of the belt loop are completely covered by the looper threads
  4. Feed the fabric into the Belt Loop Folder before you attach it to the bed of the machine
  5. Feed the fabric into the wide end of the binder and use a stiletto or an awl to guide the fabric through the folder
  6. Turn the folder over and check to see that the fabric is folding, and the raw edges are meeting in the center
  7. The Belt Loop Folder is attached to the bed of the machine using the screw holes that are closer together, the blue adaptor, and the attachment screws.
  8. Attach the screws loosely so the position of the binder can be adjusted.

#### Position the Belt Loop Folder:

1. Turn the hand wheel toward yourself to cycle the needles up
2. Lift the presser foot
3. Clear the threads out of the way to make it easier to slide the fabric under the needles
  - Pull a little slack in the needle threads
    - It is ok to do that with the presser foot up
  - Pull the threads to the back of the foot to clear the space under the needles
4. Guide the fabric from the small end of the folder so it goes under the presser foot and back and under the needles.
  - Use tweezers, or a stiletto if needed to position the fabric
  - It helps to have enough fabric pulled through the folder, so you can hold it behind the foot as you manipulate it into position
5. Lower the presser foot
  - Make sure that when the foot is lowered and flattens the fabric, that the fabric is still in the right position.
  - Sometimes when the foot is lowered, it shifts the fabric slightly
  - If the fabric is shifted, you may need to lift the foot and reposition the fabric
6. Move the folder left or right as needed and then tighten the attachment screws
7. Hand turn a couple of stitches to check that the fabric is feeding straight and that the needles are sewing in the correct position on the belt loop.



8. Note that you do not want to pull the fabric from the back of the attachment as you are sewing
  - It can be tempting to pull the last inch or so as you are getting ready to cut the belt loop free at the end
  - If you pull, it can stretch the fabric and the fold on one side may not be caught under the loops on the wrong side
9. The right side of the belt loop has two evenly spaced straight stitches
10. On the wrong side of the belt loop, the raw edges of the fabric are covered by the cover stitch loops.

All the attachments shown in this video are available from your local Authorized Baby Lock Retailer

