



Using the Belt Loop Binder Attachment on the Euphoria Featuring Chris Tryon

USING THE BELT LOOP BINDER ATTACHMENTS ON THE EUPHORIA

Instructional Video
Skill Level: Basic

Presented By:
Chris Tryon

baby lock
FOR THE LOVE OF SEWING

We are featuring two belt loop binder sizes available for the Euphoria.:

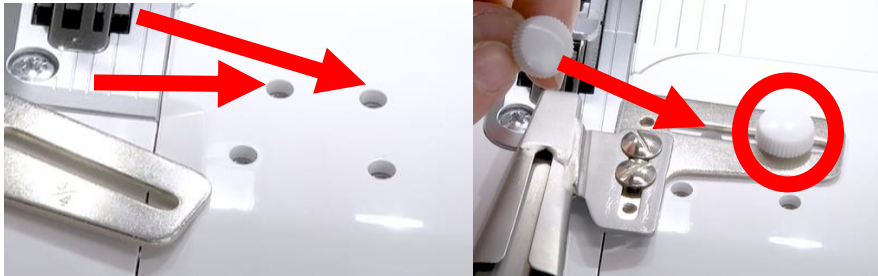
- Belt Loop Binder 3/4" Part # BLE8-S12
- Belt Loop Binder 1-1/2" Part # BLE8-S11
- 2 Stitches used:
 - Wide Cover Stitch or
 - Narrow Cover Stitch
- Needles – C2 & C3 needle position



FOR THE LOVE OF SEWING

Let us begin by attaching the 3/4" Belt Loop Binder – Belt Loop Strips

- Attach the binder to the bed of your machine using the [two white attachment screws](#)



Loosen these two screws a quarter or half turn, to move the attachment closer to your presser foot.

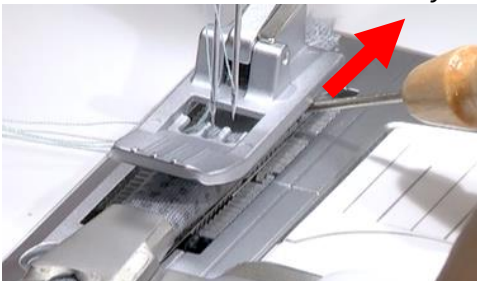


- Leave a small space between the toe of the binder and the presser foot.
- Tighten both screws down
- Adjust the white attachment screws to change the direction of your toe

We are working with a woven fabric first

TIP: cut woven fabrics on the bias – note that when you are cutting knits it does not make a difference unless you have a directional pattern.

- Starch woven fabrics before you cut your strips – this help feed the fabric as well
- Raise presser foot and feed fabric into the binder; using stiletto or tweezers, **pull fabric out from the back** of your foot



- Lower presser foot

TIP: Always practice first with the same fabric used in your project to check your alignment – watch where your needle thread sits

- Two needle threads should be centered over fabric



FOR THE LOVE OF SEWING

- Back threads should have caught the fabric edge on the back side
- Guide fabric through the attachment using light hands
 - What width should you cut your strips?
Read the guidelines that came with your attachment – do testing on your fabric and adjust as needed
- If you starch your fabric, be sure to starch fabric **before** you cut your bias strips

Sewing on Knits - Create Belt Loops

- Stitch length set to 4
- Standard Presser foot
- TIP: a Teflon foot is a great tool to use when stitching knits
- Don't need to cut knits with 4 way stretch, on the bias
- Release needle threads - turn flywheel to raise needles up and raise presser foot
- Using tweezers pull fabric past your presser foot
- Lower presser foot
- Stitch your practice stitch and adjust guide position as needed
- Finish stitching test stitch keeping your finger gently pushed down at the front of your attachment – not allowing fabric to bunch or pucker as it enters the attachment

Stitching on Woven Knit using 3/8" elastic – Create an elastic strap

- Separate needle and chain looper threads by taking needles to down position, then to the highest position
- Set stitch length to 4
- Starch your fabric prior to cutting
- Cut fabric strip a little wider than suggested
 - Adding elastic will push fabric out not allowing it to fold properly
- Feed fabric into the attachment
- Raise the presser foot and pull fabric to the back of the foot
- Lower presser foot
- Test Stitch a few stitches
- Raise your knit fabric strip up and slide your elastic on the bed of the machine and slide to the toe of the attachment and under the front of the foot.
- A stiletto is an especially useful tool for moving fabric in tight spaces



FOR THE LOVE OF SEWING



- Test Stitch to catch the elastic
- TIP: Guide elastic straight and keep tension even or this could cause elastic to move and miss stitches
- Test until you feel confident with the results

1 ½” Belt Loop Binder - Woven Cotton Fabric - Sundress straps or tote bag

- Change your needle positions to C1 & C3 - CoverStitch wide stitch for wider fabric strips
- Attach Teflon foot
 - The attachment may use just one white attachment screw however make sure to tighten down securely
- Woven fabric
- Bias cut strip
- Starch fabric before cutting on bias
- Test stitch your strip and adjust the attachment as needed depending on where your stitch lands on the back of the fabric

TIP: Always have test fabric strips of your project available to test the alignment and move the attachment as necessary – after adjusting your attachment you might lift your presser foot to realign the fabric under your foot as well

1½” Belt Loop Binder - Knit Fabric – Perfect for Belt loops

- Release chain looper thread and needle thread
- Slide knit fabric through the binder and under the presser foot using a stiletto or similar tool



- Begin stitching
- Adjust the guide as needed by first raising needles
- The stitch length set at 4 is a great stitch length for this application



FOR THE LOVE OF SEWING

- Keep the strip stable by holding fabric steady as it feeds into the attachment

½” Belt Loop Binder - Cork Fabric – Home Dec, garments, craft projects


- Needles – C1 & C3 position
- Teflon Foot
- Stitch length at 4
- Lighten the foot pressure
- Stitch slower on cork because it’s stiffer material
- Adjust the guide so stitching is in the middle, allowing the needles to grab both sides of the fold
- This would make a great loop for handbags and key fobs. Also, as an embellishment on a moto jacket for example
- For more videos on sewing with cork, check this video as well, on the Baby Lock SEWED site.



Thank you watching and we hope you enjoyed this class! Our goal is to inspire you and enhance your sewing knowledge! Check out additional SEWED online classes and of course, we hope you visit [Baby Lock - For the Love of Sewing](#)

Additional Resource Links:

For more creative video tutorials like this, check out and subscribe to the [Baby Lock YouTube channel](#)

And check us out on 



FOR THE LOVE OF SEWING