



Getting to Know:

Audrey

A-LINE SERIES
Model BL67



FOR THE LOVE OF SEWING

Baby Lock Consumer Helpline: 800-313-4110
www.babylock.com

Audrey

A-LINE SERIES Model BL67

No matter where you love to sew, Audrey is the free-spirited friend you'll want by your side. At just 12.8 lbs., this lightweight machine can easily travel or attend classes with you. Don't worry, Audrey has packed plenty of features for the road, like 66 built-in stitches, push button features, a drop-in bobbin and plenty of accessories.

This Getting to Know Guide will take you through a simple, step-by-step process on how to wind your bobbin, thread the machine, set stitches and more. Once you're familiar with your machine, refer to the instructions and reference guide (packaged with your machine) for additional directions.

Like all machines in the A-Line Series, Audrey has the features and the durability to handle all of your projects – you can always count on her to be there for you. Be sure to ask your Baby Lock Retailer about Audrey's friends in the A-Line, like Lauren, Natalie, Maria and Grace. From classic tailored looks to modern-day fashions, the machines in the A-Line Series will help you sew and serge with success – all with the quality you've come to expect from Baby Lock.



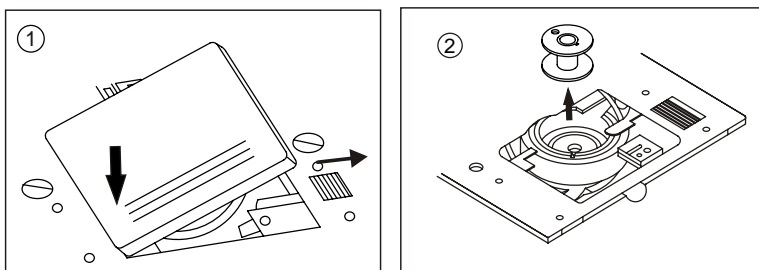
FOR THE LOVE OF SEWING



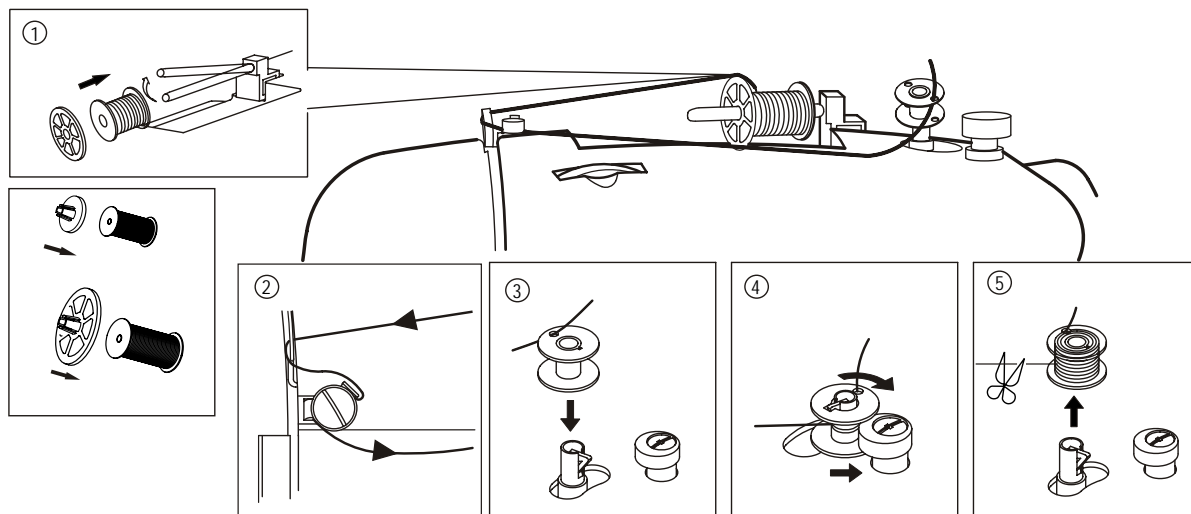
Winding the Bobbin

REMOVING THE BOBBIN

- 1 Remove the bobbin cover by sliding the release lever to the right and push down the left corner of bobbin cover at the same time.
2. Remove the bobbin from the machine.



WINDING THE BOBBIN

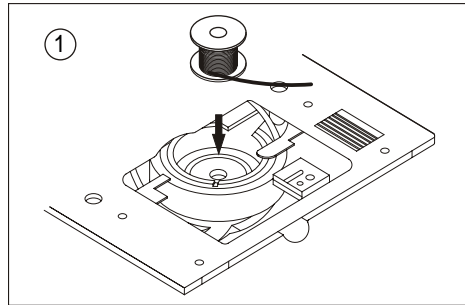


1. Raise the presser foot lever. Pivot spool pin into highest position. Place a spool of thread on the spool pin. Secure it with the spool cap to ensure smooth flow of thread. Use a spool cap closest in size to the spool of thread being used.
2. Pass thread from the spool through the thread guides as shown.
3. Pull the end of thread through hole in bobbin as shown.
4. Move bobbin winder shaft to the left. Place bobbin onto shaft until it clicks into position with the end of thread coming from top of bobbin. Push bobbin winder shaft to the right until it clicks. Hold onto the end of thread.
5. Start machine to wind the bobbin. Stop machine after a few turns to trim the thread tail with scissors. Bobbin will stop turning when completely filled. Cut the thread and push shaft to the left to remove bobbin.

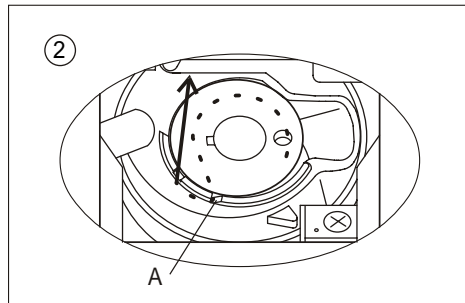


Inserting the Bobbin

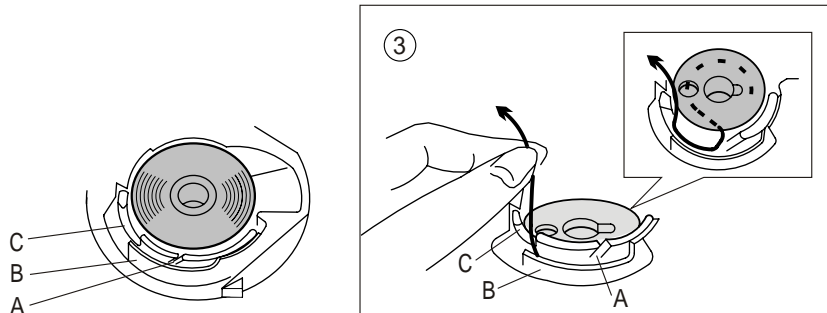
1. Place the bobbin into the bobbin holder with the thread unwinding counterclockwise.



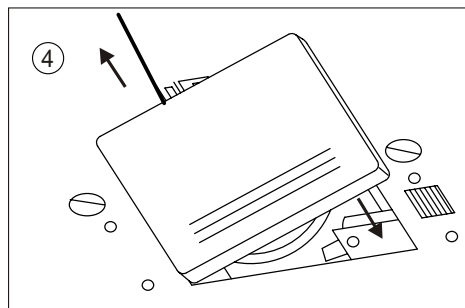
2. Draw the thread into notch (A).



3. Pull the thread toward the left and along the inside of spring (B) until it slips into notch (C) being sure that thread does not slip out of notch (A).



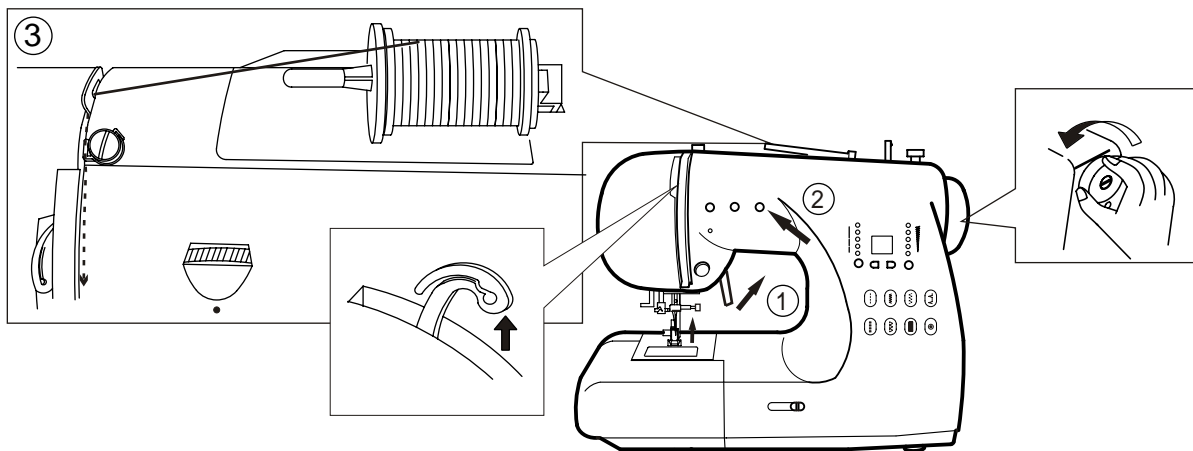
4. Pull thread out about 10 inches and replace the bobbin cover by inserting the left side and lowering the right side until it snaps into position.



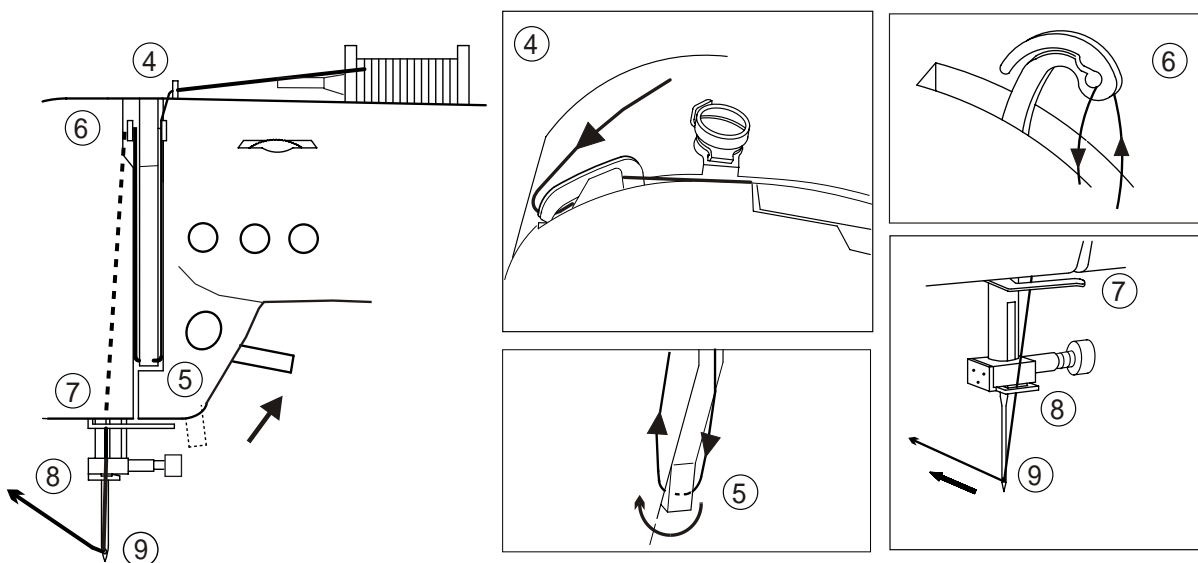


Threading the Machine

THREADING THE UPPER THREAD



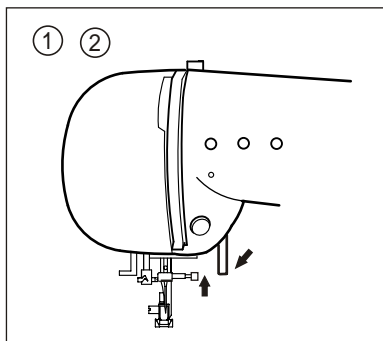
1. Raise the presser foot lever.
2. Press the needle up / down button or rotate the handwheel toward you to raise the needle in the up position.
3. Place a spool of thread onto the spool pin and secure with the proper size spool cap.
4. Pass the thread into the thread guide for upper threading and snap forward between the thread guide and guide plate.
5. Bring thread forward down the right channel, then to the left and up the left channel.
6. Pull the thread through and into the take-up lever from left to right.
7. Pass the thread down the left channel and into the thread guide at the base of the face cover.
8. Pass the thread from right to left into the thread guide on the needle clamp.
9. Thread the needle from front to back or follow directions for needle threader on next page.



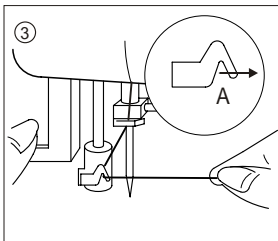


Using the Needle Threader

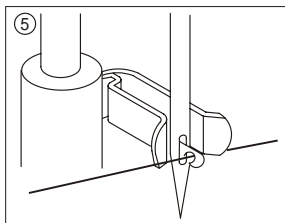
1. Lower the presser foot.
2. Set needle in up position.



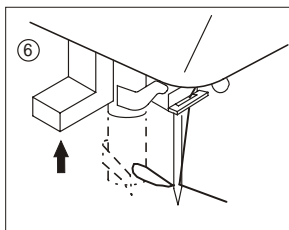
3. Lower the threader slowly and draw thread through thread guide (A) and pull toward the right.



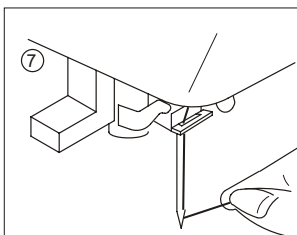
4. Lower the lever as far as it will go. The threader will turn and the hook pin will go through the needle eye.
5. Position thread below the needle eye and under the hook pin.



6. Hold thread loosely and slowly return lever to original position. Hook will turn and pass thread through needle eye while making a loop of thread.



7. Raise presser foot and pull thread out about 10 inches from needle eye.



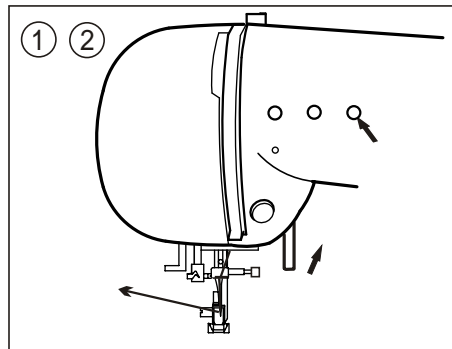
Note: The needle threader can only be used for needle sizes 11, 14 and 16.



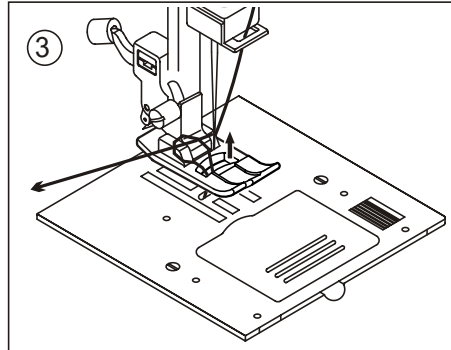
Raising the Lower Thread

DRAWING UP THE BOBBIN THREAD

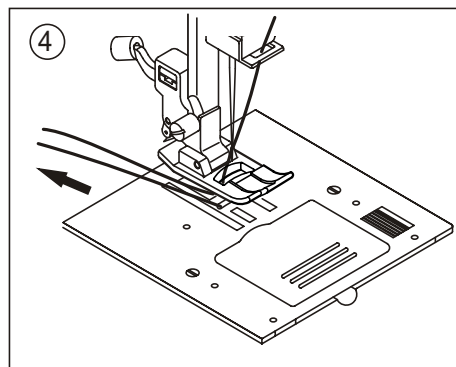
1. Raise the presser foot.
2. Hold the upper thread loosely and press needle up/down button, which is the first button on the right. The handwheel will turn one complete turn once you push this button.



3. Pull upper thread lightly. Bobbin thread will come up in a loop.



4. Pull both upper and bobbin threads about 10 inches toward the back and under the presser foot.

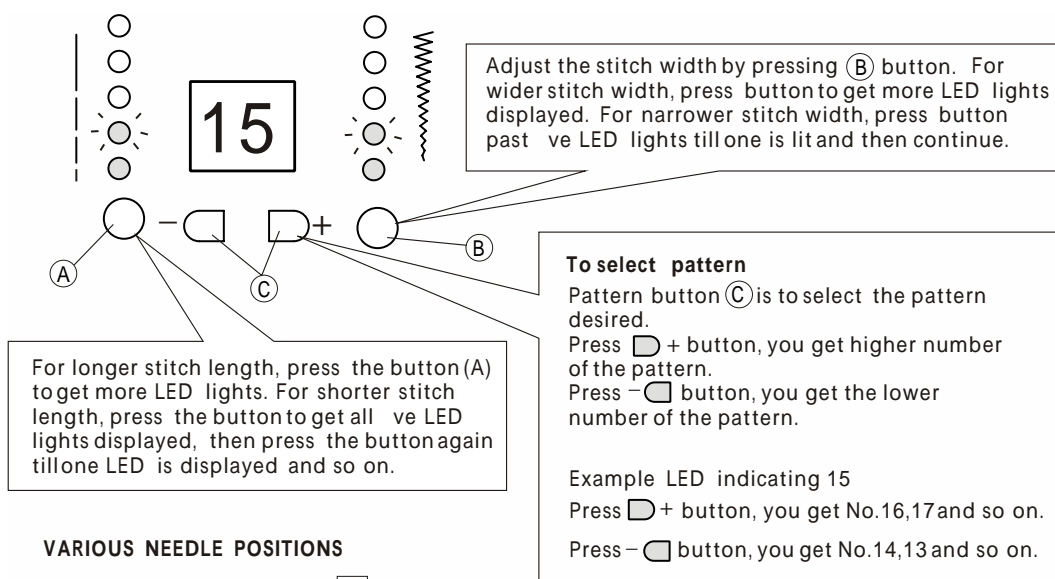




Selecting the Stitch

SETTING THE STITCH WIDTH AND STITCH LENGTH

Preset stitch length and stitch width are indicated by the number of LED lights. The longer or wider the stitch length/stitch width is, more of the LED lights are on. Some stitches have a blinking light which indicates the setting between two LED lights.



VARIOUS NEEDLE POSITIONS

When straight stitch pattern 01 has been selected, stitch width button (B) may be used to adjust the needle position.

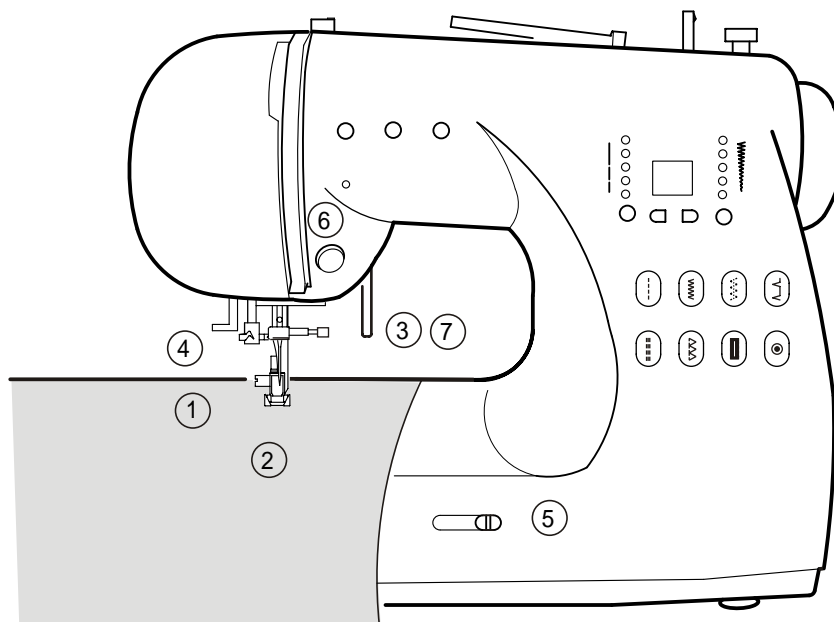
01. STRAIGHT STITCH
02. LEFT POSITION, STRAIGHT STITCH
03. QUILT STITCH, LIKE HAND SEWN
04. TRIPLE STRAIGHT STITCH
05. STEM STITCH FOR STRETCH FABRICS
06. ZIG ZAG STITCHING
- 07-14. BUTTONHOLES
15. 3-STEP ZIG ZAG
16. SATIN STITCH
17. RICK-RACK
18. OVERLOCK
19. DOUBLE OVERLOOK
20. SHELL
21. BLIND HEM
22. STRETCH BLIND HEM
23. DOUBLE ACTION
24. BRIDGING
25. FEATHER
26. FEATHER
- 27-66. DECORATIVE AND FUNCTIONAL STITCHES

01	02	03	04	05	06	07	08	09	10	11
12	13	14	15	16	17	18	19	20	21	22
23	24	25	26	27	28	29	30	31	32	33
34	35	36	37	38	39	40	41	42	43	44
45	46	47	48	49	50	51	52	53	54	55
56	57	58	59	60	61	62	63	64	65	66

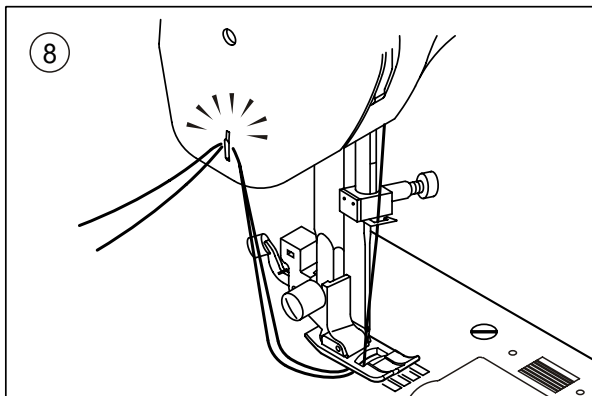


Starting to Sew

The machine will be set at 01 automatically to sew straight stitches when the power switch is turned on.



1. Raise the presser foot.
2. Place the fabric under the presser foot.
3. Lower the presser foot.
4. Hold both threads to the back when starting to sew. Let the threads go after sewing a few stitches.
5. While sewing, regulate the speed with the sliding speed control lever or foot control.
6. Stop the machine when you reach the end of the seam.
7. Raise the presser foot lever.
8. When you have reached the end of a seam, stop sewing and turn the handwheel toward you to bring the needle to highest position. Raise the presser foot and pull the fabric out from under the foot to the back of the machine. Cut the threads in the thread cutter on the left side of the machine.

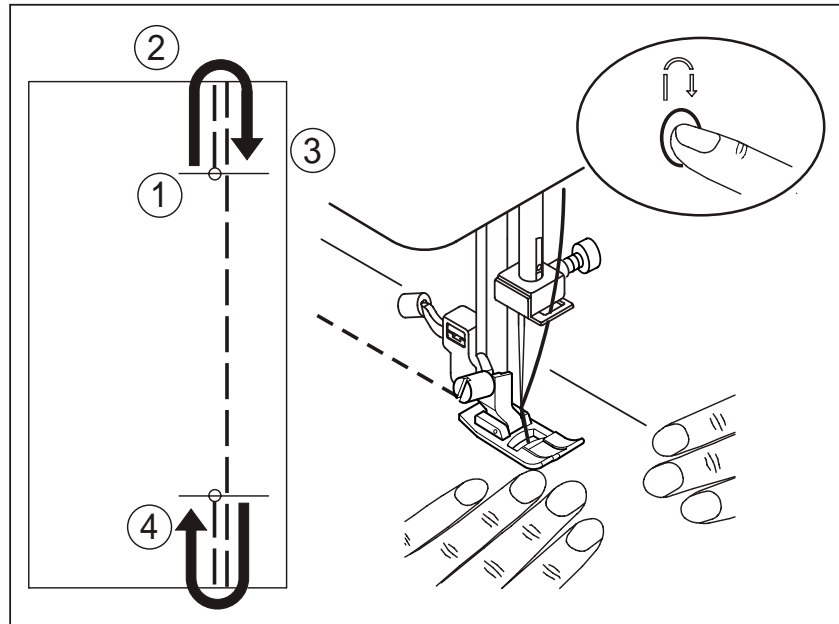




Starting to Sew

REVERSE STITCHING

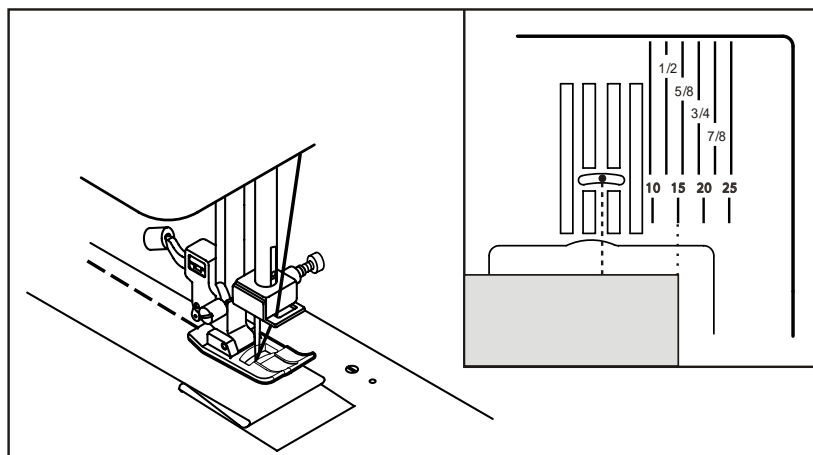
Reverse stitching is used for reinforcing the ends of the seams.



1. Place the fabric in position where back stitching is to be made and lower the presser foot.
2. Press reverse stitch button and sew 4-5 stitches. (If using the foot control, press pedal while pressing reverse stitch button.)
3. Press start button and resume sewing. (If using the foot control, release reverse stitch button and press the foot control to sew forward.)
4. When you reach the end of the seam, press the reverse stitch button and sew 4-5 reverse stitches.

SEAMING GUIDE ON THE STITCH PLATE

The figure on each guide line on the stitch plate indicates the distance between this guide line and the center needle position. Guide the fabric along the specific guide line in order to get the desired seam allowance between the stitching and the edge of the fabric.





Audrey's Wall Organizer

Are you looking for a creative way to store your sewing tools or office supplies? This wall organizer is simple, fun and easy to travel with, just like Audrey!

Skill Level: Beginner

Supplies:

- Baby Lock Audrey Sewing Machine
- 3/4 yard cotton print fabric for background
- 1-1/8 yard canvas for backing and pockets
- All purpose thread to match fabrics
- Contrasting color sewing thread
- 2 packages medium rick rack
- 2 packages extra wide double fold bias tape
- Scissors
- Pins
- Ruler
- Water erase marking pen

6. Change threads to the matching all purpose thread.
7. Encase the top edge of the pocket strip (37" length) with the bias tape. Using a straight stitch, sew 1/8" from the edge of the bias tape securing it to the top edge of the pocket strip. Repeat for the other pocket strip.
8. Stitch the rick rack to each pocket strip, using the previous stitching as a guide. Make sure you do not cover up the bias tape entirely.
9. Divide the pocket into three equal sections marking these sections using a pin.

Instructions:

1. Cut: one piece 23" x 23" from the cotton print and the canvas, two pocket pieces 37" x 7".
2. Using the ruler and marking pen, draw evenly spaced diagonal lines across the pocket pieces.
3. Thread the machine with the contrasting thread in the needle and all purpose thread in the bobbin.
4. Sew chosen decorative stitches along each marked line.
5. Repeat this for the other pocket piece.





Audrey's Wall Organizer Continued

10. Lay the pocket piece over the 23" background square for measurement reference. On the pocket piece, at each division, you will make a pleat on each side that has a 1" depth.
11. To make the pleats, measure 1" from the end of the two pocket pieces; fold a pleat that measures 1" deep. Your pocket piece should now be pleated and align with the width of the background piece. If it does not, adjust the pleats evenly until the strip equals the width of the background fabric. Pin the pleats for a temporary hold until you can baste the pleats.
12. Using a long stitch length baste the lower edge of the pocket strips to hold the pleats in place. Do not baste the pocket sections to the background fabric.
13. On the upper pocket section. Encase lower edge of the pleated pocket piece with bias tape and stitch to secure it.
14. Pin the lower pocket onto the background panel, matching the bottom and side edges.
15. Align the bottom edge of the top pocket section 2" above the top of the lower pocket section.
16. Stitch to secure it to the background piece.
17. Cut four strips of rick rack 18" to 20" long for the ties.
18. Position two pieces of rick rack on each side of the top edge even spaced. Baste the raw edges in place.
19. Lay the background piece on a work surface with pockets facing up. Layer the backing canvas piece right side down. Align and pin the corners.
20. Stitch around the outer edge leaving a small 4" opening on one side to turn the organizer.
21. Turn the organizer right side out and press the seams. Topstitch the opening closed.
22. Pull the pocket pleats open and sew down the center of each pleat to attach it to the background pieces.
23. To hang, tie the rick rack on nails or hooks. To roll and store, wrap the rick rack pieces around the organizer and tie to secure.



FOR THE LOVE OF SEWING

For other exciting projects like this one, visit www.totallystitchin.net and www.babylock.com