

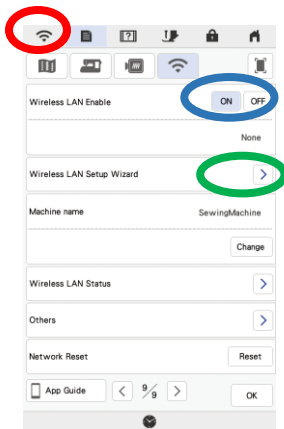
IQ Intuition Monitoring App Instructions for Baby Lock



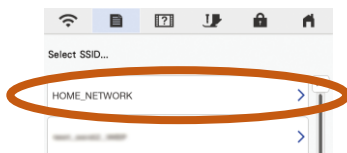
FOR THE LOVE OF SEWING

Enabling a Wireless Network Connection on Your Baby Lock Machine

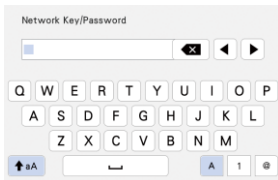
To connect your machine to a wireless network, the security information (SSID and network key) for your home network will be required. The network key may also be called a password, security key or encryption key. Make note of your security information and follow the steps below



1. Press **Wireless LAN** key at the top of the screen.
2. Set **Wireless LAN Enable** to ON.
3. Press **Wireless LAN Setup Wizard**.



4. Select the **desired network below Select SSID**.



5. Specify settings for SSID and Password, and then press OK. This completes the connection.



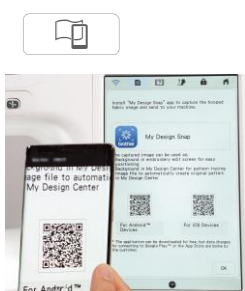
System Requirements for Intuition Monitoring App on a mobile device

To be able to install and use the App, smart devices must meet the following minimum requirements:

- Operating System: Android 5.0 or later / iOS 10.0 or later
- Camera resolution: 5MP or higher

Installing the App

To install the app using your Baby Lock machine or this guide, you will need to have a QR Reader app installed. Otherwise, search for the app called **“IQ Intuition Monitoring”** (in App Store for iOS or in Play Store for Android)



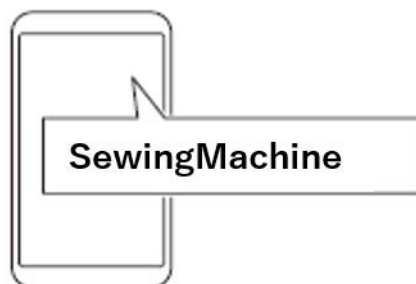
Press the smart device key in the upper-right corner of the machine's screen. When the IQ Intuition Monitoring icon and QR codes appear, scan the QR code for your smart device (Android or iOS). You can also scan the codes in the insert instructions packed with your machine.

Connecting the App to Your Baby Lock Machine

You will need to check your smart device's WLAN settings to ensure that it is connected to the same network as your Baby Lock machine. Before opening the app on your smart device, be sure to turn on your Baby Lock machine and enable the wireless LAN. The first time you open the IQ Intuition Monitoring app, the app will search for and then pair with your Baby Lock machine. The next time you use the app with your machine, the app will usually pair with your machine automatically. If it does not connect automatically, repeat the connection process.



1

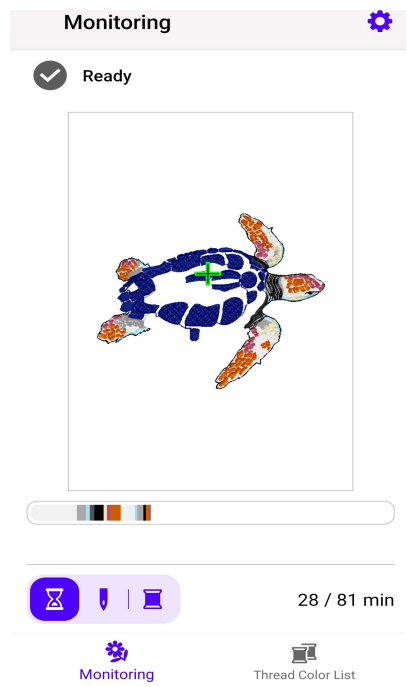


2

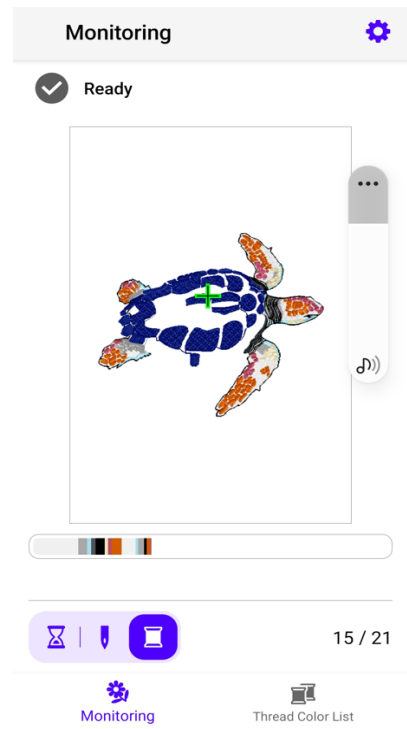
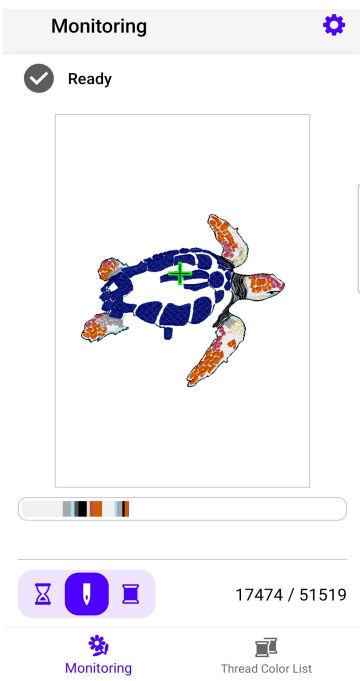
1. After IQ Intuition Monitoring is installed on the smart device, tap its icon to start it.
2. Select your machine in the Select Device screen. For this example, the name appears as “SewingMachine”, but this can be changed in your machine's settings.

There are three monitoring functions available within this app:

On this screen you can monitor your design by stitching time.

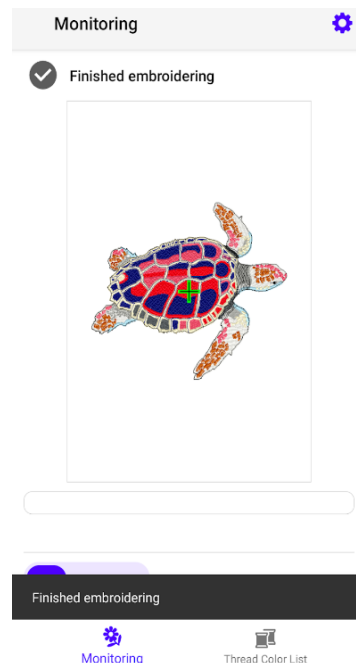


On this screen you can monitor your design by number of stitches.



On this screen you can monitor your design by thread color changes.

You will also receive notifications when the machine needs attention and when the design is finished stitching.



Viewing Instructional Videos

Depending on your model, there may be instructional videos installed on your Baby Lock machine which demonstrate the app's functions.

This image shows a blank sheet of white paper with horizontal ruling lines. The lines are evenly spaced and run across the width of the page. There is no handwriting or other markings on the paper.

