

*Meridian*TM

Quick Reference Guide

Guide de référence rapide

Model BLMA



baby lock

FOR THE LOVE OF SEWING

To register your machine warranty and receive Baby Lock product updates and offers, go to babylock.com/login. If you have questions about registration, visit your Authorized Baby Lock Retailer.

Baby Lock Consumer Helpline: 800-313-4110

www.BabyLock.com

Contents

- 2 Winding the Bobbin
- 5 Setting the Bobbin
- 6 Upper Threading
- 7 Preparing to Embroider

Contenido

- 2 Devanado de la bobina
- 5 Colocación de la bobina
- 6 Hilo superior
- 7 Preparativos para bordar

Table des matières

- 2 Bobinage de la canette
- 5 Mise en place de la canette
- 6 Enfilage supérieur
- 7 Préparation de la broderie

Winding the Bobbin

Devanado de la bobina

Bobinage de la canette

Follow the numbered steps below in order. Refer to the Instruction and Reference Guide for detailed instruction.

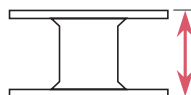
Realice los siguientes pasos numerados en el orden indicado. Para obtener instrucciones detalladas, consulte el guía de referencia y de instrucciones.

Suivez les étapes numérotées ci-dessous dans l'ordre. Consultez le guide d'instructions et de référence pour des procédures détaillées.

Use only the enclosed bobbin or bobbins of the same type. Bobbin included with the machine is Class 15 type bobbin.

Utilice sólo la bobina incluida o bobinas del mismo tipo. La bobina incluida con la máquina es de Clase 15.

N'utilisez que la canette fournie ou des canettes du même type. La canette fournie avec la machine est de type Classe 15.



11.5 mm (approx. 7/16 inch)
11,5 mm (aprox. 7/16 pulg.)
11,5 mm (env. 7/16 po)



Using the Supplemental Spool Pin

You can wind the bobbin during embroidery.



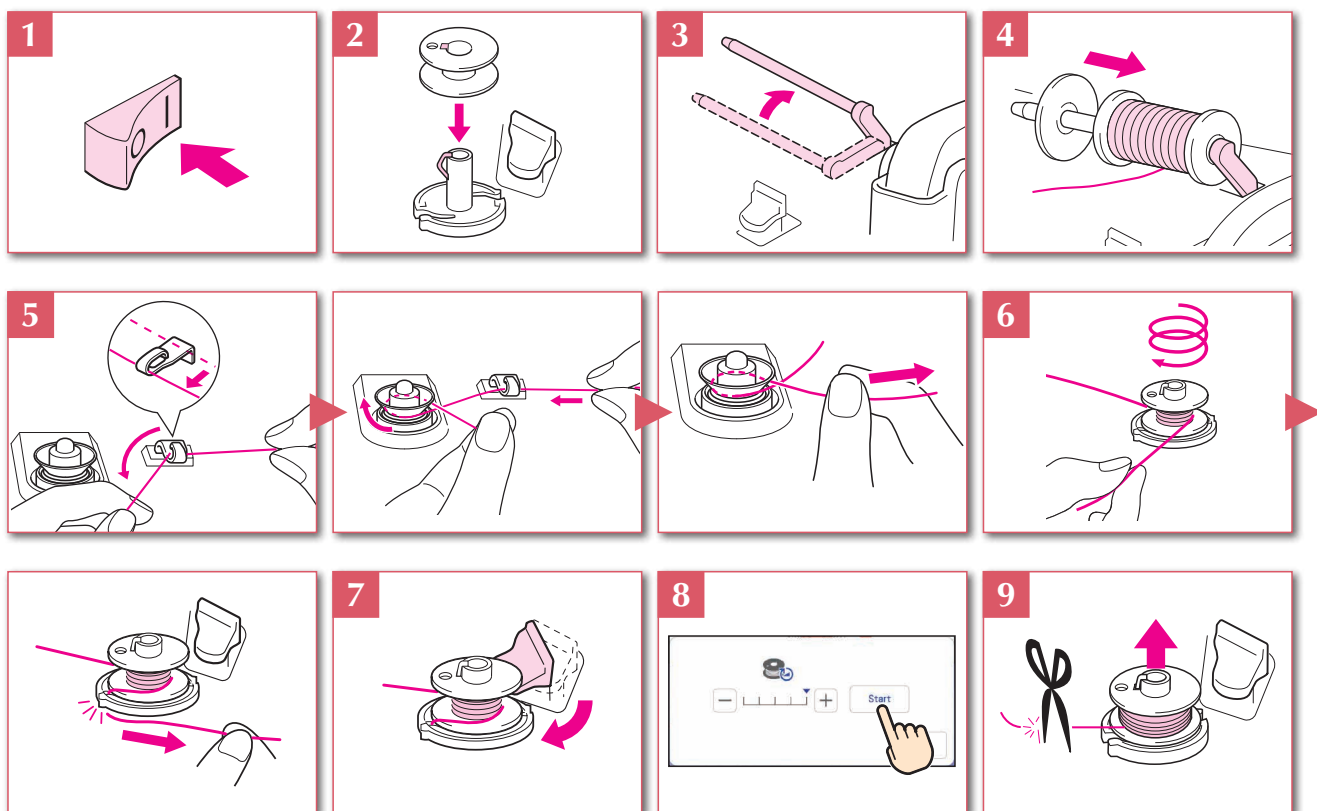
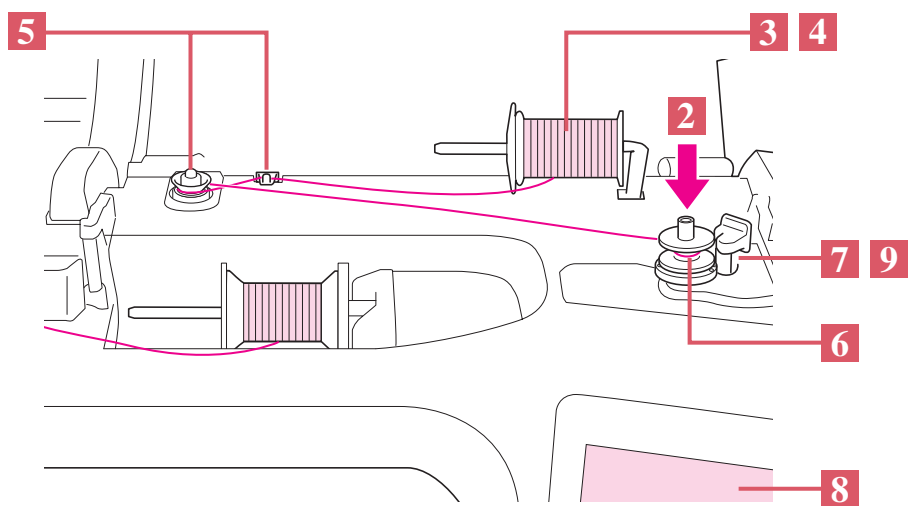
Uso del portacarrete suplementario

Puede devanar la bobina mientras está bordando.



Utilisation du porte-bobine supplémentaire

Vous pouvez bobiner la canette pendant la broderie.



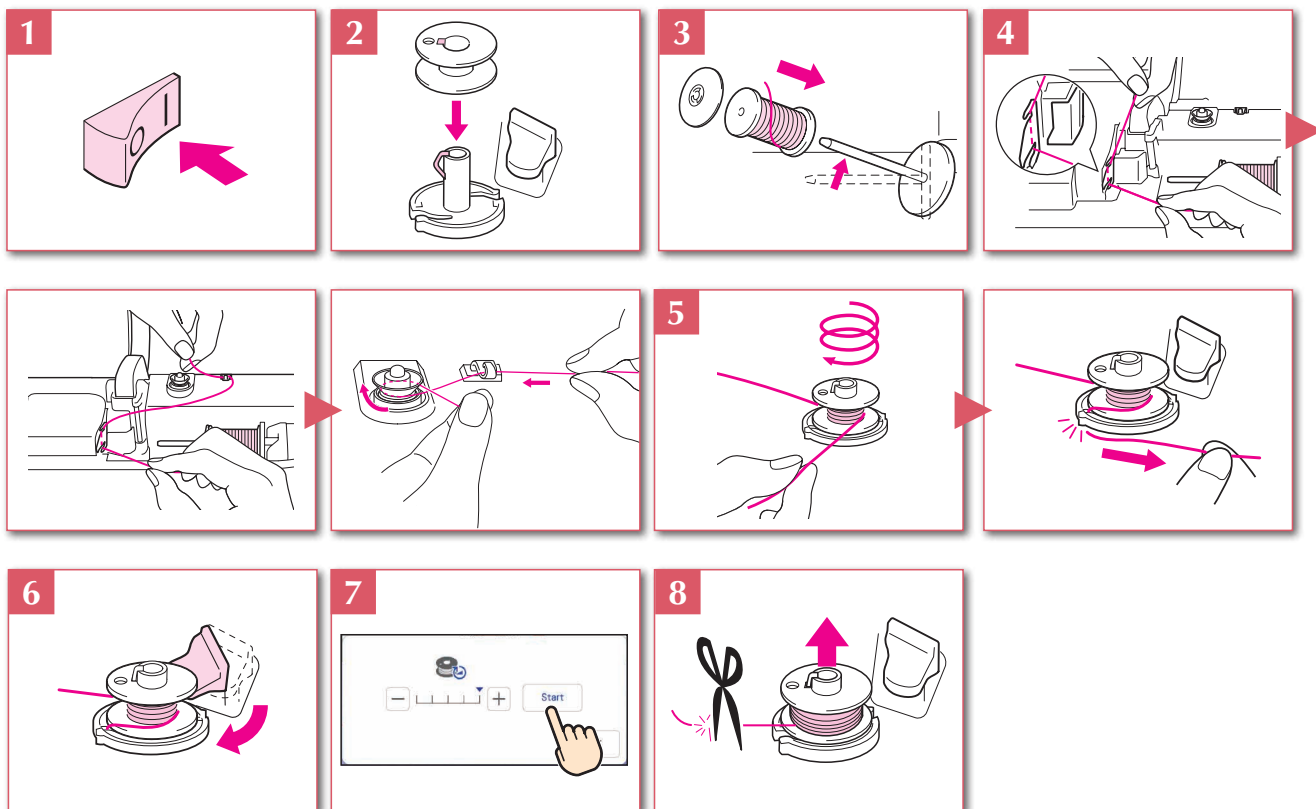
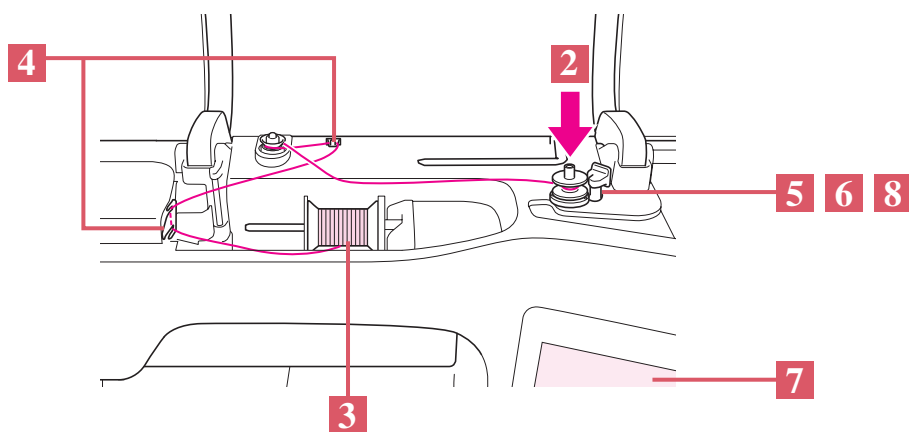


Winding the Bobbin Devanado de la bobina Bobinage de la canette

Using the Spool Pin
You can use the main spool pin to wind the bobbin before embroidering.

Uso del portacarrete
Se puede utilizar el portacarrete principal para devanar la bobina antes de bordar.

Utilisation du porte-bobine
Vous pouvez bobiner la canette avant de broder à l'aide du porte-bobine principal.



Setting the Bobbin

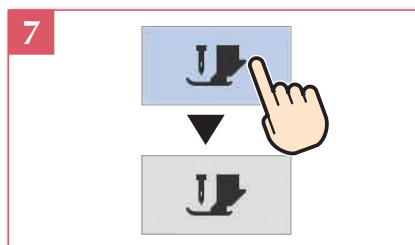
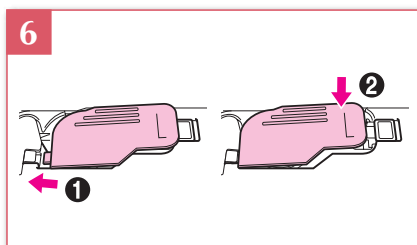
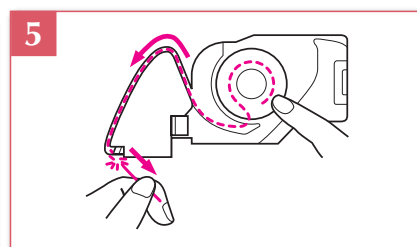
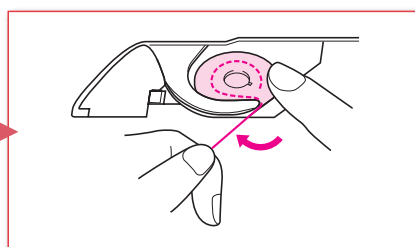
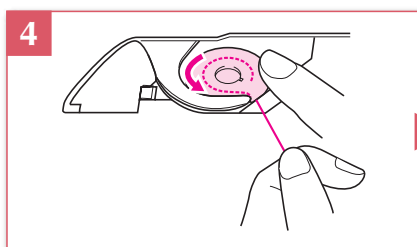
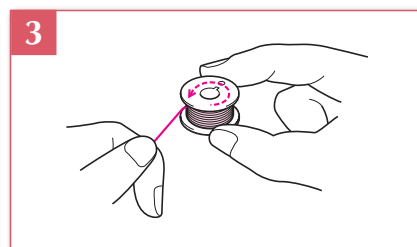
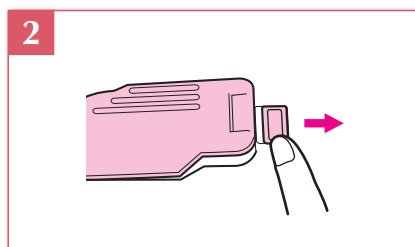
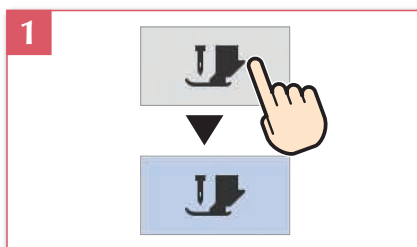
Colocación de la bobina

Mise en place de la canette

Refer to the Instruction and Reference Guide for detailed instruction.

Para obtener instrucciones detalladas, consulte el guía de referencia y de instrucciones.

Consultez le guide d'instructions et de référence pour des procédures détaillées.

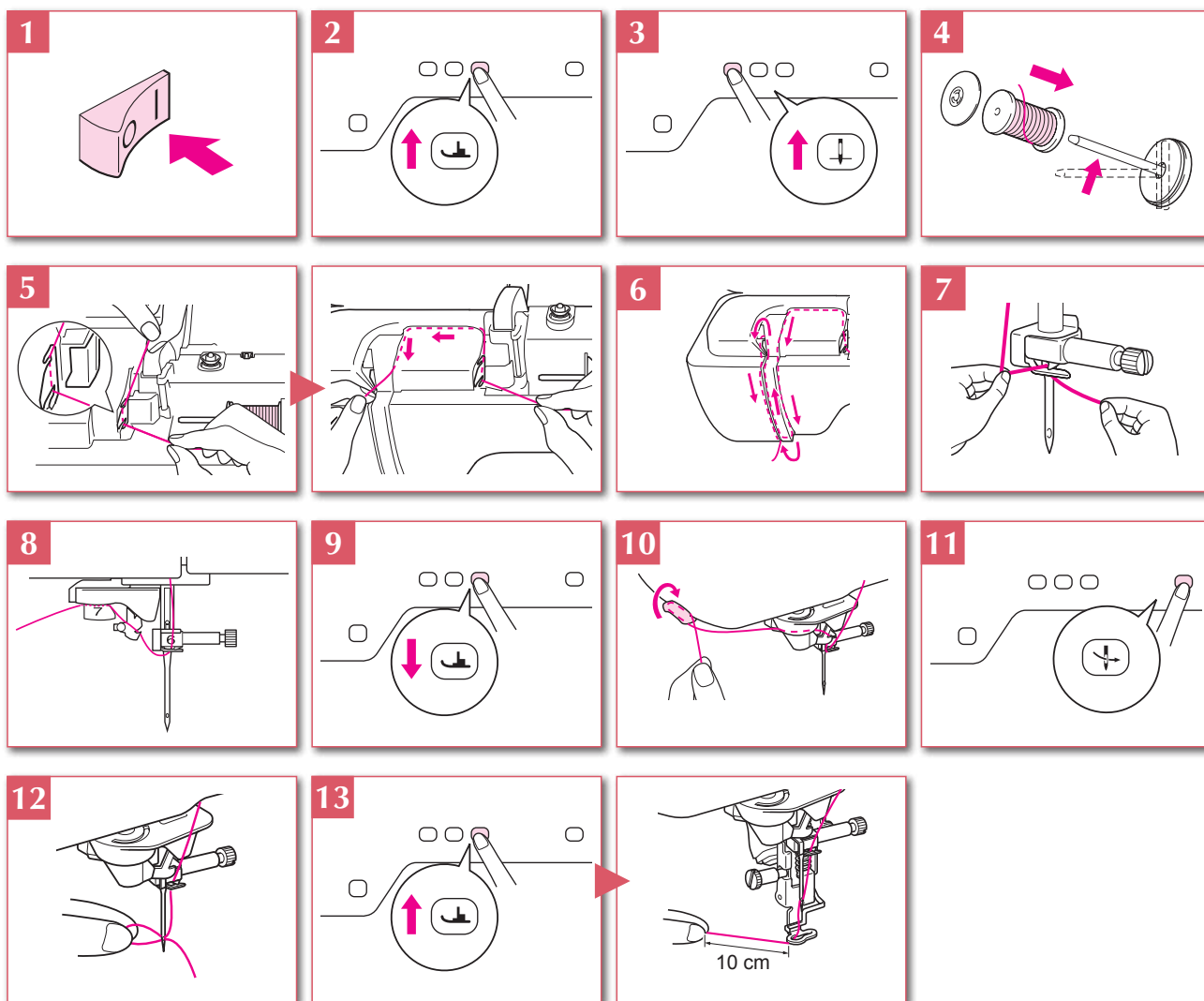
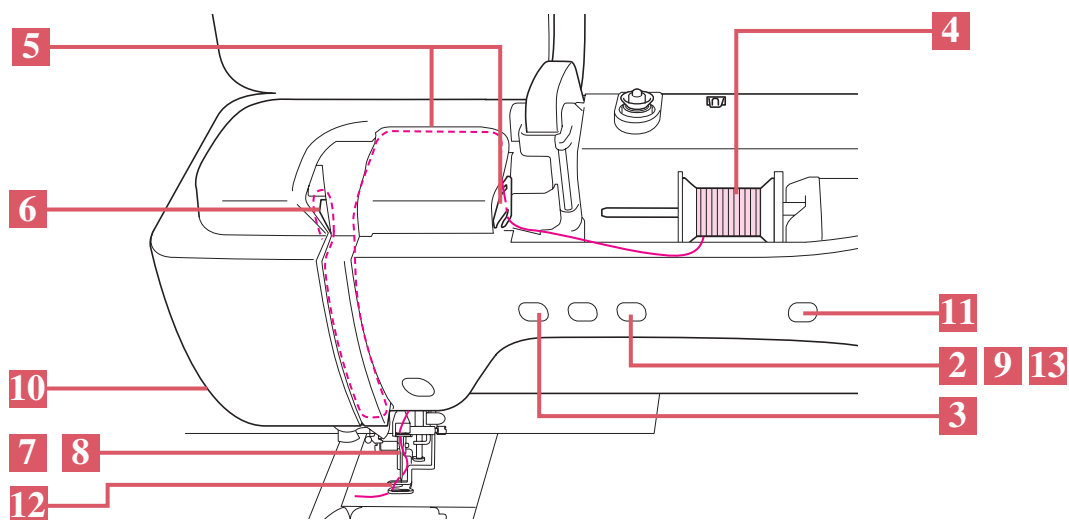




Upper Threading

Hilo superior

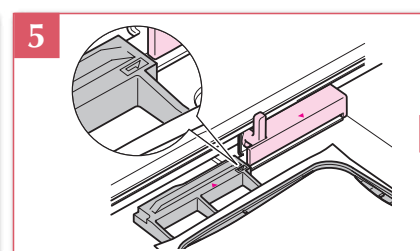
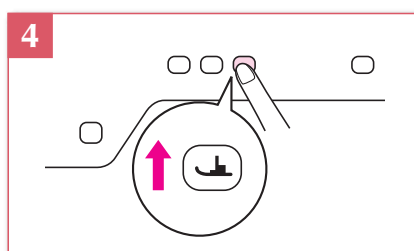
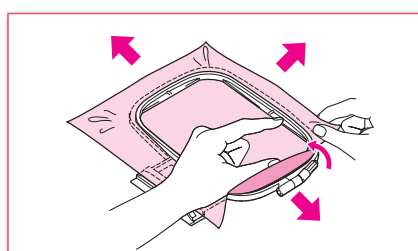
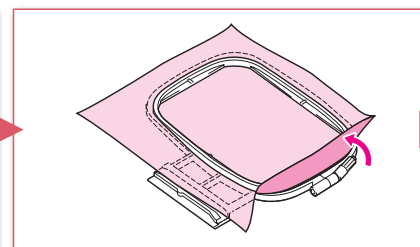
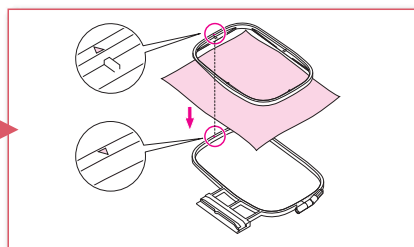
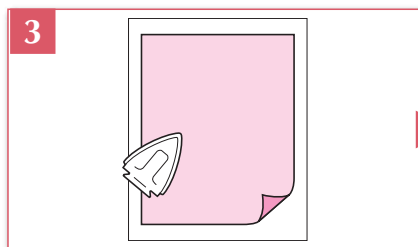
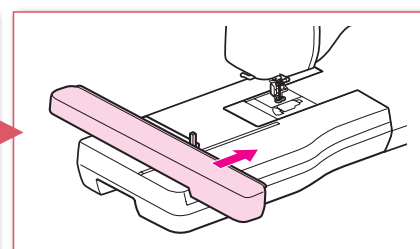
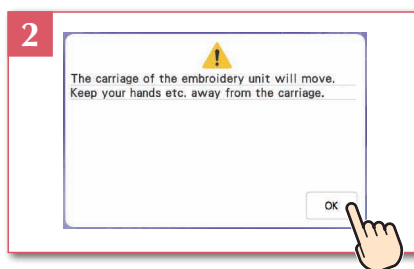
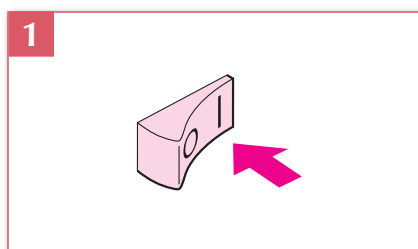
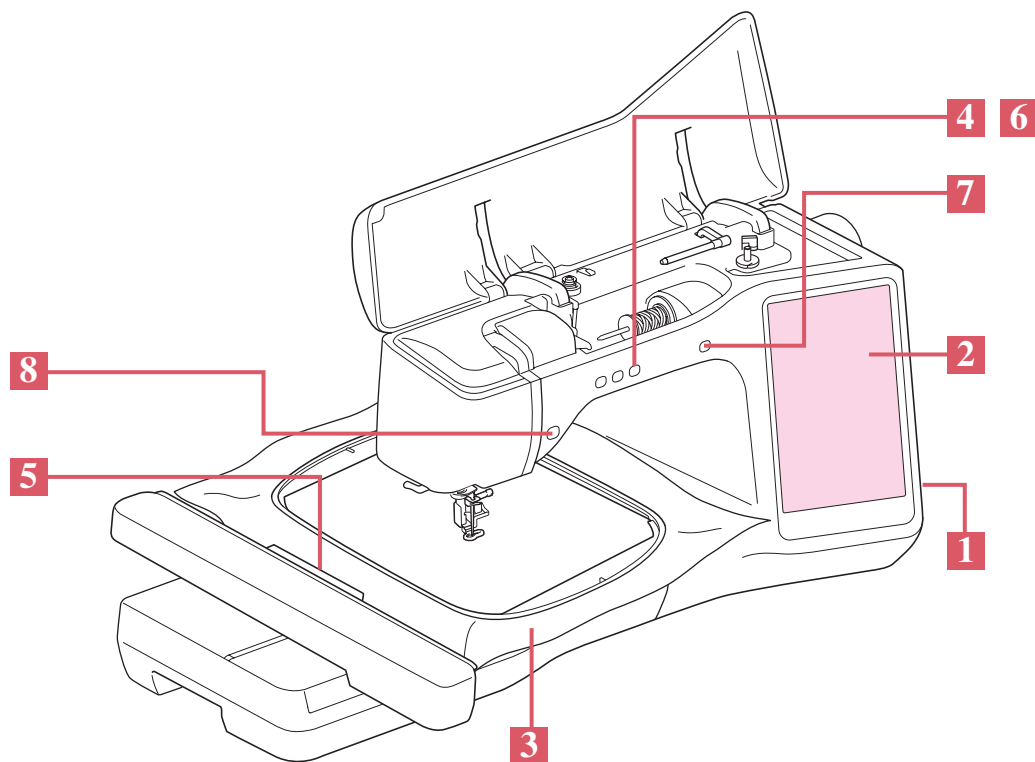
Enfilage supérieur



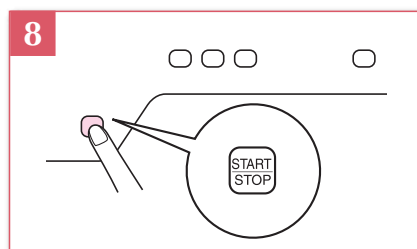
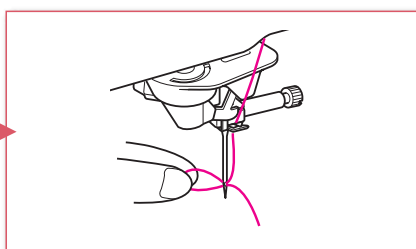
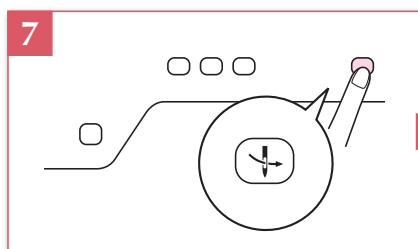
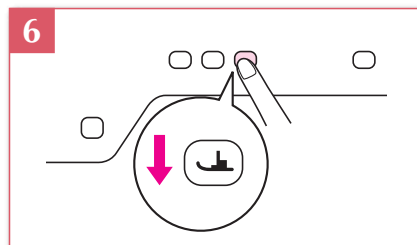
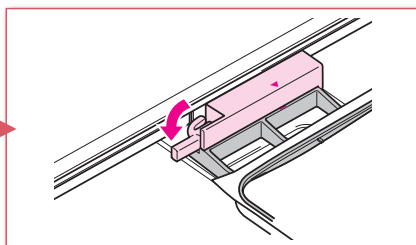
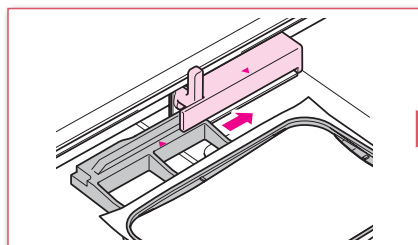
Preparing to Embroider

Preparativos para bordar

Préparation de la broderie



Preparing to Embroider
Preparativos para bordar
Préparation de la broderie



*Meridian*TM



FOR THE LOVE OF SEWING

English
Spanish
French
882-W81



XH3876-001