

BABY LOCK SEWING ACCESSORIES

Hemmer Foot

(BLQ2-HF)

Instructions

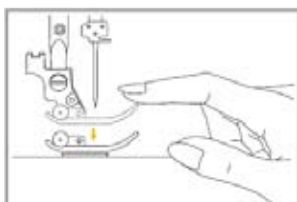
This hemmer foot is perfect for hems that are too small to do by hand. It automatically curls under a 3mm double hem while stitching with either a straight stitch or a decorative Parisian hemstitch. Works best on blouses, gowns and other projects with lightweight fabric.



INSTRUCTIONS:

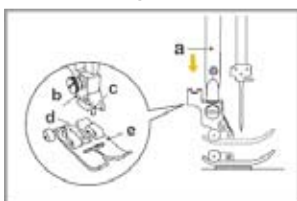
Removing the presser foot

Raise the presser foot (a).



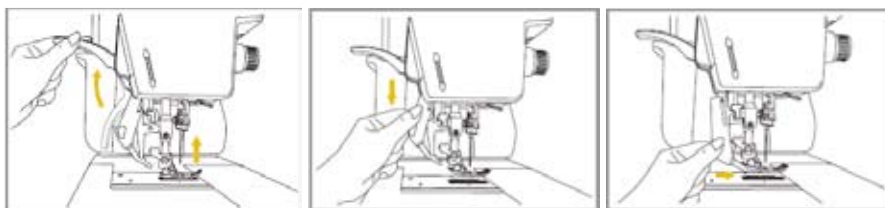
Attaching the presser foot

Lower the presser foot holder (b) until the notch (c) is directly above the pin (d). Lower the presser foot holder (b) and the presser foot (e) will engage automatically.



The Precision Dual-Feed Quilting System (PDQ) feeds the fabric from the top and bottom simultaneously to ensure matching of the fabric layers, used for quilting layers of fabric and batting, and when matching checked, striped or plaid fabrics.

To Activate and Deactivate the Precision Dual-Feed Quilting System (PDQ)

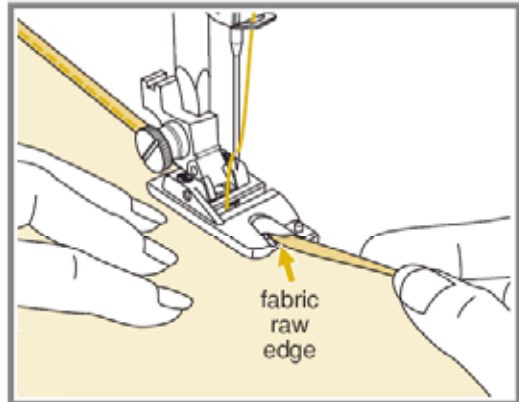
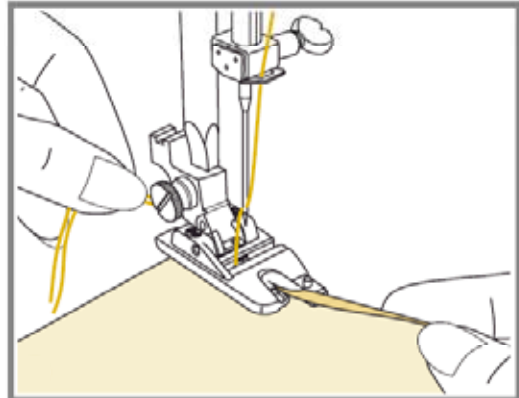
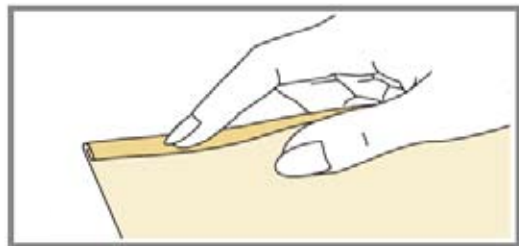


To activate the PDQ system, raise the presser foot. Lower the PDQ mechanism slowly and swing the PDQ mechanism forward under the back of the presser foot until it is engaged and stays in the system. To deactivate the PDQ system, raise the presser foot, pull down on the mechanism and swing it to the rear then raise the PDQ up.



FOR THE LOVE OF SEWING

1. Fold the edge of the fabric over about 1/8" then fold it over again 1/8" for about 2" along the edge of the fabric.
2. Insert the needle into the fold by rotating the handwheel towards you, and lowering the presser foot. Sew several stitches and raise the presser foot.
3. Insert the fabric fold into the spiral opening of the hemmer foot. Adjust the fabric back until the fold forms a scroll shape.
4. Lower the presser foot and start sewing slowly guiding the fabric raw edge against the recess in the hemmer foot and the fabric into the scroll of the foot.



FOR THE LOVE OF SEWING

800-422-2952

www.babylock.com