

# BABY LOCK SEWING ACCESSORIES

## Blind Stitch Foot with Guide

(BLG-BSGF)

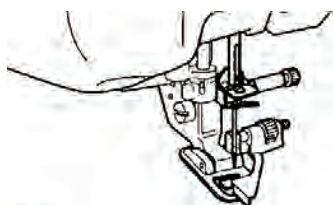
### Instructions



Looking for a quick, easy way to make your hems invisible? This replacement foot was designed specifically for easily stitching a blind stitch. You can also use this foot for quick edge stitching along fabric edges.

#### INSTRUCTIONS:

Remove presser foot and attach snap-on blind stitch foot.

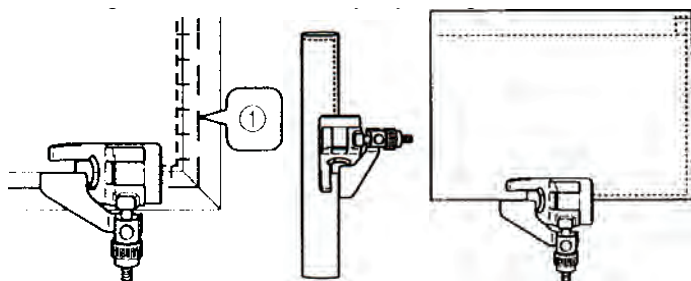


#### Sewing







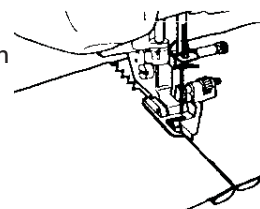
#### When Edge Stitching

1. Position needle the distance you wish it to be from the edge of the fabric and lower needle in that position.
2. Turn foot guide screw and carefully adjust to guide fabric.



#### When Sewing Seams

1. Select "  ".
2. Align position of foot guide to needle position.
3. Select desired stitch. Examples:   
4. Place cloth under foot so that foot guide is lined up between both edges of fabric.
5. Lower foot and sew.



#### When Blindstitching

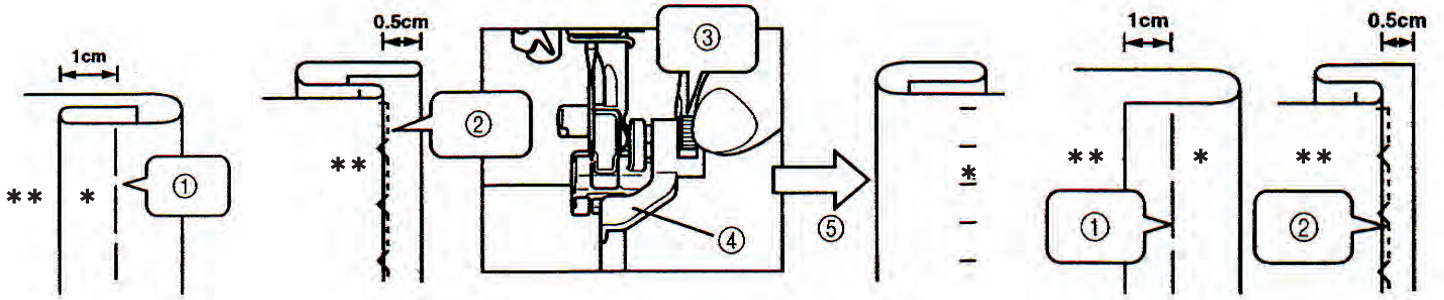
1. Select desired stitch. Examples:  



**FOR THE LOVE OF SEWING**

**When using regular weight fabric**

**When using heavyweight fabric**



1. Basting
2. Sewing position
3. Turn screw to adjust guide to folded hem.
4. Guide
5. Turn to front side

\* Front side  
\*\* Reverse side



**FOR THE LOVE OF SEWING**

800-422-2952

[www.babylock.com](http://www.babylock.com)