

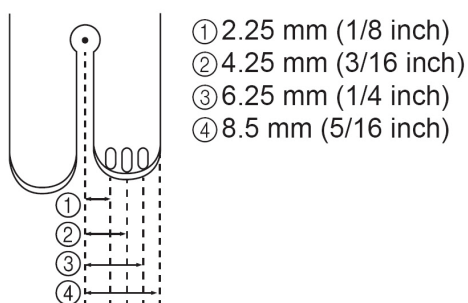
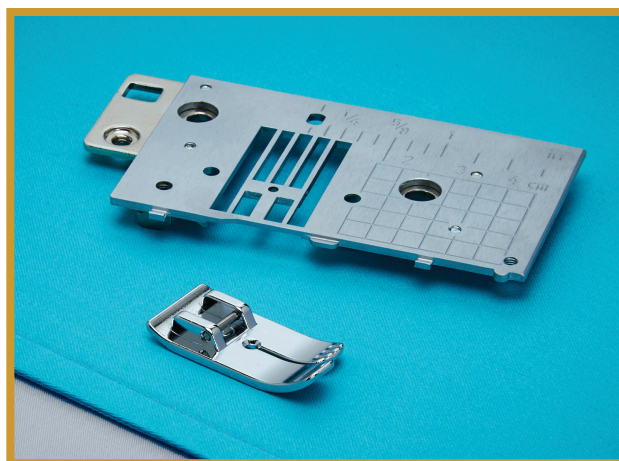
# BABY LOCK SEWING ACCESSORIES

## Straight Stitch Needle Plate & Foot Set

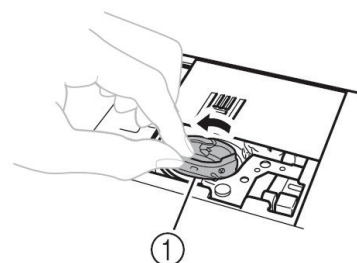
(BLMAC-SS)

### Instructions

The straight stitch needle plate can only be used for straight stitches (middle needle position stitches). Use the straight stitch needle plate when sewing thin fabrics or when sewing small pieces which tend to sink into the hole of the regular needle plate during sewing. \*Refer to the machine's instruction manual when operating the machine.

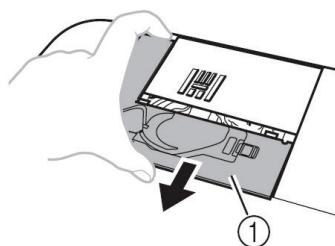


5. Grasp the bobbin case, and then pull it out.



① Bobbin case

1. Raise the presser foot and turn the main power to OFF.
2. Remove the needle, presser foot and presser foot holder.
3. Remove the flat bed attachment or the embroidery unit if either are attached.
4. Remove the needle plate cover.



① Needle plate cover

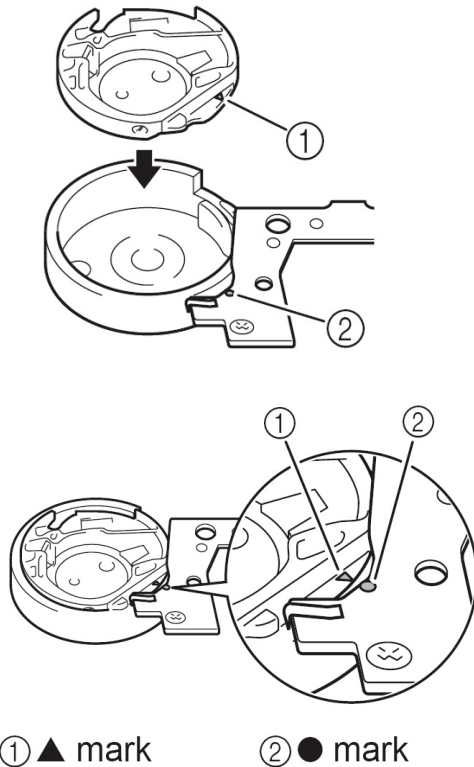
6. Use the L-shaped (or Disc-shaped) screwdriver included with the machine to unscrew and remove the regular needle plate.



7. Set the straight needle plate in place and use the L-shaped (or Disc-shaped) screwdriver to tighten the plate.

\*Align the two screw holes on the needle plate with the two on the machine and screw in the needle plate.

8. Insert the bobbin case so that the ▲ mark on the bobbin case aligns with the ● mark on the machine.



\*After sewing, make sure to remove the straight stitch needle plate and the straight stitch foot, and reinstall the regular needle plate, the needle plate cover and the presser foot "J".

**CAUTION:** Slowly turn the hand wheel counter clockwise before sewing to make sure the needle is not in contact with the straight stitch foot and straight stitch needle plate. If the needle hits the presser foot, the needle may break and cause injury.

**Memo:** When using the stright stitch needle plate, all straight stitches become middle needle position stitches. You cannot change the needle position using the keys to change the stitch width.

9. Reinstall the needle plate cover.  
10. Attach the needle and presser foot holder.  
11. Attach the straight stitch foot.  
12. Turn on the machine, and then select any of the straight stitches.  
13. Start sewing.



**FOR THE LOVE OF SEWING**

[www.babylock.com](http://www.babylock.com)