

Upgrading Your Machine's Software

You can use USB media or a computer to download upgrade software for your embroidering machine. When an upgrade program is available on " www.babylock.com ", please download the files following the instructions on the website and steps below.

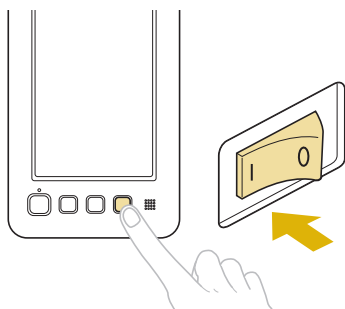


Note

- When using USB media to upgrade the software, check that no data other than the upgrade file is saved on the USB media being used for this upgrade.
- Compatible operating systems:
Microsoft Windows XP, Windows Vista, Windows 7, Windows 8

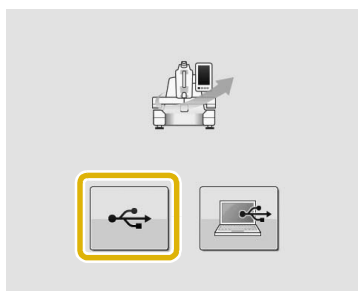
Upgrade procedure using USB media

- 1** While pressing the automatic threading button, turn the main power to on.

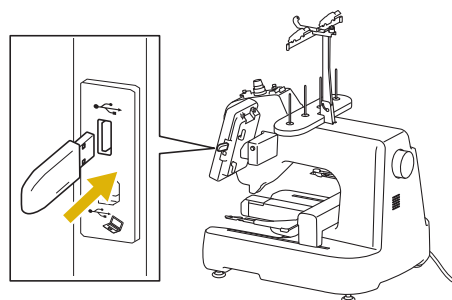


→ The following screen will appear on the LCD.

- 2** Touch  .



- 3** Insert the USB media into the USB port on the machine. The media device should only contain the upgrade file.



- ① USB port
- ② USB media



Note

- The access lamp will begin blinking after inserting USB media, and it will take about 5 to 6 seconds to recognize the media. (Time will differ depending on the USB media).

- 4** Touch  .



→ The upgrade file is loaded.

**Note**

- If an error occurs, a red text error message will appear. When the load is performed successfully, following message will appear.



- 5 Remove the USB media, and turn the machine off and on again.

Upgrade procedure using computer

For computers and operating systems, see "Precautions on using the computer to create and save data" on page 105.

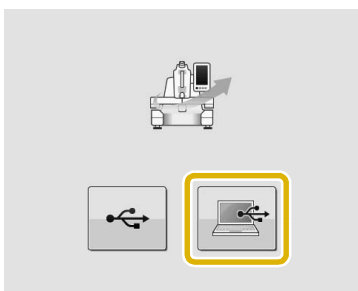
**Note**

- Do not connect any additional USB media devices to your computer when using the USB cable.

- 1 While pressing the automatic threading button, turn the main power to on.

→ The following screen will appear on the LCD.

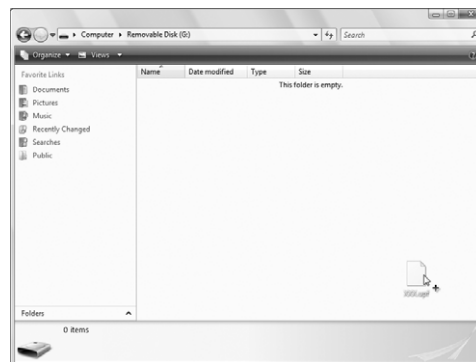
- 2 Touch .



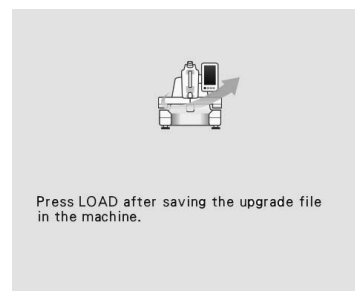
- 3 Plug the USB cable connector into the corresponding USB ports for the computer and for the machine.

→ "Removable Disk" will appear in "Computer (My computer)".

- 4 Copy the upgrade file to "Removable Disk".



- 5 Touch .



→ The upgrade file is loaded.

**Note**

- If an error occurs, a red text error message will appear. When the load is performed successfully, following message will appear.



- 6 Unplug the USB cable, and turn the machine off and on again.