



Baby Lock Destiny2 (Model BLDY2) Software Update Version 3.02

February 2018




Introduction

If the software version of your Destiny2 (Model BLDY2) is earlier than version 3.02, an update program is now available for download to improve its performance.

Version 3.02 update will provide the following changes:

1. Improved machine's functionality for returning the presser foot to the proper position after canceling the free motion sewing mode.

To confirm the software version of your BLDY2

1. Press the power switch to "I" to turn on your machine.
2. If the opening movie is played, touch anywhere on the LCD screen.
3. Press  (Machine setting mode key) to display the machine's settings screen.
4. The machine's settings screen appears.
5. Switch the settings screens by using  (Previous page key) or  (Next page key) to display the machine's program version.



6. If “Version” shown in the screen is already “3.02” or later, it is not necessary to update your machine with the software on this page.

How to download the update program



1. Create a temporary folder (ex. C:\Temp) on your computer to save the update program file to be downloaded.
 2. Download the file: **XV_V302_taco_Cmb_P.upf**, to the temporary file on your computer.
 3. If using a USB to update your machine, you must **FORMAT** the USB.
 4. Copy the file to the formatted USB.
 5. Follow the instructions in your manual for putting your machine into update mode and completed the update.
- 1.

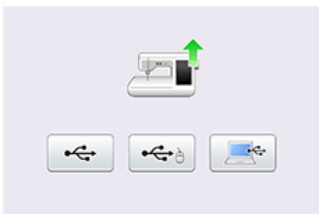
How to update your machine's software

You can use USB Flash drive or a computer to update your machine's software. Follow the procedure described in the instruction manual.

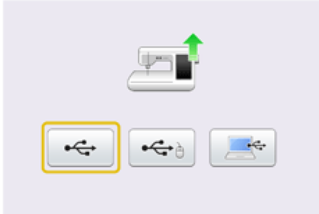
***** NOTE *****

- Do not turn off your machine while the machine is saving the update software to itself. If the machine's power is turned off while saving the update software, it may result in damage to the machine.
- Use a 4GB or larger USB flash drive when updating the machine.
- Check that no data except for the update file is saved on the reformatted USB Flash drive, before beginning update.

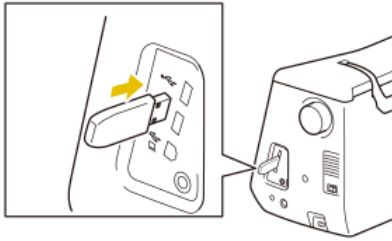
1. Insert the USB Flash drive into the USB port on the computer.
2. Copy the update file to the USB Flash drive.
3. Safely remove the USB Flash drive from the USB port on the computer.
4. While pressing the "Automatic Threading" button, turn the main power to ON.
The following screen will appear on the LCD.



5. Press the USB media key.



6. Insert the USB Flash drive into the primary (top) USB port on the machine.



7. Press the LOAD key.



8. When the message "Upgrade complete" appears, the update file has been loaded.



9. Turn the machine off.

10. Remove USB Flash drive from the USB port on the machine.

11. Turn the machine on.

12. Your machine's software has been updated to version 3.02.



Baby Lock Destiny2 (Model BLDY2) Update History

➤ Version 3.01 update provided the following changes.

1. Improved machine's functionality for Automatic Presser Foot Lift functions.

This function cannot be used when using the function to specify the sewing end point with the sensor pen.

The function can only be used with stitches where presser foot "J", "N" or "X" is indicated in the upper-left corner of the screen. If any other stitch is selected, it is not available.

Note:

Automatic Presser Foot Lift functions are only available for BLDYU2 (Destiny Embroidery and Sewing Upgrade II) users.

2. Improved machine's functionality for keeping the proper position of the embroidery foot when moving the embroidery frame after cutting the thread.
3. Improved machine's functionality for sewing reinforcement stitches when embroidering..
4. Modified the illustrations for explaining the usage of a certain stitch in the sewing guide function.

➤ Version 3.00 update provided the following changes.

1. Improved conversion function to create an embroidery data from complex image on IQ Designer.
2. Improved machine's functionality for sewing reinforcement stitches when embroidering.
3. Adjusted the height of embroidery foot when the embroidery frame moves to replace a thread.
4. Improved the image rendering.

➤ Version 2.01 update provided the following changes.

1. Improved machine's functionality for the following features.
 - IQ Designer
 - Editing embroidery patterns
 - Reading embroidery data
 - USB function
 - Tutorial video function
 - Spool Stand LED function
2. Improved machine's functionality for reading the embroidery data whose file name contains characters other than the 26 letters of the alphabet and the numbers (0 through 9).



Note:

Some types of characters may not be displayed correctly on the screen.

3. The notation of embroidery frame size on the LCD is revised. [for inches as the display unit]

➤ **Version 2.00 update provided the following changes.**

1. New features have been added with software version 2.0 for BLDY2.