



LEARN & CREATE

with Baby Lock



Scrappy Flamingo Applique Pillow



Transform your scraps into a colorful conversation started within your home décor.

Skill Level: Confident Beginner

Created by: [Heather Valentine of The Sewing Loft](#)

Supplies:

Baby Lock® Jazz II sewing machine
3/4 yd fabric
Assorted scraps: pink, black, white
2 1/2 yds contrast binding
Scrap of batting

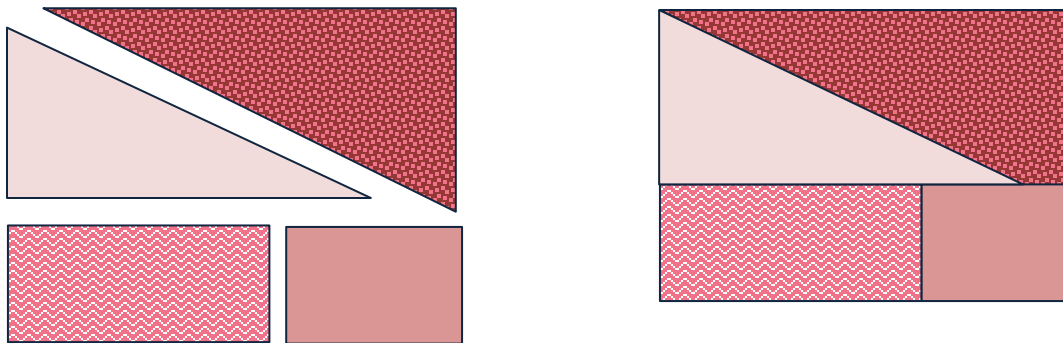
Paper back fusible
20" pillow insert
14" nylon zipper
18 ligne snap
Basic sewing supplies
Pressing cloth
Zipper foot

Cutting Instructions:

1 square, 20" main fabric & batting
1 rectangle, 6 1/2" x 20" backing fabric
1 rectangle, 14" x 20" backing fabric
2 rectangles, 2" x 7" zipper tabs

Prep Work:

- 1) Trim pressed scraps to have a straight edge along one side.
- 2) Join two pieces of fabric **right sides** together along straight side. Stitch several units together; press seam allowance to one side. Continue to join fabric units together to create a large piece of fabric 18" square.



- 3) Assemble the flamingo template together with tape per diagram to create the applique shapes. (*Template is located at the end of pattern.)
- 4) Trace applique shapes onto the paper side of fusible, leaving 1/2" between shapes; cut out, leaving a margin around each piece.
- 5) Using pressing cloth, fuse applique shapes to the **wrong side** of fabric as directed by manufacturer's instructions; cut out shapes on traced lines. Set aside.

Applique Assembly:

- 1) Layer pillow front **right side up** over batting; quilt as desired.
- 2) Join two pieces of fabric **right sides** together along straight side. Stitch several units together; press seam allowance to one side. Continue to join fabric units together to create a large piece of fabric 18" square.
- 3) Remove paper backing from flamingo applique pieces, position and layer pieces in place on front pillow cover per template. Use pressing cloth to fuse in place.

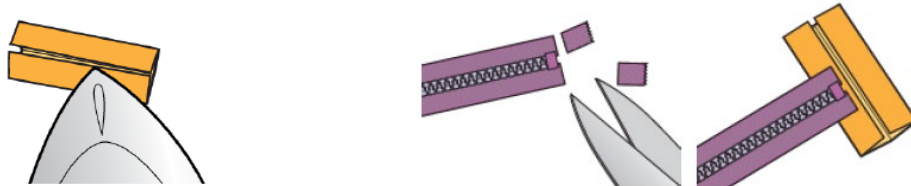
4) Select a decorative stitch and stitch applique in place. *Free motion stitching is shown on sample.

5) Attach snap to pillow cover for eye.

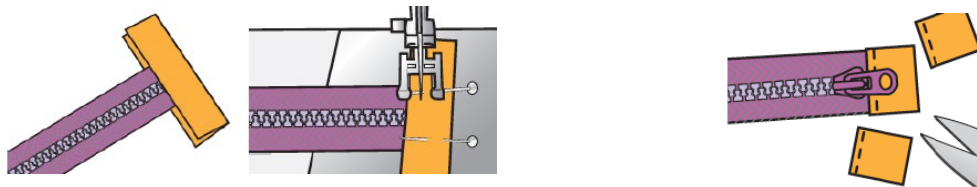
Pillow Assembly:

1- Fold zipper tab in half lengthwise and press. Open and fold edge to **wrong side** 1/2", press.

2- Trim the zipper tape just below the zipper stop. Center the zipper on the zipper tab aligning the end of the zipper with the raw edge of fabric.



3) Fold the tab in half to encase the end of zipper. Pin in place and stitch across tab to secure. Trim fabric even with the zipper tape. Repeat to the other side.

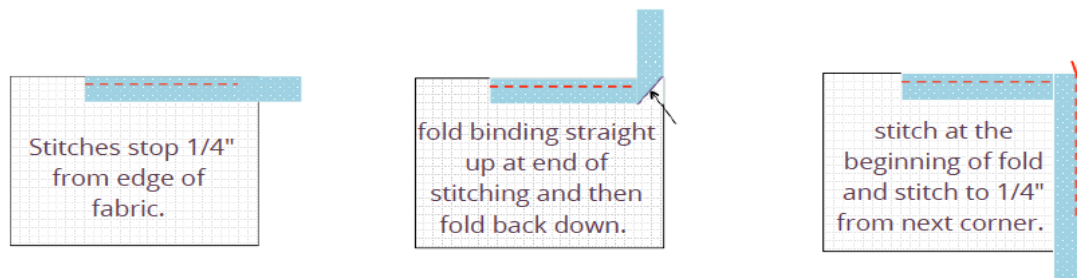


4) Align zipper tape on **right side** of pillow backing, stitch in place with zipper foot. Turn and press to expose zipper. Top stitch seam allowance to secure. Repeat along opposite side.



5) Layer pillow front and back **wrong sides together** and stitch in place around all four sides. *For a "plumper" pillow or closer cover fit, use 1/2" seam allowance.

6) Attach contrast binding to the face of pillow. Turn binding towards the back and slipstitch in place with matching thread.



7) Open zipper and insert pillow form.



For other exciting projects like this one, visit Baby Lock at www.babylock.com

2019 Baby Lock USA. This project may be freely used by individuals for non-commercial purposes. Project instructions may not be sold or distributed without approval from Baby Lock. Baby Lock must be acknowledged as the source of the project instructions through copyright or online link