

IQ Intuition Positioning App Instructions for Baby Lock



FOR THE LOVE OF SEWING

TABLE OF CONTENTS

Overview

- Learn about the application's capabilities.....2
- Learn how to view the application instruction videos that are on the machine.....4

Enable a Wireless Network Connection

- Learn how to connect the machine to a wireless network.....5
- Learn how to install the application from the machine.....5
- Learn how the application connects with the machine.....6
- Learn how to calibrate your smart device camera lens.....6

Position an Embroidery Design

- Learn how to position a design using the Easy mode.....7
- Learn how to calibrate the hoop and position a design using the Advanced mode.....8

Create Embroidery Data in IQ Designer within the Hoop

- Learn how to use IQ Intuition Positioning on your smart device to photograph hooped Fabric for use in IQ Designer.....10

Create Embroidery Data in IQ Designer with Image on the Smart Device

- Learn how to transfer image data saved on the smart device to the machine for use in IQ Designer12



FOR THE LOVE OF SEWING

OVERVIEW

This manual will help you learn how to use the IQ Intuition Positioning app through step-by-step instructions.

We are sure that the brilliant features of IQ Intuition Positioning will make your projects spectacular.

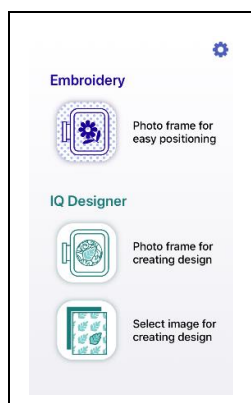
Below is a general explanation of how the app works. Each step will be more thoroughly explained and illustrated later in these instructions.

To get started, you will need to:

- Install the app from your machine's settings screen, this document, or by searching for the app called **"IQ Intuition Positioning"** (in App Store for iOS or in Play Store for Android)
- Connect your Baby Lock machine to your wireless network
- Connect your smart device to the same wireless network

Each time you open the app, you will be guided through the necessary steps for the app to find and connect to the Baby Lock machine and to send your image to the machine.

There are three functions available within the app:



*Select the first icon to position an embroidery design.

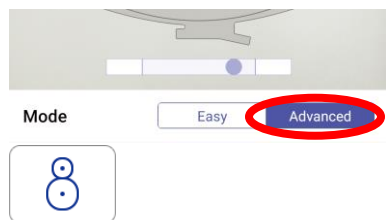


*Select the second icon to create an embroidery pattern in IQ Designer and then place the design in a specific location within the hoop.



Select the third icon to select an image stored on your smart device to create an embroidery pattern in IQ Designer. (See page 12 of this book.)

*The first two options in the app use the codified embroidery frames included with your Baby Lock machine. These two functions allow you to select an easy mode for placement or an advanced mode for more precise placement.



When you select the advanced mode, you will use an embroidery positioning sticker to calibrate the frame. You will then be able to manually position the design or automatically align the design with the positioning sticker.

The second and third options in the app work with your machine's IQ Designer function to create or edit embroidery data. You will be able to use the image from your smart device to:



Load the hooped fabric or art file as the background when creating your pattern



Line design

Convert a line drawing to embroidery data



Illustration design

Convert an illustration to embroidery data

This manual is intended to introduce the basic functions of the app and how it interacts with your Baby Lock machine. For more information about how to create designs in IQ Designer, please refer to the relevant chapter of IQ Designer in your machine's Instruction and Reference Guide.

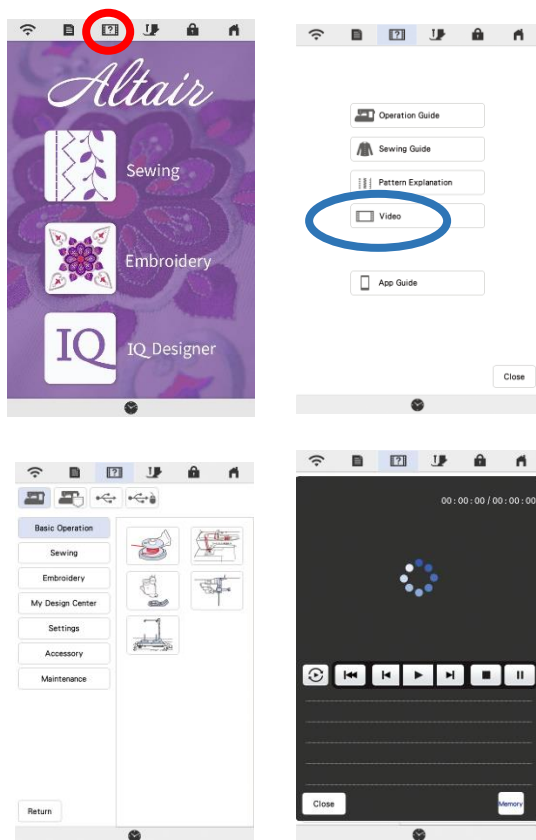
System Requirements for Intuition Positioning App



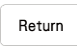
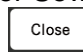
To be able to install and use the App, smart devices must meet the following minimum requirements:

- Operating System: Android 5.0 or later / iOS 10.0 or later
- Camera resolution: 5MP or higher

Viewing Instructional Videos

Depending on your model, there may be instructional videos installed on your Baby Lock machine which demonstrate the app's functions (example below). Be sure to watch these videos and read this instruction manual before using the application.



1. Press **Sewing Machine Help** on the Home Screen.
2. Select **Video**. The new page displays a list of video topics. Touch a topic to view the available videos.
3. Press **Play**  to watch.
4. Press **Stop**  to end.
5. Press **Repeat**  to watch again.
6. Press **Close**  to return to the video list.
7. Press **Return**  to go back to the main screen for Sewing Machine Help.
8. Select **Close**  to exit.

The built-in instructional videos for the app can be found in these categories:

Settings:

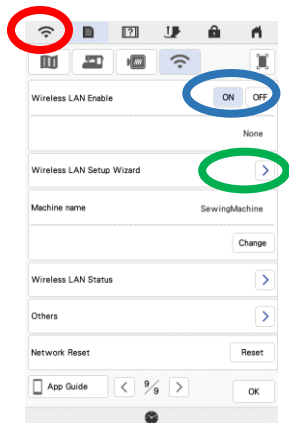
- Enabling a Wireless Network Connection (see page 5 of this book)

Embroidery:

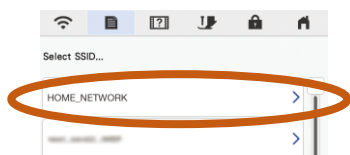
- Using IQ Intuition Positioning to Position an Embroidery Design (see page 7 of this book)
- Positioning Using IQ Intuition Positioning and an Embroidery Positioning Sticker (see page 8 of this book)
- Converting an Image on the Smart Device to Image Data
- Drawing Embroidery Data on Fabric (see page 10 of this book)
- Converting a Line Drawing to Embroidery Data (see page 12 of this book)
- Converting an Image to Embroidery Data (see page 12 of this book)

Enabling a Wireless Network Connection on Your Baby Lock Machine

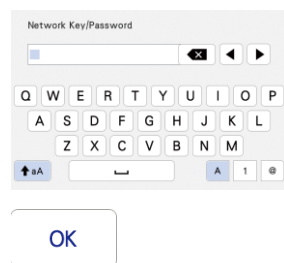
To connect your machine to a wireless network, the security information (SSID and network key) for your home network will be required. The network key may also be called a password, security key or encryption key. First, find your security information and note it.



1. Press **Wireless LAN key** at the top of the screen.
2. Set **Wireless LAN Enable** to ON.
3. Press **Wireless LAN Setup Wizard**.



4. Select the **desired network below Select SSID**.



5. Specify settings for SSID and Password, and then press OK. This completes the connection.

Installing the App

To install the app using your Baby Lock machine or this guide, you will need to have a QR Reader app installed. Otherwise, search for the app called **"IQ Intuition Positioning"** (in App Store for iOS or in Play Store for Android)



Press the smart device key in the upper-right corner of the machine's screen. When the IQ Intuition Positioning icon and QR codes appear, scan the QR code for your smart device (Android or iOS). You can also scan the codes in the insert instructions packed with your machine.

Connecting the App to Your Baby Lock Machine

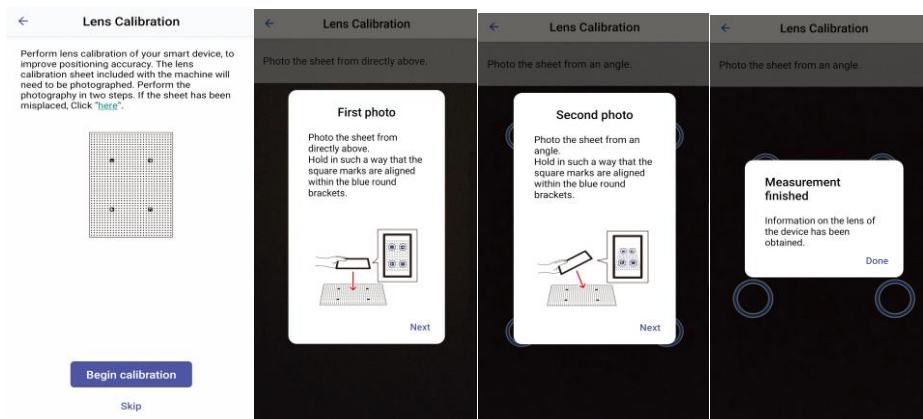
You will need to check your smart device's WLAN settings to ensure that it is connected to the same network as your Baby Lock machine. Before opening the app on your smart device, be sure to turn on your Baby Lock machine and enable the wireless LAN. The first time you open the IQ Intuition Positioning app, the app will search for and then pair with your Baby Lock machine. The next time you use the app with your machine, the app will usually pair with your machine automatically.



1. After IQ Intuition Positioning is installed on the smart device, tap its icon to start it.
2. Tap the Search key to search for the machine that is connected to the same wireless LAN.
3. Tap Select key.
4. Select your machine in the Select Device screen. For this example, the name appears as "SewingMachine", but this can be changed in your machine's settings.
5. Tap Finish key.

Calibrating Mobile Device Camera Lens

When first using the IQ Intuition Positioning app, you will be prompted to calibrate the camera lens of your smart device for improved positioning accuracy. The app will guide you through these steps:

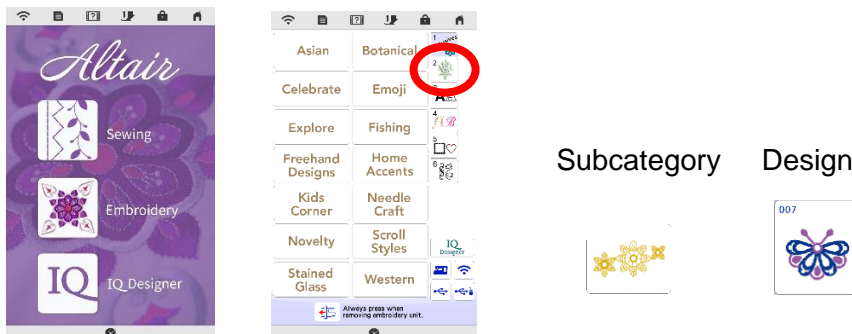


Positioning an Embroidery Design

Positioning a Design Using the Easy Mode

To use the app to position a design, you will first need to **hoop the fabric** (with stabilizer) in one of the codified hoops and **set an embroidery design**.

The example shown in this section uses the **Easy mode** in the app .

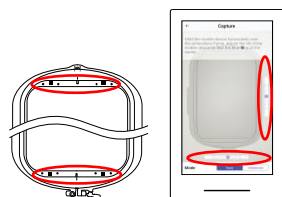


After the selected pattern appears on the machine's screen, **press Set key** in the lower-right corner of the screen.



On your smart device, open the app and select the first icon

After the app pairs with your machine, leave the mode set to Easy.

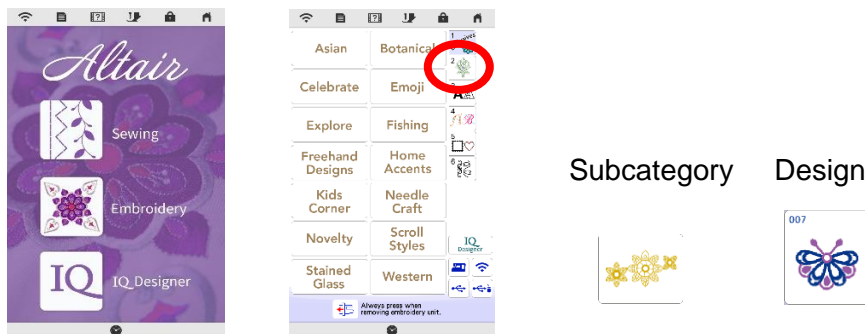


1. When the embroidery frame capture screen appears, **align the frame** on the screen with the actual embroidery frame. The black marks at the top and bottom of the frame must align with the black circles in the app.
2. Position the smart device so that the blue circles in the bars on the right and bottom of the screen are within the adjustment areas. When the countdown begins, the photo has been successfully taken.
3. Your smart device will prompt you to send the image to your machine. You will receive confirmation when the image has been sent.
4. After the image is delivered to your machine, you will see a prompt on the machine's screen to update. **Attach the frame** with the fabric first, then **select OK** to update. The embroidery arm will move.
5. On the machine's LCD screen, the **embroidery pattern** that you set appears in the **fabric** that was photographed. **Press Edit key** in this screen to move, rotate, and/or resize the embroidery pattern.
6. Embroider the design to complete the process.

Positioning a Design Using the Advanced Mode

To use the app to position a design, you will first need to **hoop the fabric** (with stabilizer) in one of the codified hoops and **set an embroidery design**.

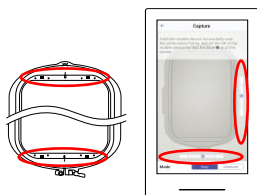
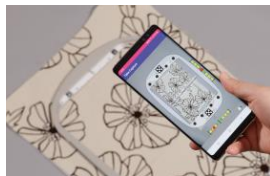
The example shown in this section uses the **Advanced mode** in the app.



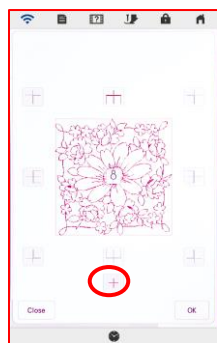
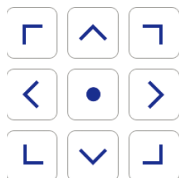
After the selected pattern appears on the machine's screen, **press Set key** in the lower-right corner of the screen.

On your smart device, open the app  and select the first icon. 

After the app pairs with your machine, **change the mode to Advanced**.



1. When you select the advanced mode, you will be prompted to **attach an embroidery positioning sticker** where you want the design to stitch.
2. Attach the sticker so that the center dot in the lower circle aligns with one of nine reference points for placement: center, upper left, upper center, upper right, left center, right center, lower left, lower center, and lower right.
3. When the embroidery frame capture screen appears, **align the frame on the screen with the actual embroidery frame**. The black marks at the top and bottom of the frame must align with the black circles in the app.
4. Position the smart device so that the blue circles in the bars on the right and bottom of the screen are within the adjustment areas. When the countdown begins, the photo has been successfully taken.
5. Your smart device will prompt you to send the image to your machine. You will receive confirmation when the image has been sent.



6. On the machine's LCD screen, the **embroidery pattern** that you set appears in the **fabric** that was photographed. The **embroidery positioning sticker** is also visible on the LCD screen.

7. The carriage will be positioned so that the beam of the W+ embroidery foot is very close to the center of the bottom circle of the positioning sticker. Use the arrow keys (shown to the left) to **align the LED pointer** with the center of bottom circle of the **embroidery positioning sticker**, and then **press OK key**. By calibrating the position in this way, the embroidery pattern can be precisely positioned.

8. **Select the Edit key** to display the editing window. **Select the Size key**, adjust the design to the desired size, and then **press the OK key**.

9. **Select the Embroidery key** in the lower right corner of the screen.

10. **Select the Layout key** and then the **positioning sticker key**.

Nine reference points appear in the screen: center, upper left, upper center, upper right, left center, right center, lower left, lower center, and lower right.

11. To position the design so that the **design's center** matches the embroidery positioning sticker, **select the Center key**, and then press **OK key**. The embroidery pattern will snap to the position and angle of the embroidery positioning sticker.

You can use this same process for any of the other eight reference points.

12. Check the design position on the fabric background. If necessary, use the move and rotate tools to perfect the design's position.

13. Embroider the design to complete the process.

Creating Embroidery Data in IQ Designer Using the Hoop

With the app, an image photographed with a smart device can be used as a background in IQ Designer. Details can be added to the background, and the drawing can be converted to embroidery data. The combination of the fabric pattern and hand-drawn embroidery further broadens your range of expression.

One practical application for this function is adding design details to a fabric.

To create embroidery data in IQ Designer to be stitched in a specific location, you will first need to **hoop the fabric** (with stabilizer) in one of the codified hoops and open IQ Designer on the machine's Home screen.

On your smart device, open the app

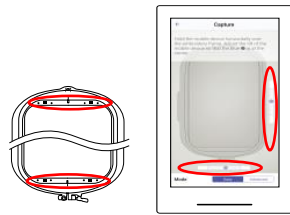


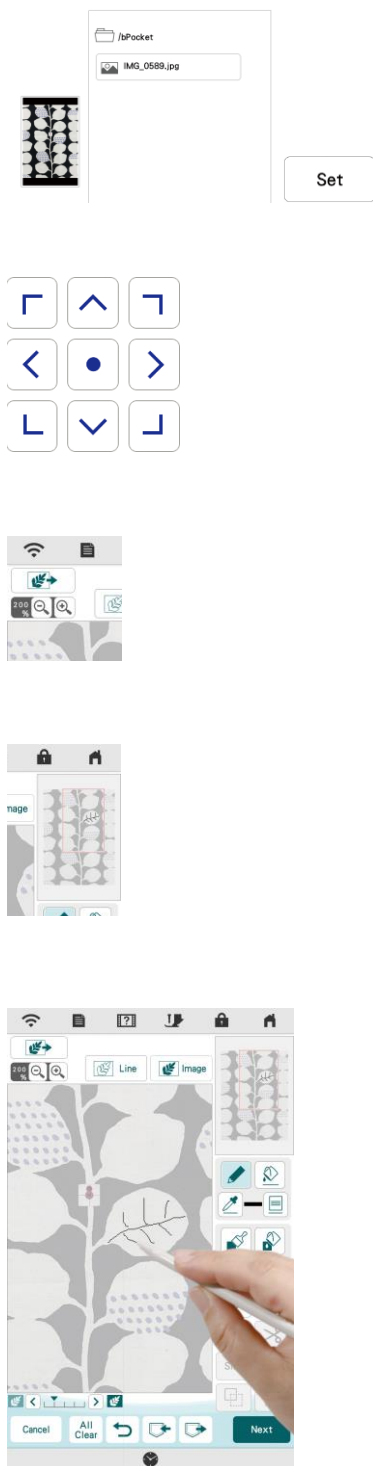
and select the second icon



After the app pairs with your machine, set the mode to Easy or Advanced, depending on the placement accuracy needed. The example below uses the Advanced mode for precise positioning.

1. When you select the advanced mode, you will be prompted to **attach an embroidery positioning sticker**. The sticker will be used for calibration only, so its exact position and/or angle is not important.
2. When the embroidery frame capture screen appears, **align the frame on the screen with the actual embroidery frame**. The black marks at the top and bottom of the frame must align with the black circles in the app.
3. Position the smart device so that the blue circles in the bars on the right and bottom of the screen are within the adjustment areas. When the countdown begins, the photo has been successfully taken.
4. Your smart device will prompt you to **send the image** to your machine. You will receive confirmation when the design has been sent.
5. **Attach the embroidery frame** to the machine.
6. **Press Load key** at the top of the pattern drawing screen of IQ Designer.
7. On the machine's LCD screen, **Press the wireless network** connection key to retrieve the image.





8. **Select the image** transferred from the smart device (the file displayed first in the list), and then **press the Set key**. A preview of the image will be displayed.

9. The carriage will be positioned so that the beam of the W+ embroidery foot is very close to the center of the bottom circle of the positioning sticker. Use the arrow keys (shown to the left) to **align the LED pointer** with the center of the bottom circle of the **embroidery positioning sticker**, and then **press the OK key**. By calibrating the position in this way, the embroidery pattern to be created can be precisely positioned.

10. The **fabric** that was photographed and the **embroidery positioning sticker** will be displayed on the machine's LCD screen.

11. Display the screen enlarged with the **Zoom** key in the upper-left corner of the screen.

12. Move the red frame in the pattern preview area until the area where you want to draw the embroidery appears in the pattern drawing area.

13. With the touch pen (stylus), **draw the embroidery design** on top of the background appearing in the pattern drawing area.

14. **Press Next key** to continue to the stitch setting screen.

15. On this screen, you can **select the different regions and lines** within the design and make changes to the stitch settings. Refer to your machine's Instruction and Reference Guide for more information about IQ Designer features and functions.

16. After assigning stitch types and properties, **select Preview**. Set the design and convert to embroidery data.

17. Embroider the design to complete the process.

Another practical application for loading an image as a backdrop is adding a decorative fill pattern around an embroidered design. For the precision required for this type of project, we recommend using the Advanced mode of the application.

Creating Embroidery Data in IQ Designer with an Image from the Smart Device

Your machine's IQ Designer function allows you to create embroidery data from images transferred by either a USB media or from the IQ Intuition Positioning app. The images are divided into two categories: Line drawings and illustrations.

Line Drawings



- Must be drawn clearly using lines with approximately 1 mm thickness
- Should be drawn in a strong contrast

If the lines are too short or gathered too densely, they will not be loaded correctly.

If you cannot convert the line drawing as expected, you can load the image as a background and use the stylus to trace the elements of the drawing.

Line drawings are converted without recognizing the thickness of lines. If you want to change the thickness of lines, specify in the settings screen.

Line drawings are converted as black lines. You can change the color.

For more information about the process, refer to your machine's Instruction and Reference Guide.

Illustrations



- Must be clearly drawn, with no gradation, fading or blurriness
- Must be at least a 5mm (approximately 1/4 inch) square
- Must be extremely simple images



If the image is too complex, it will not be loaded correctly.

If you cannot convert the illustration as expected, you can load the image as a background and use the stylus to trace the elements of the drawing.

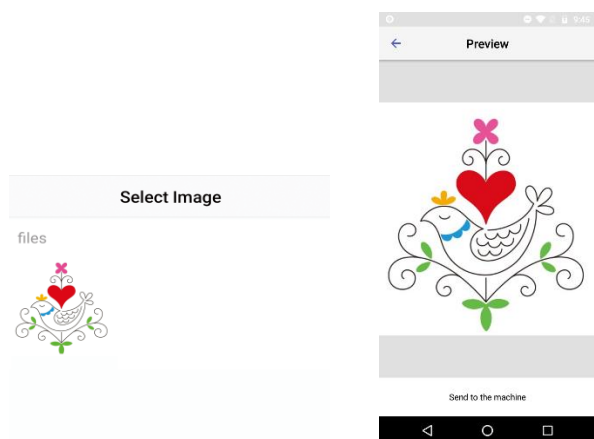
For more information about the process, refer to your machine's Instruction and Reference Guide.

NOTE: Sizing options may be limited depending on the image display on your smart device. If the finished design needs to be a specific size, consider printing the image to the size you need and placing the printed image under a coded hoop. Then follow the steps in **Creating Embroidery Data in IQ Designer Using the Hoop** eliminating the fabric hooping step.

1. To create embroidery data in IQ Designer with data transferred from the app, open IQ Designer on the machine's Home screen.

2. To load an image stored on your smart device, open the app  and select the third icon .



3. After the app pairs with your machine, you will be prompted to select an image from your smart device.



4. After selecting and sending the image, you will receive confirmation when the image has been sent.
5. Once the image is sent, follow the remaining instructions on this page to begin converting the artwork into embroidery. Please note that one set of instructions is for line drawings, and one set is for illustrations.



Line Drawings



6. To convert a line drawing to embroidery data, select the  **Line design** icon.
7. On the machine's LCD screen, **Press** the **wireless network** connection key  to retrieve the image. Select the image file at the top of the list.
8. Follow the steps in the machine's Instruction and Reference Guide to assign stitch types, stitch properties, and colors.

Illustrations



6. To convert an illustration to embroidery data, select the  **Illustration design** icon.
7. On the machine's LCD screen, **Press** the **wireless network** connection key  to retrieve the image. Select the image file at the top of the list.
8. Follow the steps in the machine's Instruction and Reference Guide to assign stitch types, stitch properties, and colors.

This image shows a single sheet of white paper with horizontal ruling lines. The lines are evenly spaced and run across the width of the page. There is no text or other markings on the paper.

