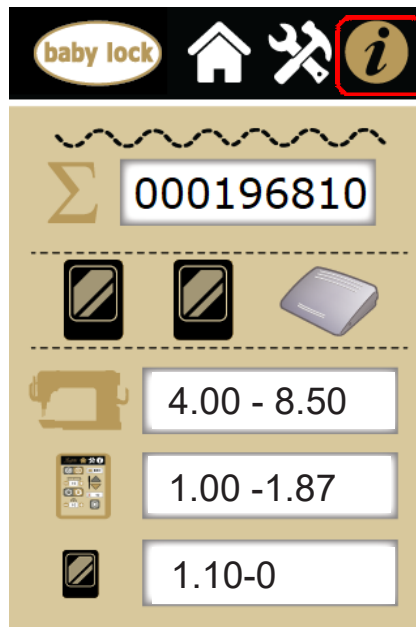


Updating the Baby Lock Regent

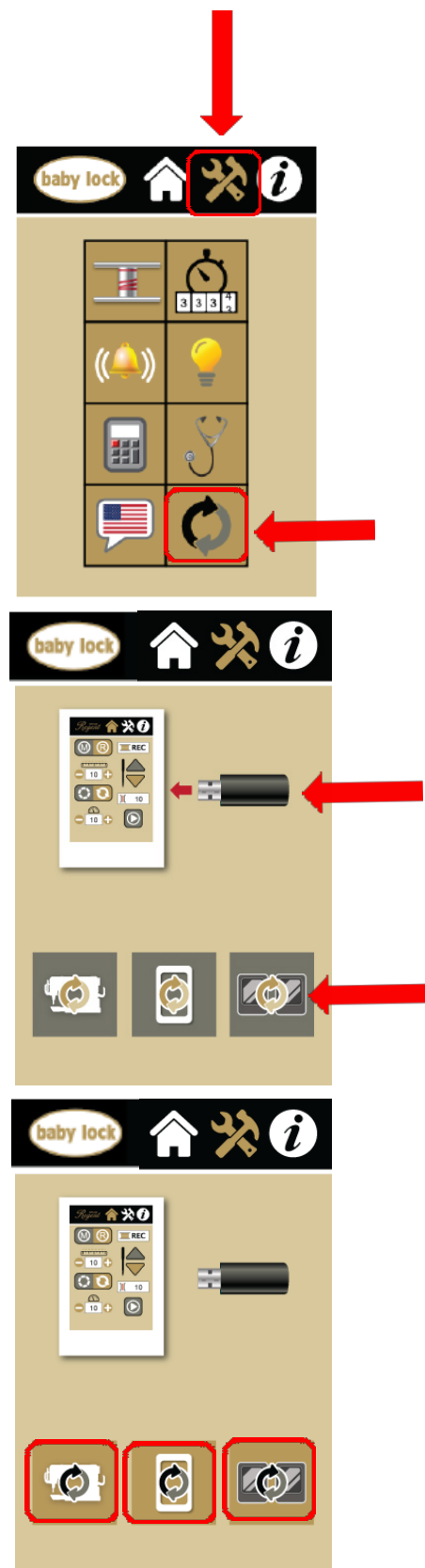
- Select the *Information* key in the top right corner of the screen to display the board and firmware revision numbers for the Regent machine, display, and sensors.
- If the numbers displayed are lower than the the firmware update versions shown in the illustration on the right, install the update(s) to improve the machine's performance.



IMPORTANT: Power down the machine and disconnect the Stitch Harmony table insert interface from the front bobbin area of the machine, then power on and update the machine and/or the display.

Once updated, power down the machine, reconnect the Stitch Harmony interface and power up again. The Stitch Harmony communication can disrupt the programming sequence and can corrupt the program file.

1. Copy the update file(s) to a formatted USB drive.
2. Touch the Tools icon in the toolbar. Then touch the Update icon.
3. Place the USB stick into the port on the right side of the display as shown.
4. Wait for the color of the selection buttons to change from gray to gold.
5. Select the machine, display, or sensor icon for update as needed.
6. When the display update button is selected, the screen will go blank and you will hear three beeps until the update has completed and the screen comes back on.
7. Power down the machine between doing the display and the machine updates.
8. When the machine update button is selected, the display screen stays on and a countdown number appears above the machine update button icon. A signal sounds when the update on the machine is done.
9. Power down the machine between doing the machine and the sensor updates.
10. When the sensor update button is selected, the display screen stays on and a countdown number appears above the sensor update button icon. The update for the sensor is done when the countdown reaches zero.
11. Reboot the machine after installing update(s).



Baby Lock Regent (Model BLRT18) Update History

Regent Machine code (version 8.50):

- Reduces the timeout with the communication between the motion sensor and the machine.
- File Name: Machine.hql
- File Size: 63.1 KB

Regent Machine code (version 8.47):

- Improved the response to a needle up/down press of the foot controller. Also fixes issue with some foot controllers starting the machine on their own.

Regent Sensor code (version 1.10):

- Improves stitch regulation.
- File Name: Sensor.S19
- File Size: 40.5 KB

Regent Display code (version 1.87):

- Prevents using the needle up/down buttons until the machine is fully stopped.
- File Name: DisplayF.S19
- File Size: 1.30 MB

Regent Display code (version 1.84):

- Fixed an issue with cruise speed setting.