

The background of the entire page is a collage of Halloween-themed items. At the top, there is a purple mask with white star patterns around the eye holes and a black ribbon with gold skull patterns. Below it is a yellow mask with a black zigzag stitch pattern around the eye holes. At the bottom, there is a light blue mask with green zigzag stitching around the eye holes and a blue ribbon with silver beads. A purple banner with a black border and white stitching runs horizontally across the middle, behind the 'SEW MORE' text. The text 'SEW MORE' is in a large, teal, outlined font. The word 'SEW' has a small spider on it, and 'MORE' has a small bat on it. The banner also features decorative elements like hands, a rose, and a skull.

SEW MORE

baby lock

FOR THE LOVE OF SEWING



BUTTERFLY MASK

Play with the decorative stitches on your machine to make a butterfly mask! A beginner-friendly project, these masks are simple to make in under an hour. A great project for teaching children how to sew.

Skill Level: Beginner

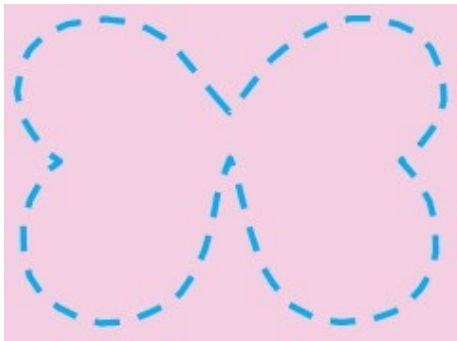
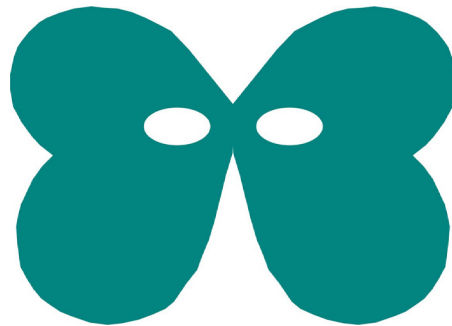
Created By: Carolina Moore from [Always Expect Moore](#)

Supplies:

- 12" x 12" square of stiff felt
- Chalk or fabric marker
- Decorative thread
- 12" dowel
- Assorted Ribbon
- Hot Glue
- Mask template (included on last page of instructions)

Instructions:

1. Cut out the template on the following page using crafting or paper scissors.
2. Trace the template onto the felt with chalk or a fabric marking pen.
3. Cut out the felt on the lines.
4. Thread your machine with decorative thread—this can be a contrasting color, metallic thread, variegated thread, or other fun thread.
5. Select a decorative stitch on your machine.
6. You may want to test the stitch on a scrap piece of felt before stitching on your mask.
7. Using the decorative stitch, stitch on your mask. You can use the edge of your presser foot to guide you around the edge of the butterfly shape and eye holes.
8. If you would like a hand-held mask, you can glue a 12" dowel on one side, if you'd like a hands-free mask, you can cut two 24" lengths of ribbon. If you choose the ribbon option, hand-stitch one end of each ribbon to the back of the mask, 1" in from the indent on each side of the mask.



(continued)



9. To add a decorative tassel, you can cut 6-10 pieces of ribbon between 16-26" in length. Fold in half-ish, then tie a 5" piece of ribbon at the top to secure the ribbons together. Glue or hand-stitch in place.

For other exciting projects like this one, visit Baby Lock at www.babylock.com

©2021 Baby Lock USA. This project may be freely used by individuals for non-commercial purposes. Project instructions may not be sold or distributed without approval from Baby Lock. Baby Lock must be acknowledged as the source of the project instructions through copyright or online link.

Template on next page

