



Baby Lock Endurance 2 (Model BND9-2) Software Update Version 4.60

December 2021

Introduction

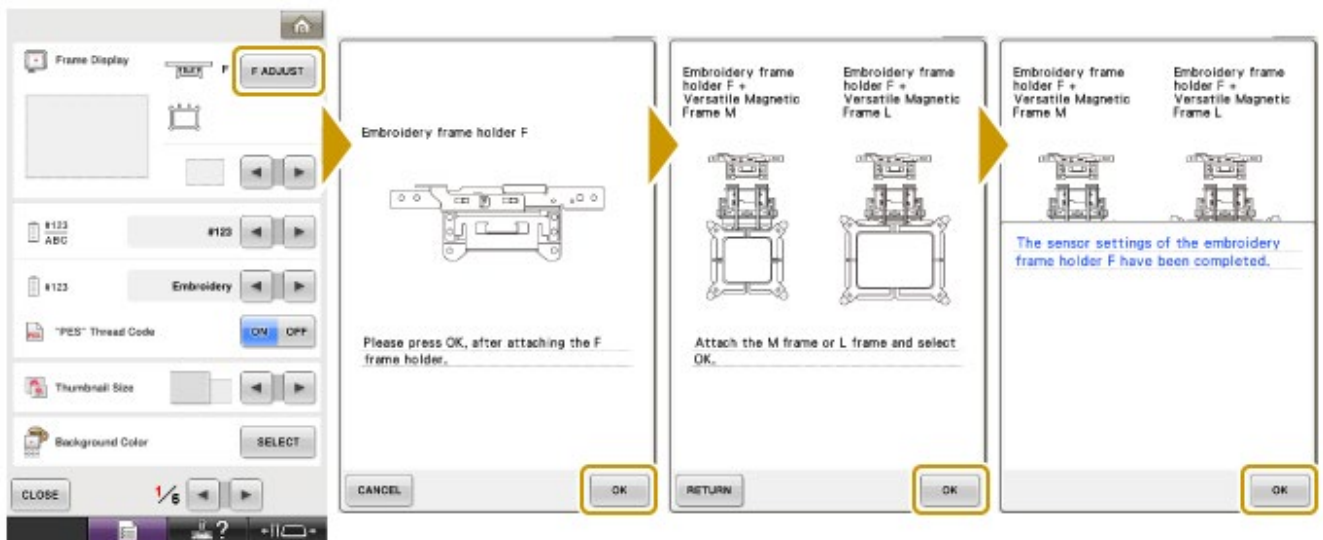
If the software version of your Endurance 2 (Model BND9-2) is earlier than version 4.60, an update program is now available for download to improve its performance.

Version 4.60 update will provide the following changes:

1. Versatile magnetic frame M / L can be recognized on the machine.

To use the above optional embroidery frames, perform the following operation before using the frames.

- 1) Make sure that the machine is updated to version 4.60 or later.
- 2) Attach the embroidery frame holder F to the carriage.
- 3) Press the power switch to turn on your machine, then touch the screen.
- 4) Press Settings key at the bottom of the display. The settings screen appears.
- 5) Touch "F ADJUST" settings key on page 1.
- 6) Make operations in accordance with the directions on the screen.
- 7) Sensor adjustment for frame & frame holder will be automatically carried out and completed if they are correctly attached to your machine.



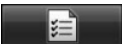




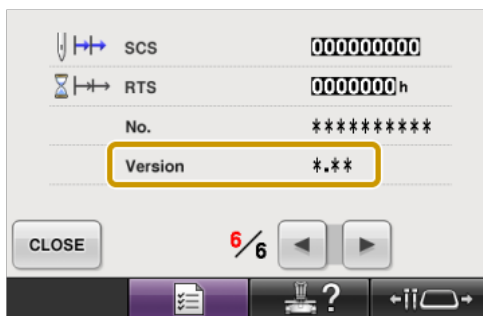
Note:

This operation is needed only for the initial time when the versatile magnetic frame M or the versatile magnetic frame L is being used with embroidery frame holder F.

2. Improved the thread color display on the screen when using a pattern data that contains the embroidery thread brands that are not defined in the embroidery machine.

To confirm the software version of your BND9-2

1. Press the power switch to turn on your machine. The LCD screen comes on.
2. Touch anywhere on the initial screen and then touch “OK”.
3. Touch  (Settings key) at the bottom of the LCD display. The Settings screen appears.
4. Switch screens by using  (Previous page key) and  (Next page key) to display the software version.



Note:

The number of pages in the Settings screen will vary depending on the program version in your machine.

5. If the version shown on your machine is already **Version 4.60** or later, it is not necessary to update your machine with the program on this page.

How to download the update program

1. Click the Details link on the web page for your machine. Click on the Manuals and Updates link, then select Download to download the Version 4.60 zipped update file.
2. Right-click on the downloaded zipped update file, select “Extract All”, and follow the steps to extract the files. There will be two extracted files: these instructions and the actual update file (bnd9_2V460tac_Web.upf, size: 87.7 MB).



How to update your machine's software

You must use a **formatted** USB Flash drive to update your machine's software.

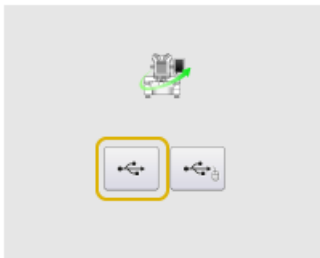
***** NOTE *****

- Do not turn off your machine while the machine is saving the update software to itself. If the machine's power is turned off while saving the update software, it may result in damage to the machine.
- Use a 4GB or larger USB Flash drive when installing the software to the machine.
- Check that no data except for the update file is saved on the **formatted** USB Flash drive, before beginning update.

1. Insert the USB Flash drive into the USB port on the computer.
2. Copy only the update file to the USB Flash drive.
3. Safely remove the USB Flash drive from the USB port on the computer.
4. With the machine off, press the automatic threading button while turning the main power to on.

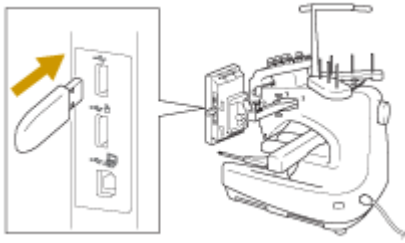


5. The following screen appears on the LCD. Touch the USB media key.





6. Insert the USB Flash drive into the USB port on the machine.



7. Touch LOAD key.



8. When the message "Upgrade complete" appears, the update file has been loaded.



9. Turn the machine off.
10. Remove the USB Flash drive from the USB port on the machine.
11. Turn the machine on.
12. Your machine's software has been updated to version 4.60.



Baby Lock Endurance 2 (Model BND9-2) Update History

➤ **Version 4.50 update provided the following changes**

1. The optional magnetic sash frame (ENMF360) can be used on the machine.
The maximum embroidery area available for this machine is 300mm x 200 mm (11-3/4 inches x 7-7/8 inches).

➤ **Version 4.44 update provided the following changes**

1. Satin stitch quality has been improved.

➤ **Version 4.41 update provided the following changes**

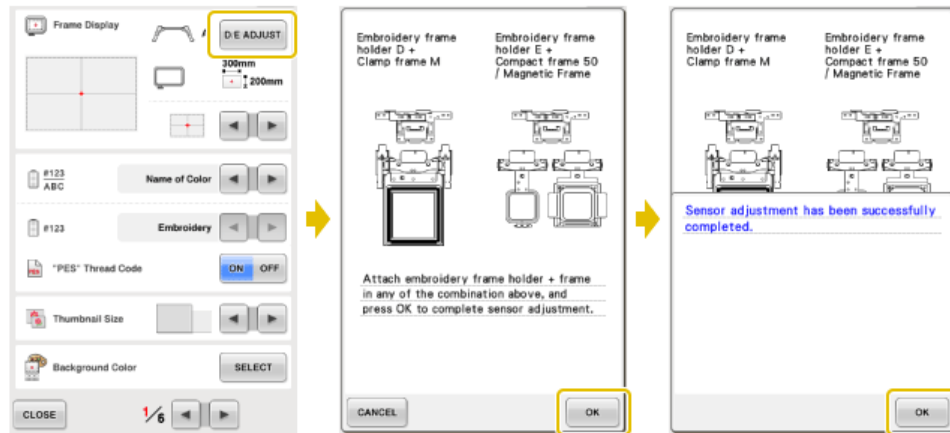
1. Adjusted the machine reading the available embroidery area.

➤ **Version 4.40 update provided the following changes**

1. The following optional embroidery frames can be used on the machine.
 - Clamp frame M (Model number: ENCF100)
 - Compact Embroidery Hoop (Model number : ALF44, ALF50, ALF70, ALF74)
 - Magnetic frame (Magnetic frame will be available in 2017 autumn.)
- ✧ **D/E ADJUST** settings will be added on page 1 in the settings screen after updating the machine's software. To use the above optional embroidery frames, perform the following operation before using the frames.
 - 1) Make sure that the machine is updated to version 4.40.
 - 2) Touch the Settings key to display the settings screen.
 - 3) Touch D/E ADJUST settings key on page 1.
 - 4) Make operations in accordance with the directions on the screen.



- 5) Sensor adjustment for frame and frame holder will be automatically carried out and completed if they are correctly attached to your machine.



Note:

This operation is needed only for the initial time when above frame is being used with embroidery frame holder D or E.

➤ **Version 4.31 update provided the following changes**

1. The following optional embroidery frame can be used on the machine.
 - Embroidery Sleeve Hoop (Model Number: ENSF)
2. The display of the embroidery area on the pattern display screen will be indicated with the connection of the embroidery frame holder and the embroidery frame when installed on the machine.
The guide settings on page 1 in the settings screen will be also displayed when the embroidery frame holder and embroidery frame are connected.

➤ **Version 4.25 update provided the following changes**

1. Improvement for measures against electrostatic noise.

➤ **Version 4.24 update provided the following changes**

1. Improved functionality of the following feature.
 - Running Stitch uniformity with frame pattern enlargement.
2. Added **ALL CLEAR** key to delete all the specified colors from the custom thread palette.



➤ **Version 4.22 update provided the following changes**

1. Fixed minor issues.

➤ **Version 4.21 update provided the following changes.**

1. Fixed the situation where the LED pointer was not turned on when moving the needle back using the Forward/Backward Stitch Key after the error message for checking the upper or bobbin thread was displayed.
2. Fixed the situation where the machine may not work correctly after the error message was displayed by selecting the appliqué setting.
3. Improved so that the embroidery pattern moves by 0.1 mm when the arrow keys are pressed on the pattern editing screen. When you press and hold the arrow keys, the pattern moves by 5 mm.

➤ **Version 4.20 update provided the following changes.**

1. Fixed the situation where the embroidery pattern was not rotated 180 degrees if the embroidery frame was changed from a cap frame to a different type of frame or from a different type of frame to a cap frame when the machine finished sewing the pattern using the Link function.
2. The starting/ ending position settings are changed to the center of pattern when using Clamp Frame SR or Clamp Frame SL.