



# Baby Lock Enterprise (Model BNT10L) Software Update Version 4.50

December 2021

## Introduction

If the software version of your Enterprise (Model BLT10L) is earlier than version 4.50, an update program is now available for download to improve its performance.

**Note:**

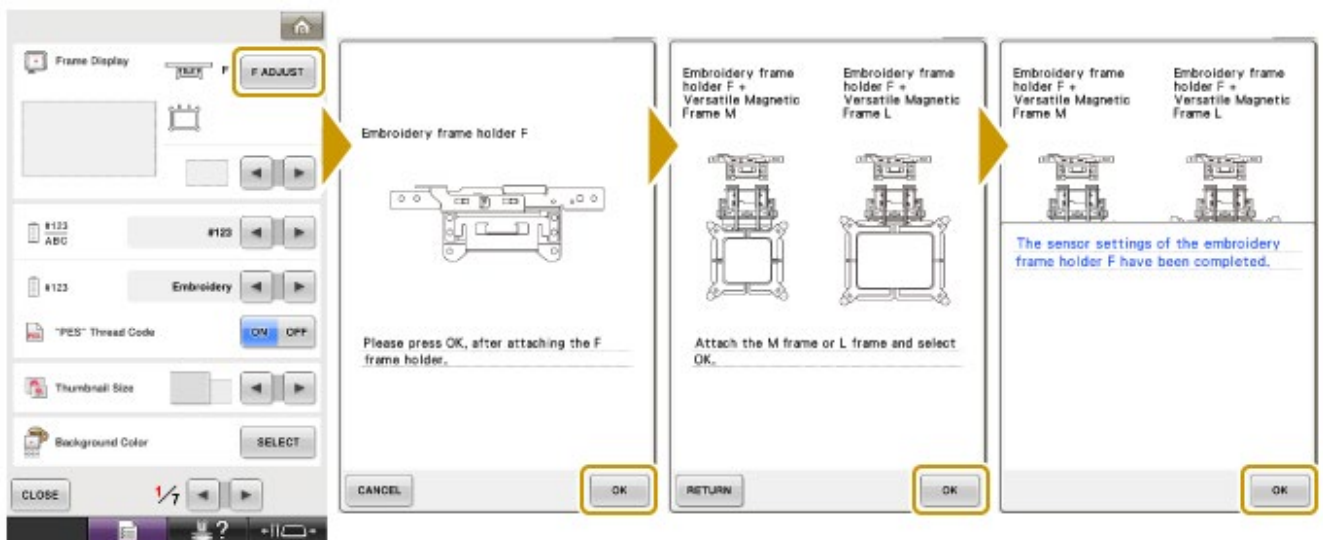
**This update is available for machines with and without the Embroidery Upgrade I (BNT10-U)**

## Version 4.50 update will provide the following changes:

1. Versatile magnetic frame M / L can be recognized on the machine.

To use the above optional embroidery frames, perform the following operation before using the frames.

- 1) Make sure that the machine is updated to version 4.50 or later.
- 2) Attach the embroidery frame holder F to the carriage.
- 3) Press the power switch to turn on your machine, then touch the screen.
- 4) Press Settings key at the bottom of the display. The settings screen appears.
- 5) Touch "F ADJUST" settings key on page 1.
- 6) Make operations in accordance with the directions on the screen.
- 7) Sensor adjustment for frame & frame holder will be automatically carried out and completed if they are correctly attached to your machine.





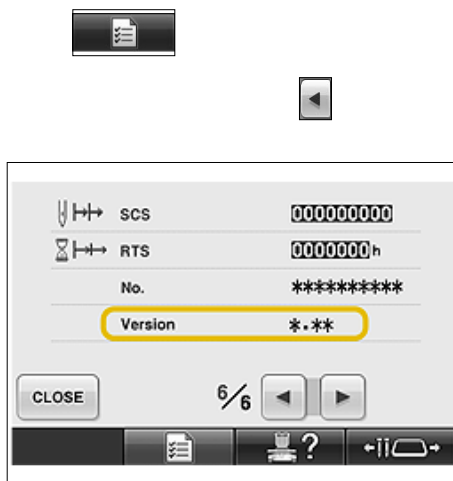
Note:

This operation is needed only for the initial time when the versatile magnetic frame M or the versatile magnetic frame L is being used with embroidery frame holder F.

2. Improved the thread color display on the screen when using a pattern data that contains the embroidery thread brands that are not defined in the embroidery machine

## To confirm the software version of your BNT10L

1. Press the power switch to turn on your machine. The LCD screen comes on.
2. Touch anywhere on the initial screen, and then touch “OK”.



5. If the version shown on your machine is already **Version 4.50** or later, it is not necessary to update your machine with the program on this page.

## How to download the update program

1. Click the Details link on the web page for your machine. Click on the Manuals and Updates link, then select Download to download the Version 4.50 zipped update file.
2. Right-click on the downloaded zipped update file, select “Extract All”, and follow the steps to extract the files. There will be two extracted files: these instructions and the actual update file (bnt10V450tacWeb.upf, size: 90.5 MB).

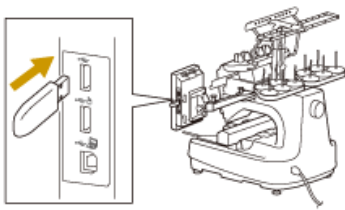
## How to update your machine's software

You must use a **formatted** USB Flash drive or a computer to update your machine's software.

**\*\*\* NOTE \*\*\***

- Do not turn off your machine while the machine is saving the update software to itself. If the machine's power is turned off while saving the update software, it may result in damage to the machine.
- When using a USB Flash drive to update the machine's software, check that no data except for the update file is saved on the **formatted** USB Flash drive being used before beginning update.

1. Insert the USB Flash drive into the USB port on the computer.
2. Copy only the update file to the USB Flash drive.
3. Safely remove the USB Flash drive from the USB port on the computer.





9. Turn the machine off.
10. Remove the USB Flash drive from the USB port on the machine.
11. Turn the machine on.
12. Your machine's software has been updated to version 4.50.

## Baby Lock Enterprise (Model BNT10L) Update History

### ➤ Version 4.40 update provided the following changes.

1. The optional Magnetic Sash frame (ENMF360) can be used on the machine.  
The maximum embroidery area available for this machine is 360mm x 200 mm (14 inches x 7-7/8 inches)
2. Satin stitch quality has been improved.

### ➤ Version 4.31 update provided the following changes.

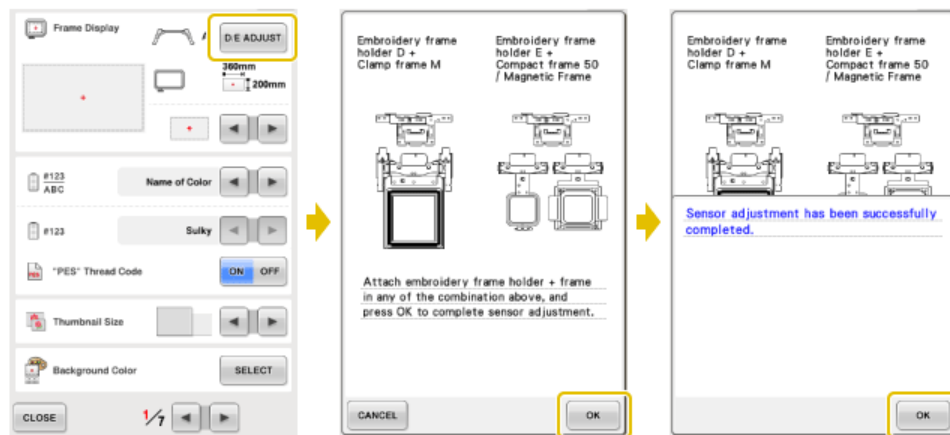
1. Adjusted the machine reading the available embroidery area.

### ➤ Version 4.30 update provided the following changes

1. The following optional embroidery frames can be used on the machine.
  - Clamp frame M (Model number: ENCF100)
  - Compact Embroidery Hoop (Model number: ALF44, ALF50, ALF70, ALF74)
  - Magnetic frame (Magnetic frame will be available in 2017 autumn.)

✧ **D/E ADJUST** settings will be added on page 1 in the settings screen after updating the machine's software. To use the above optional embroidery frames, perform the following operation before using the frames.

- 1) Make sure that the machine is updated to version 4.30.
- 2) Touch the Settings key to display the settings screen.
- 3) Touch D/E ADJUST settings key on page 1.
- 4) Make operations in accordance with the directions on the screen.



### **Note:**

*This operation is needed only for the initial time when above frame is being used with embroidery frame holder D or E.*



➤ **Version 4.21 update provided the following changes**

1. The following optional embroidery frame can be used on the machine.
  - Embroidery Sleeve Hoop (Model number: ENSF)
2. The display of the embroidery area on the pattern display screen will be indicated with the connection of the embroidery frame holder and the embroidery frame when installed on the machine.  
The guide settings on page 1 in the settings screen will be also displayed when the embroidery frame holder and embroidery frame are connected.

➤ **Version 4.15 update provided the following changes**

1. Improvement for measures against electrostatic noise.

➤ **Version 4.14 update provided the following changes**

1. Improved functionality of the following feature.
  - Running Stitch uniformity with frame pattern enlargement.
2. Added **ALL CLEAR** key to delete all the specified colors from the custom thread palette.

➤ **Version 4.12 update provided the following changes**

1. Improved connectivity and angle of sewing for three or more embroidery patterns that are rotated using the camera function.  
*(\* This feature is only available for Embroidery Upgrade I (BNT10-U (Sold separately)) users.)*

➤ **Version 4.11 update provided the following changes.**

1. Fixed the situation where the machine may not work correctly after the error message was displayed by selecting the appliqué setting.

➤ **Version 4.10 update provided the following changes.**

1. The following optional embroidery frame can be used on the machine.
  - Clamp frame (24 mm x 45 mm , 7/8 inch x 1 3/4 inches)

2. Fixed the situation where the embroidery pattern was not rotated 180 degrees if the embroidery frame was changed from a cap frame to a different type of frame or from a different type of frame to a cap frame when the machine finished sewing the pattern using the Link function.

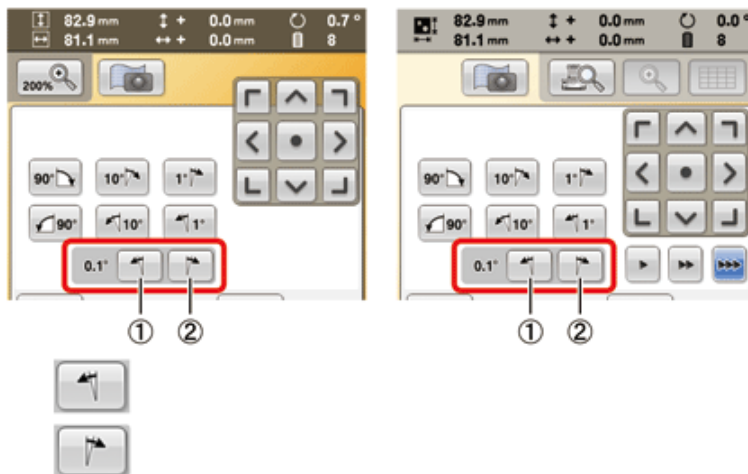
➤ **Version 4.01 update provided the following changes.**

1. Fixed the situation where the machine may not cut short jump stitches when "thread trimming" setting is "ON" in the Settings screen.

**Note:**

To cut short jump stitches, use embroidery data created with Palette 9 (.pes file version is 9.0 or later).

2. Fixed the situation where the machine may display the enlarged preview image of the pattern at the wrong location on the screen when the pattern is positioned on the screen displaying the scanned fabric image as a background.  
(\* This problem relates to users of the Embroidery Upgrade I (BNT10-U) only)
3. Improved so that the embroidery pattern moves by 0.1mm when the arrow keys are pressed on the pattern editing screen.  
When you keep pressing the arrow keys, the pattern moves by 5mm.



➤ **Version 4.00 update provided the following changes.**

1. The pause marks are displayed where the machine will stop for the appliqué patterns at the thread color sequence display.
2. Improved so that the appliqué patterns with "APPLIQUE MATERIAL", "APPLIQUE POSITION" or "APPLIQUE" are assigned to the same needle bar.



3. Changed so that the range of "Appliqué Distance" is between 0.0 mm and 10.0 mm (between 0" and 0.4") in the settings screen.

➤ **Version 3.12 update provided the following changes.**

1. Fixed the situation where the machine may not work correctly when selecting the next section of the pattern when embroidering a jumbo frame pattern.
2. Fixed the situation where the machine may reboot when canceling the message, which is displayed when resuming the connecting embroidery patterns using camera function.
3. Fixed the situation where the key of connecting patterns, which is displayed, may respond when the embroidery appliqué key or embroidery basting key is selected.

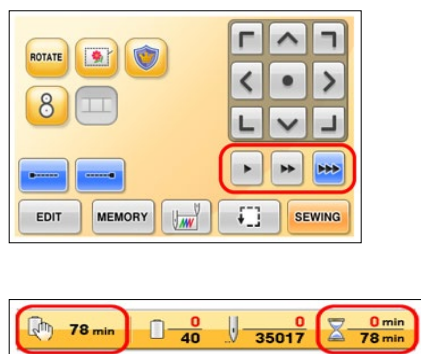
➤ **Version 3.10 update provided the following changes.**

1. Improved procedures for connecting embroidery patterns using camera function.  
(\* This feature is only available for Embroidery Upgrade I (BNT10-U (Sold separately)) users.)

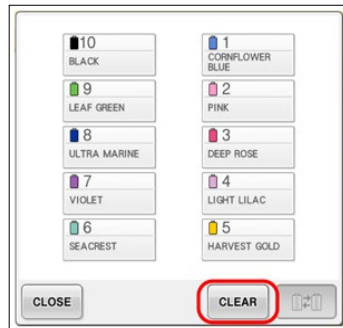
**Note:**

The operation manual for the BNT10-U has been revised to show the improved procedure.  
Download the revised manual to refer to the improved procedure.

2. Improved the Stitch Re-calculator feature for built-in patterns.  
(\* This feature is specific to Embroidery Upgrade I (BNT10-U (Sold separately)) users.)
3. Improved the performance for displaying the image on the LCD.  
Improves response time when touching keys on screen.
4. Reduced the time for tracing corners of pattern when checking the embroidery area.







8. Revised the wording of messages (Portuguese).

➤ **Version 3.00 update provided the following changes.**

1. Added the certification screen for Embroidery Upgrade I (BNT10-U (Sold separately)) to the Settings screen.
  - Settings screen
    - New settings pages/ keys for the Embroidery Upgrade I (BNT10-U) have been added to the Settings screen.
    - New keys for new feature are activated when the Embroidery Upgrade I (BNT10-U) is purchased and Certification has been completed on machine.
2. The spool thread indicator is turned off, after pressing the automatic needle threading button.

➤ **Version 2.02 update provided the following changes.**

1. Revised wording of an error message (French).