



# Baby Lock Meridian (Model BLMA) Software Update Version 1.11

March 2022


## Introduction

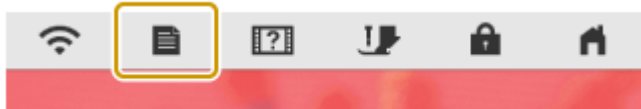
If the software version of your Meridian (Model BLMA) is earlier than version 1.11, an update program is now available for download to improve its performance.



## Version 1.11 update will provide the following changes:

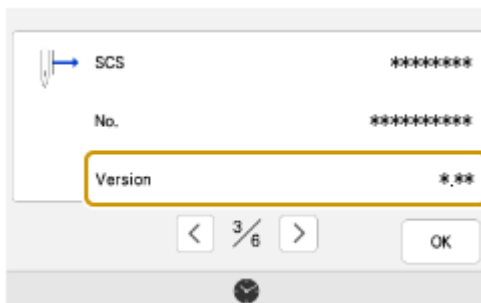
1. Ensure proper detection of available Wi-Fi channels.

## How to confirm the software version of your BLMA

1. Press the power switch to "|" to turn on your machine.
2. If the opening movie is played, touch anywhere on the LCD screen.
3. Press  (Machine setting key) to display the machine's settings screen.



4. The machine's settings screen appears.
5. Switch the settings screens by using  (Previous page key) or  (Next page key) to display the machine's program version.
6. Check the version shown on the display as described below.



- If "**Version**" is already "**1.11**" or later, it is not necessary to update your machine.



- If "**Version**" is lower than "**1.11**", update your machine's software with the Version 1.11 update file.

7. Turn off the machine.

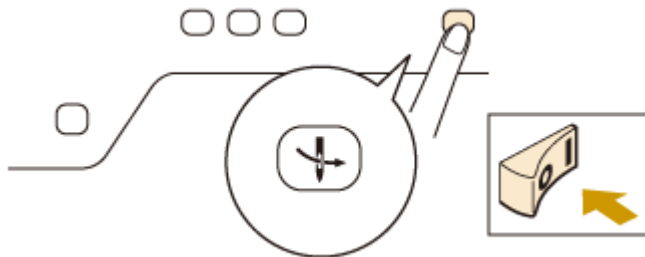
## How to update your machine's software



You can use a **formatted** USB Flash drive to update your machine's software.

### **\* \* \* NOTE \* \* \***

- Do not turn off your machine while the machine is saving the update software to itself. If the machine's power is turned off while saving the update software, it may result in damage to the machine.
- Use a 4GB or larger USB flash drive when updating the machine.
- Check that no data except for the update (W\_V111\_T\_P.upf) file is saved on the **formatted** USB Flash drive, before beginning update.

1. Insert the USB Flash drive into the USB port on the computer.
2. Copy only the update file to the USB Flash drive.
3. Safely remove the USB Flash drive from the USB port on the computer.
4. While pressing the "Automatic Threading" button, turn the main power to ON.



5. The upgrade screen will appear on the LCD. Press  or  .

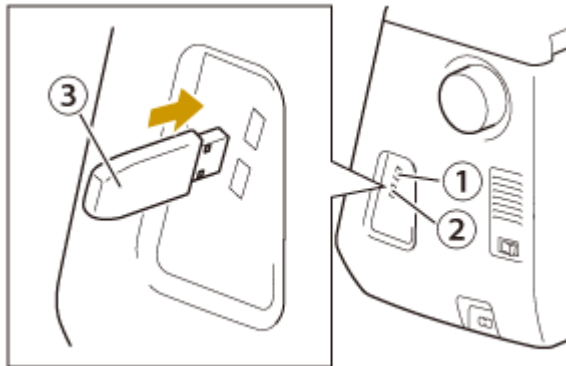


: Press this key to load the program file from the USB flash drive plugged into the USB port for media



: Press this key to load the program file from the USB flash drive plugged into the USB port for mouse

6. Insert the USB flash drive into the USB port on the machine corresponding to the USB key pressed in step 5.



① USB port for media

② USB port for mouse

③ USB flash drive

7. Press Load key.



Press LOAD after connecting the USB media containing the upgrade file.



8. When the message "Upgrade complete" appears, the update file has been loaded.



Upgrade complete.

9. Remove USB Flash drive from the USB port on the machine.
10. Turn the machine off and on again.
11. Your machine's software has been updated to version 1.11.

## Baby Lock Meridian (Model BLMA) Update History

### ➤ Version 1.10 update provided the following changes:

1. The optional magnetic frame EMF180 can be recognized on the machine.  
The maximum embroidery area available is 180mm x 130 mm (7 inches x 5 inches).
2. Improved machine's functionality of the thread color sequence display on the screen when using a .pes file that contains user-defined colors.



➤ **Version 1.04 update provided the following changes:**

1. Improved machine's functionality to move needle forward or backward through the stitching sequence using the Forward/Backward keys.
2. Improved machine's functionality of pattern preview function.

➤ **Version 1.03 update provided the following changes:**

1. Improved machine's functionality for the following features.
  - IQ Designer
  - Thread trimming function of jump stitch
  - Receiving data from IQ Intuition Positioning App
  - Color Visualizer function
  - Embroidery editing function
  - Calibration screen for LED pointer position
2. The thread brand name "Simplicity Pro" has been changed to "PaceSetter Pro".

➤ **Version 1.02 update provided the following changes:**

1. Improves display alignment of embroidery pattern with a background image on the real preview screen.