

*Spirit*TM

Quick Reference Guide

Model BLPY



FOR THE LOVE OF SEWING

To register your machine warranty and receive Baby Lock product updates and offers, go to babylock.com/profile. If you have questions with registration, visit your Authorized Baby Lock Retailer.

Baby Lock Consumer Helpline: 800-313-4110

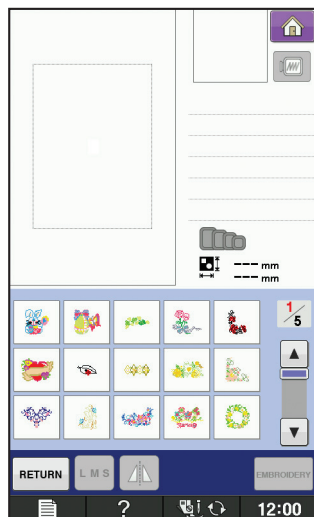
www.babylock.com

Refer to the instruction and reference guide for detailed instruction.
Also, there are differences in the keys and screens depending on the display language. In this guide, English screens are used for basic explanations.

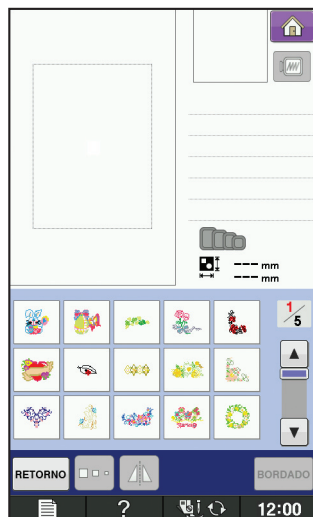
Para obtener instrucciones más detalladas, consulte el Manual de instrucciones.
Además, dependiendo del idioma visualizado algunos botones y pantallas podrán ser diferentes. En esta guía, para las explicaciones básicas se emplean pantallas en inglés.

Pour des instructions détaillées, reportez-vous au manuel d'instructions.
Par ailleurs, il y a des différences dans les touches et les écrans en fonction de la langue d'affichage.
Dans ce guide, les explications de base utilisent les écrans anglais.

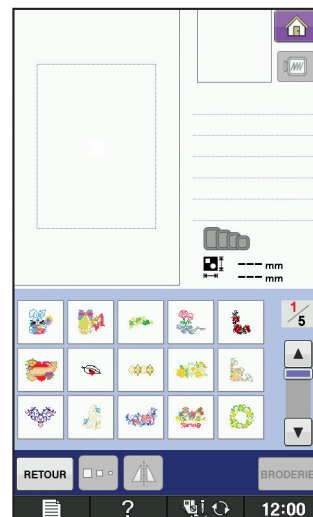
<English display>
<Visualización en inglés>
<Affichage en anglais>



<Example: Spanish>
<Ejemplo: Español>
<Exemple : espagnol>



<Example: French>
<Ejemplo: Francés>
<Exemple : français>



Contents

Winding the Bobbin	2
Setting the Bobbin	4
Upper Threading	5
Preparing to Embroider	6
Selecting Stitch Patterns	8
Summary of Stitch Patterns	12
Embroidery Pattern Color Change Table	21
Color Thread Conversion Chart	47

Contenido

Devanado de la bobina	2
Colocación de la bobina	4
Hilo superior	5
Preparativos para bordar	6
Selección de tipos de puntada	8
Resumen de tipos de puntada	12
Tabla de cambio de color para patrones de bordado	21
Tabla de conversión de hilos de color	47

Table des matières

Bobinage de la canette	2
Mise en place de la canette	4
Enfilage supérieur	5
Préparation de la broderie	6
Sélection des configurations de point	8
Sommaire des motifs de point	12
Tableau de changement de couleur des motifs de broderie	21
Tableau de conversion des fils de couleur	47

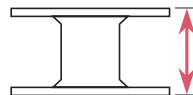
Winding the Bobbin

Devanado de la bobina

Bobinage de la canette

Follow the numbered steps below in order. Refer to the instruction and reference guide for detailed instruction.
Realice los siguientes pasos numerados en el orden indicado. Para obtener instrucciones más detalladas, consulte el Manual de instrucciones.
Suivez les étapes numérotées ci-dessous dans l'ordre. Pour des instructions détaillées, reportez-vous au manuel d'instructions.

Use only the enclosed bobbin or bobbins of the same type.
Utilice sólo la bobina incluida o bobinas del mismo tipo.
N'utilisez que la canette fournie ou des canettes du même type.



11.5 mm (approx. 7/16 inch)
(aprox. 7/16 pulg.)
(env. 7/16 po)

◆ Using the Supplemental Spool Pin

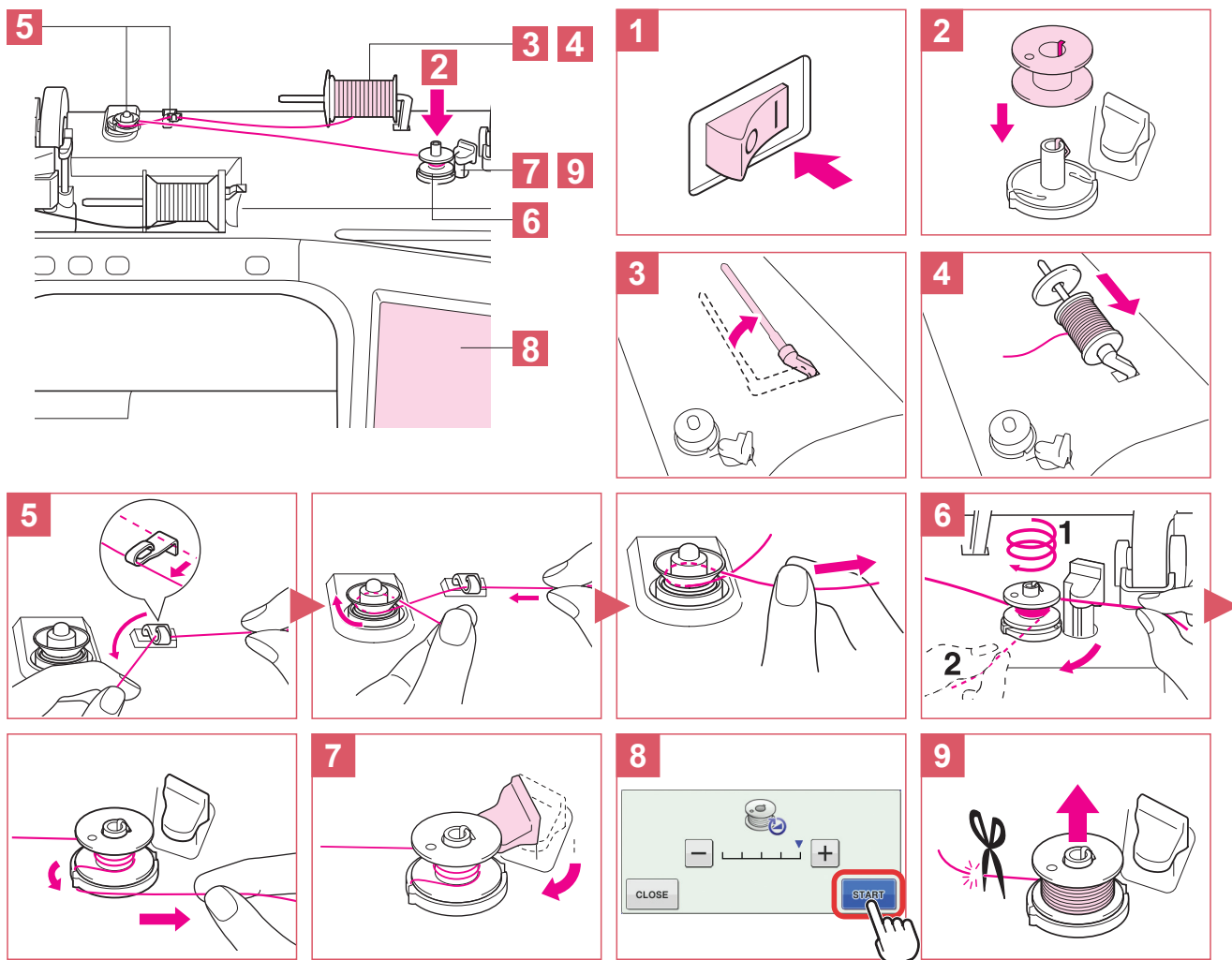
You can wind the bobbin during sewing.

◆ Uso del portacarrete suplementario

Puede devanar la bobina mientras está cosiendo.

◆ Utilisation du porte-bobine supplémentaire

Vous pouvez bobiner la canette pendant la couture.



◆ Using the Spool Pin

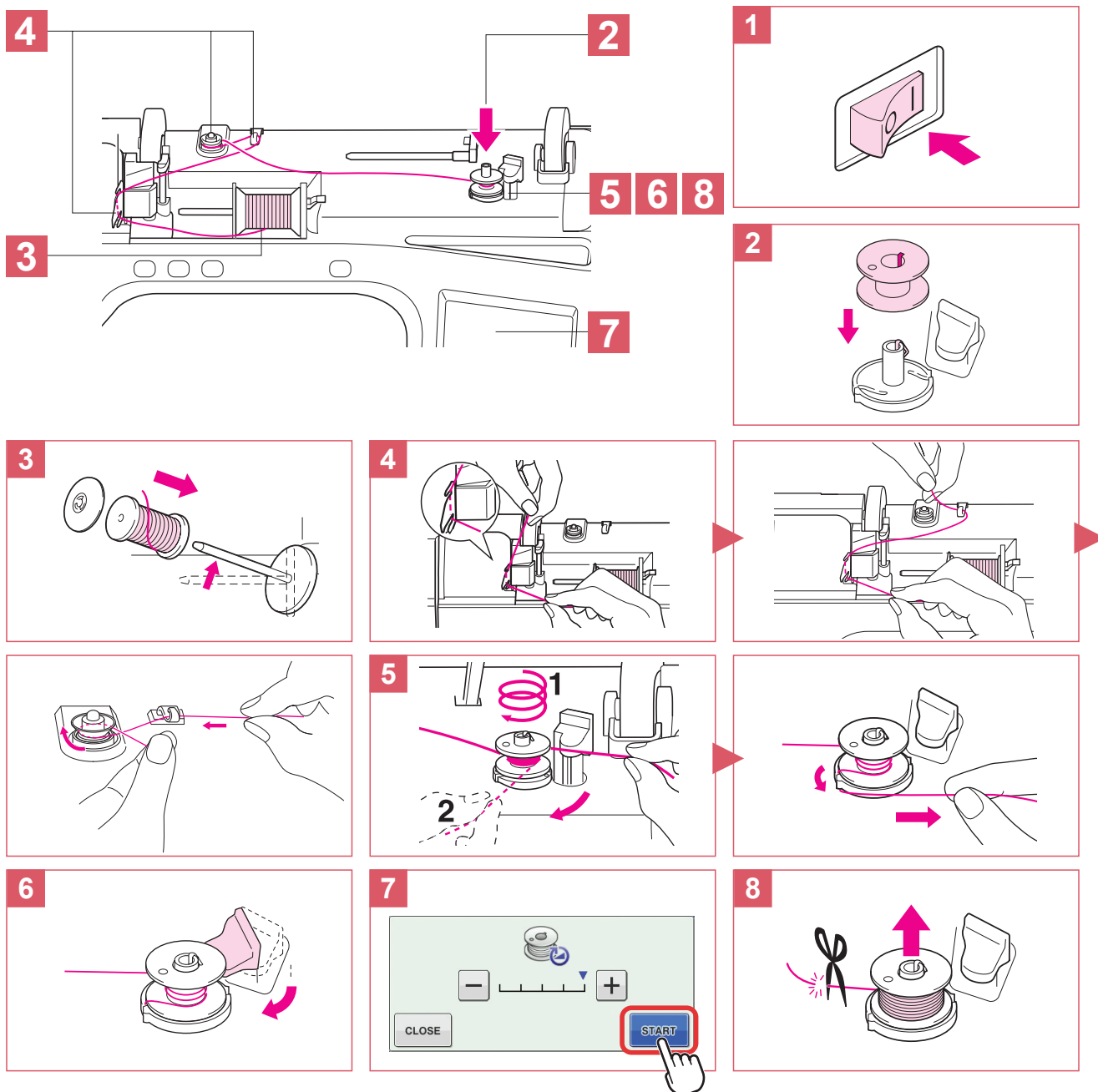
You can use the main spool pin to wind the bobbin before sewing.

◆ Uso del portacarrete

Puede utilizar el portacarrete principal para devanar la bobina antes de coser.

◆ Utilisation du porte-bobine

Vous pouvez bobiner la canette avant de coudre à l'aide du porte-bobine principal.

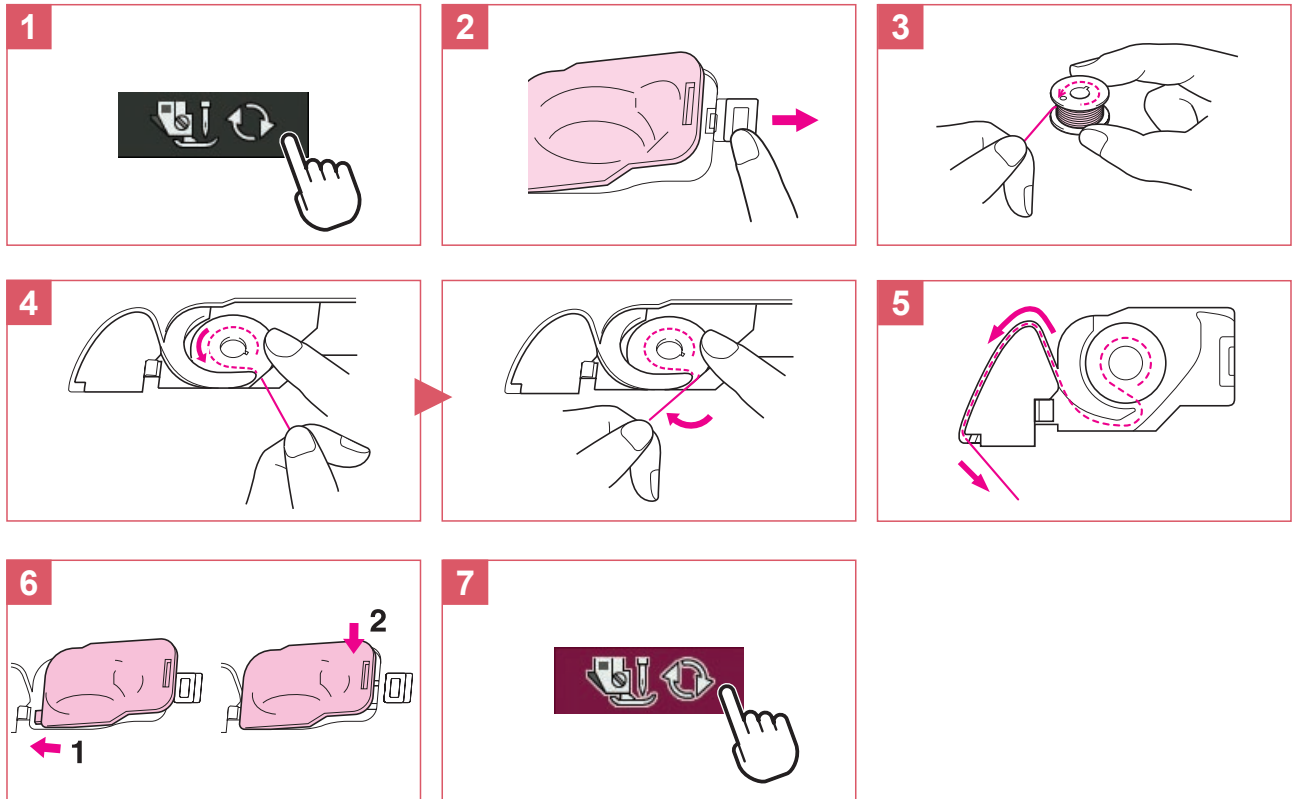


Setting the Bobbin

Colocación de la bobina

Mise en place de la canette

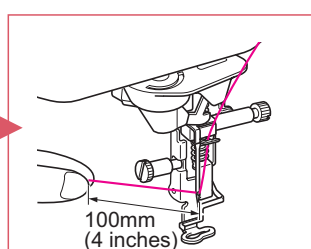
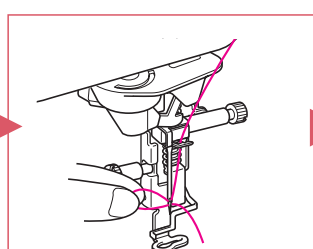
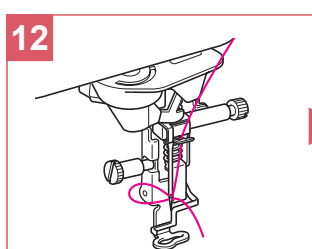
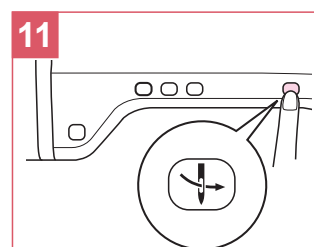
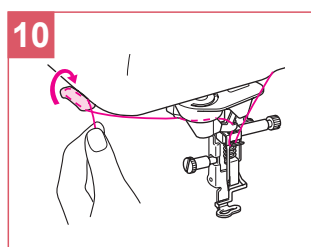
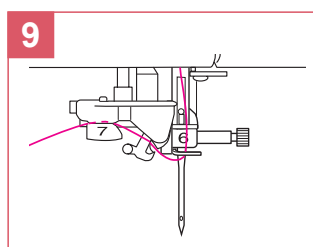
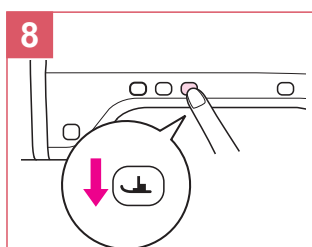
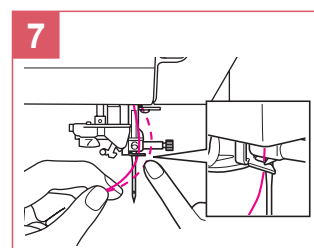
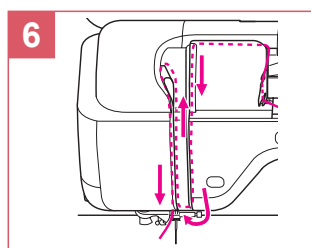
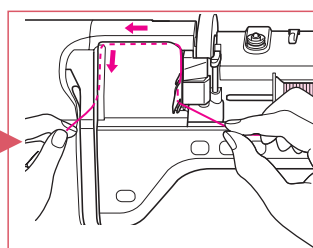
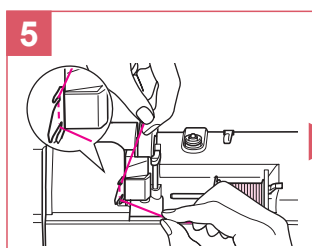
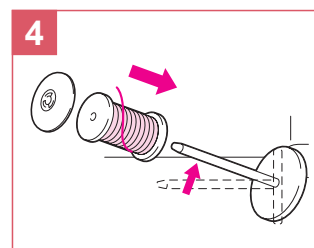
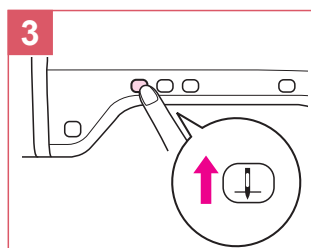
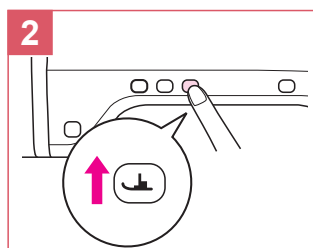
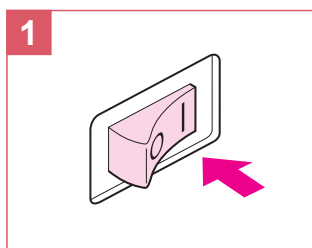
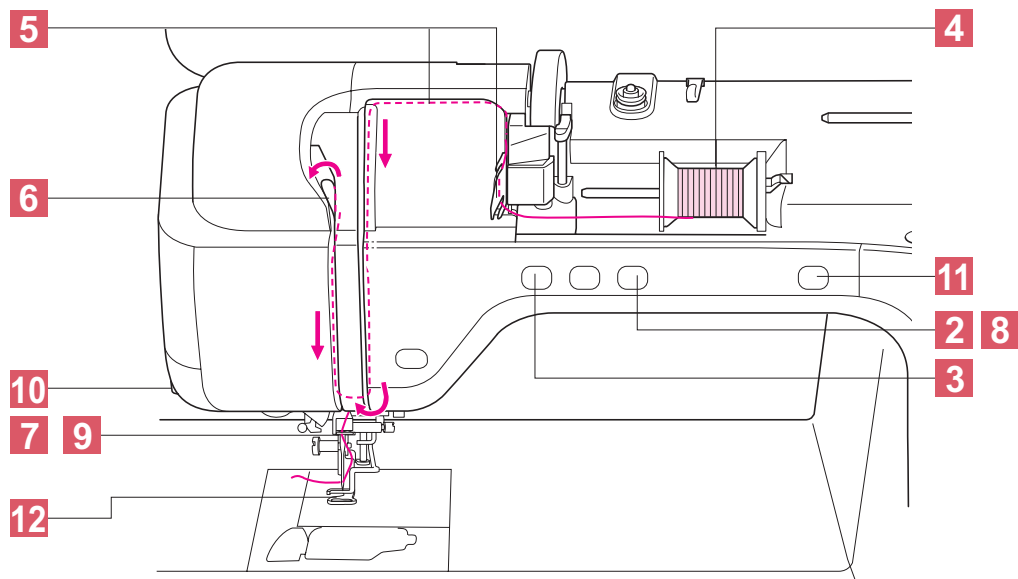
Refer to the instruction and reference guide for detailed instruction.
Para obtener instrucciones más detalladas, consulte el Manual de instrucciones.
Pour des instructions détaillées, reportez-vous au manuel d'instructions.



Upper Threading

Hilo superior

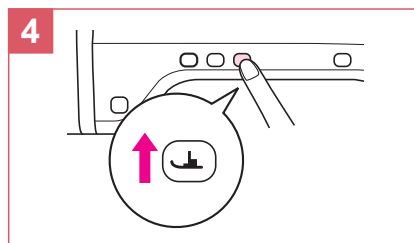
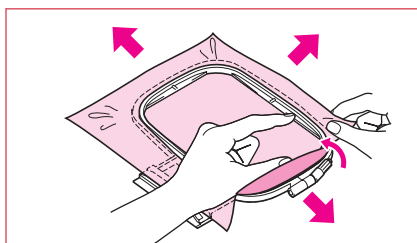
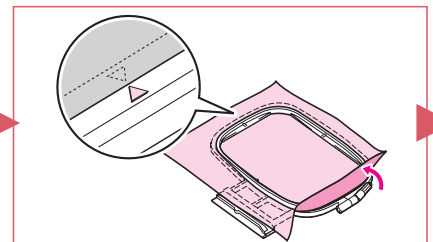
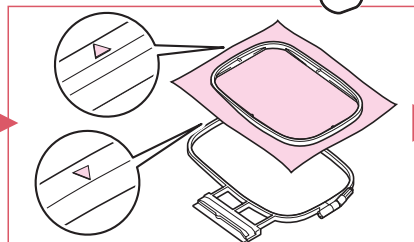
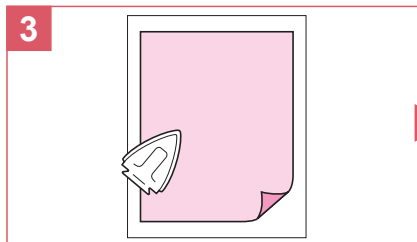
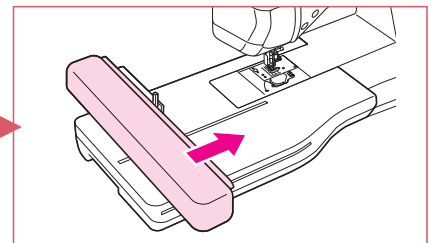
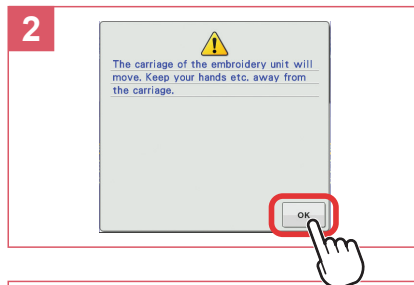
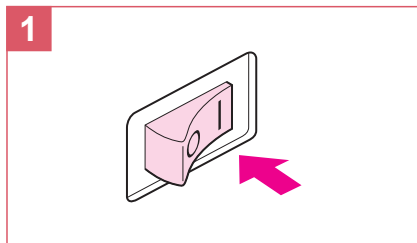
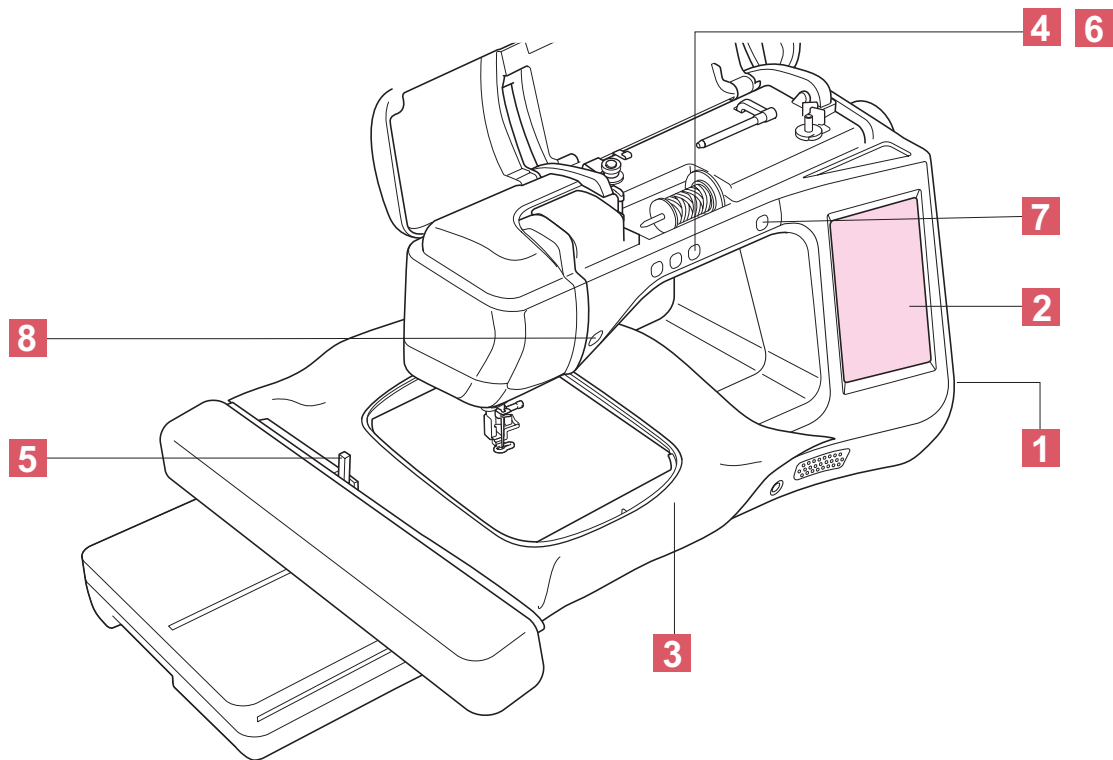
Enfilage supérieur

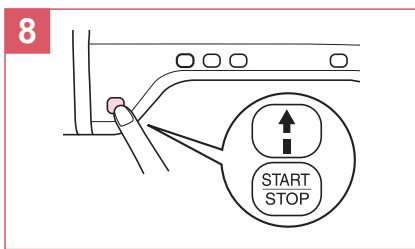
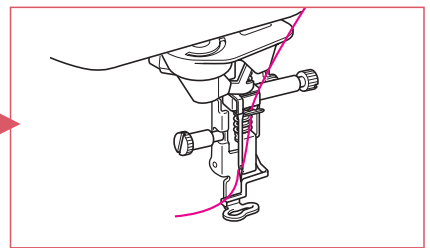
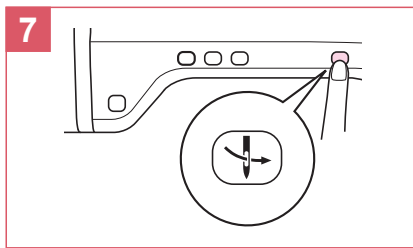
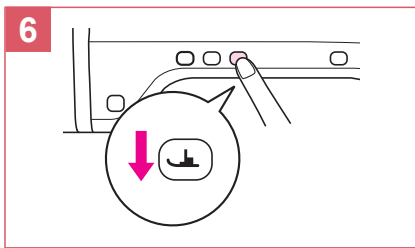
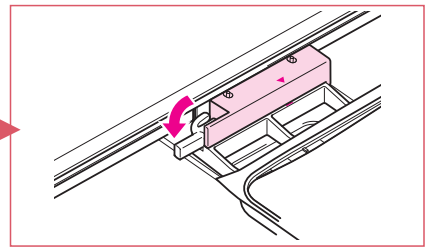
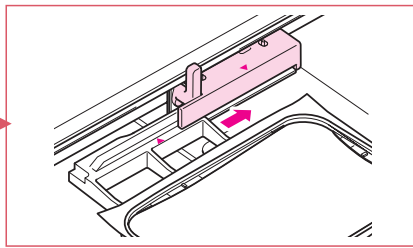
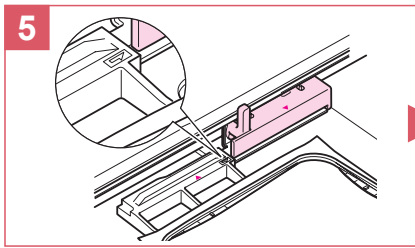


Preparing to Embroider

Preparativos para bordar

Préparation de la broderie





Selecting Stitch Patterns

Selección de tipos de puntada

Sélection des configurations de point


◆ LCD Flow Chart

◆ Diagrama de flujo del LCD

◆ Organigramme de l'écran à cristaux liquides




◆ Embroidery Patterns


When the machine is turned on, the opening movie is played. Touch the screen to display the home screen.
Press  to display the Embroidery Screen.

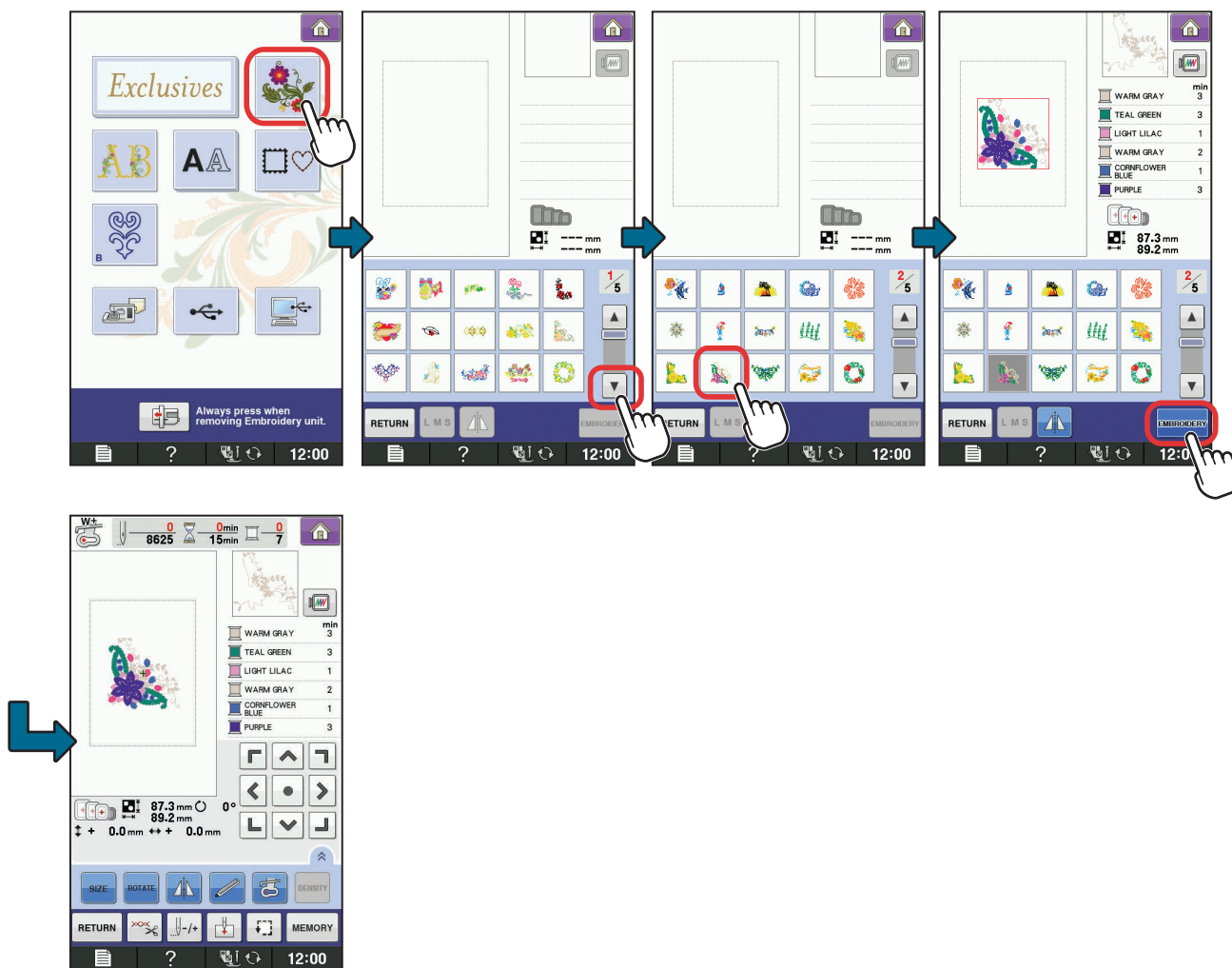


◆ Patrones de bordado

Cuando se activa la máquina, se reproduce el vídeo de presentación. Toque la pantalla para visualizar la pantalla inicial. Pulse  para visualizar la pantalla de bordado.

◆ Motifs de broderie

Quand la machine est mise sous tension, la vidéo de démarrage commence. Touchez l'écran pour afficher la page d'accueil. Appuyez sur  pour afficher l'écran Broderie.



◆ Embroidery Edit Patterns

◆ Patrones de edición de bordado

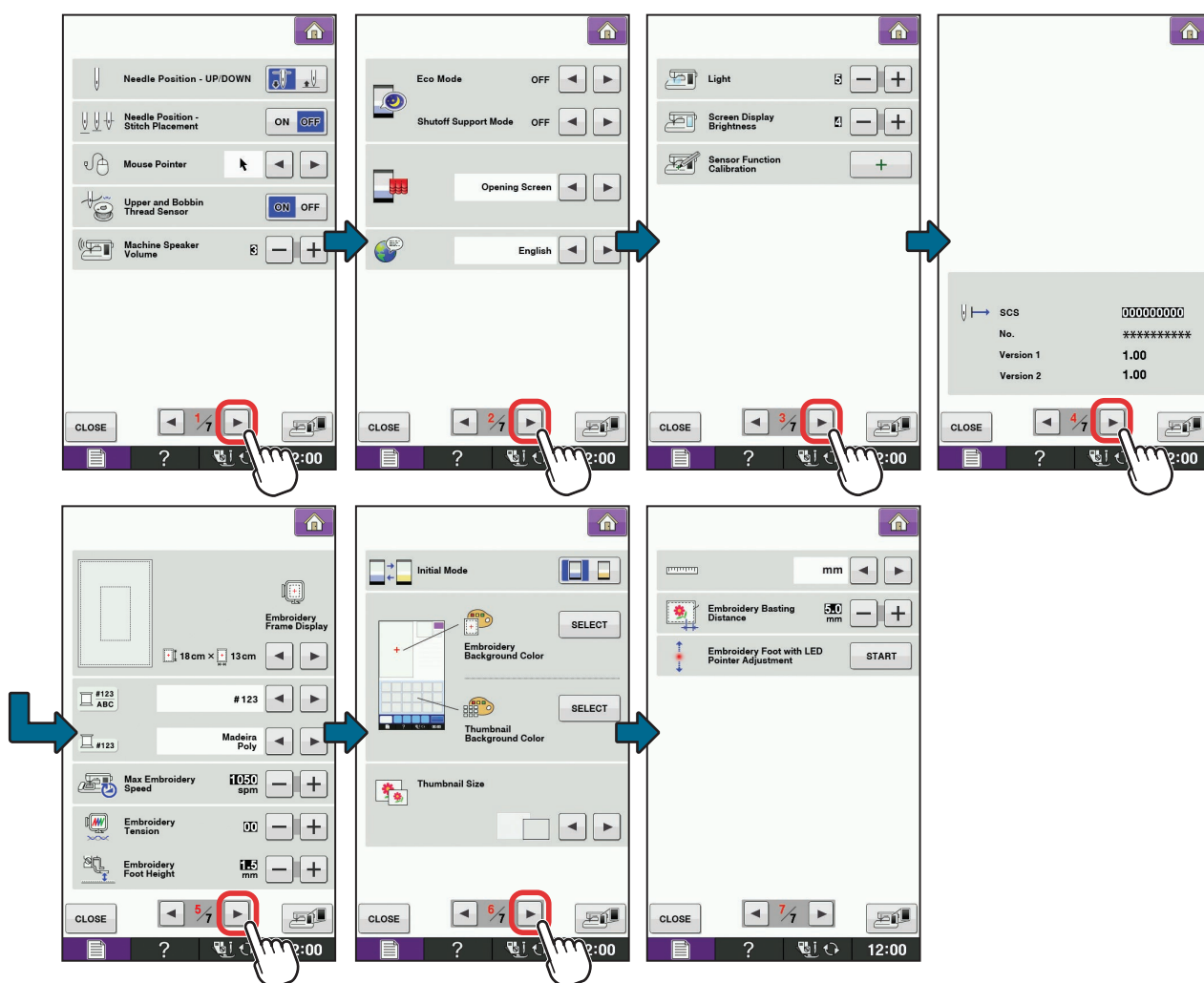
◆ Motifs de modification de broderie



◆ Settings

◆ Ajustes

◆ Réglages



Summary of Stitch Patterns

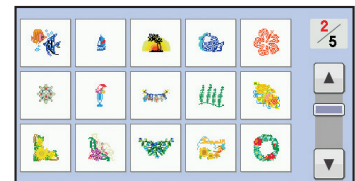
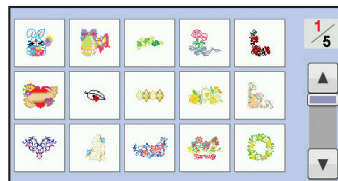
Resumen de tipos de puntada

Sommaire des motifs de point

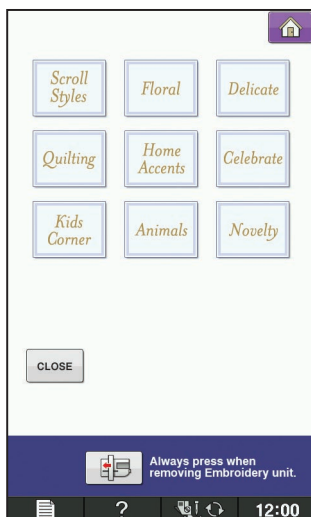
◆ Embroidery Patterns

◆ Patrones de bordado

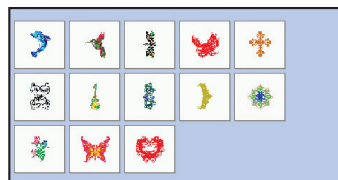
◆ Motifs de broderie



Exclusives



Scroll Styles



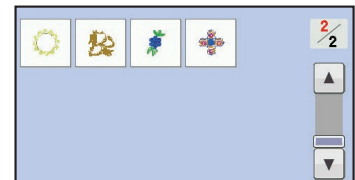
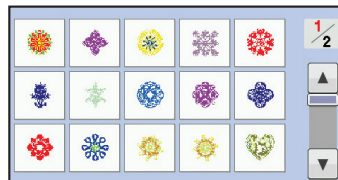
Floral



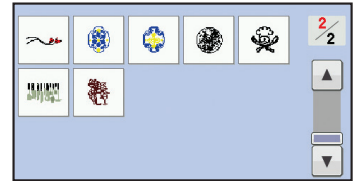
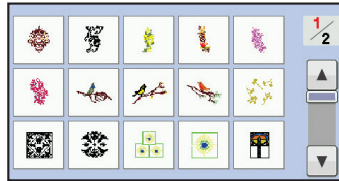
Delicate



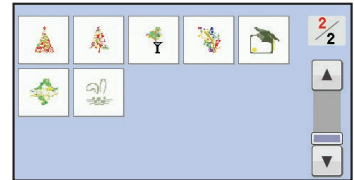
Quilting



Home
Accents



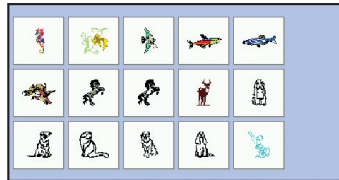
Celebrate



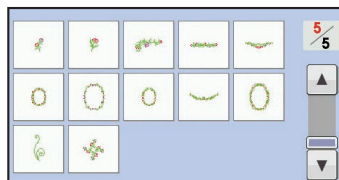
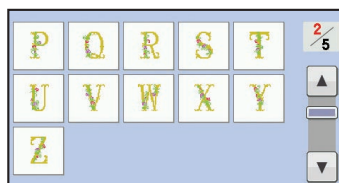
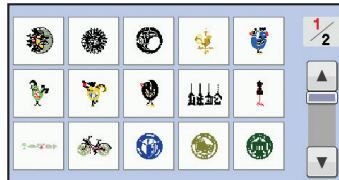
Kids
Corner

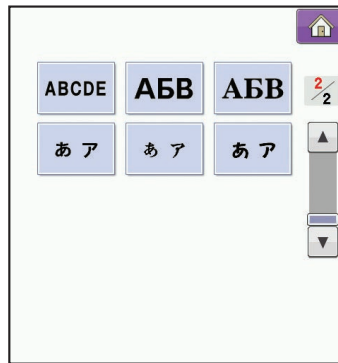
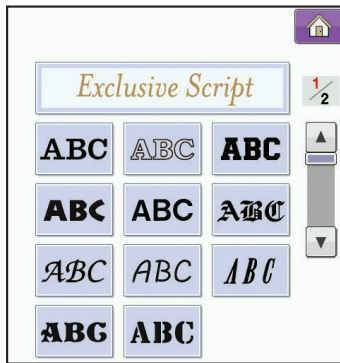


Animals

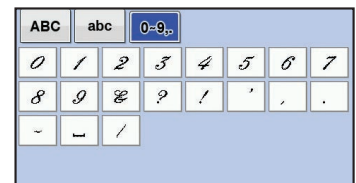
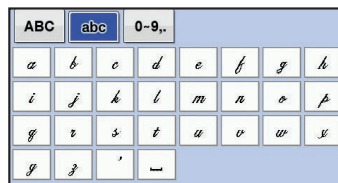
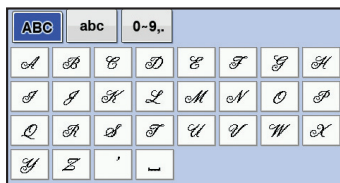


Novelty

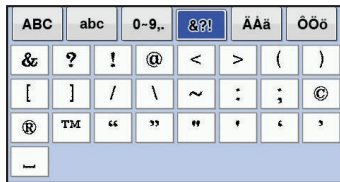
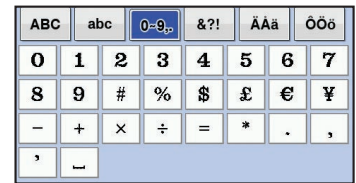
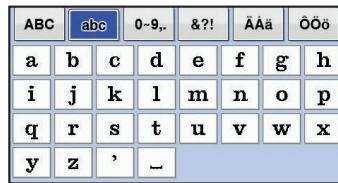
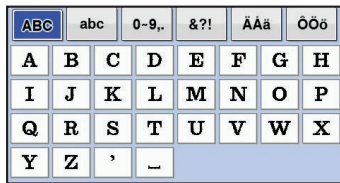




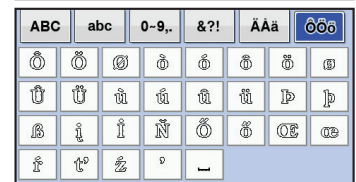
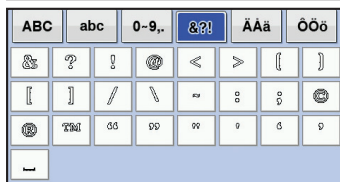
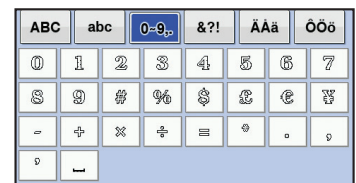
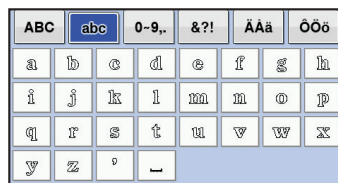
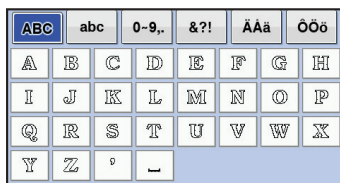
Exclusive Script



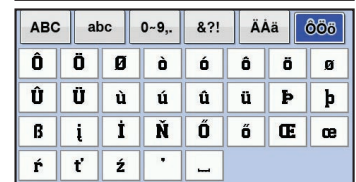
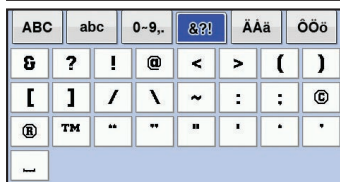
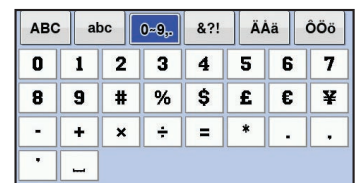
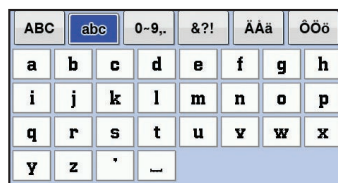
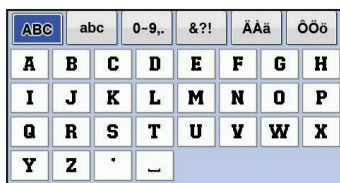
ABC



ABC



ABC



ABC

ABC	abc	0-9.,	&?!,	ÄÄä	ÖÖö		
A	B	C	D	E	F	G	H
I	J	K	L	M	N	O	P
Q	R	S	T	U	V	W	X
Y	Z	'	_				

ABC	abc	0-9..	&?!.	ÄÄä	ÖÖö		
a	b	c	d	e	f	g	h
i	j	k	l	m	n	o	p
q	r	s	t	u	v	w	x
y	z	'	_				

ABC	abc	0-9	&?!	ÄÄä	ÖÖö		
0	1	2	3	4	5	6	7
8	9	#	%	\$	£	€	¥
-	+	x	÷	=	*	.	,
'	_						

ABC	abc	0-9 _{..}	&?! 	ÄÄä	ÖÖö		
&	?	!	@	<	>	()
[]	/	\	~	:	;	©
®	™	"	"	"	'	'	'
<u> </u>							

ABC	abc	0-9..	&?!	ÄÄä	ÖÖö		
Â	Ã	Ä	Å	Ä	Å	Ä	Å
Æ	Æ	Ç	Ç	È	É	Ê	Ë
Ë	è	é	ê	ë	ì	í	î
Ð	Ñ	ñ	,	—			

ABC	abc	0-9.,	&?!,	ÄÄä	ÖÖö		
Ô	Ö	Ø	ò	ó	ô	ö	ø
Û	Ü	ù	ú	û	ü	þ	þ
ß	ı	ı	Ñ	Õ	õ	Œ	œ
ř	ř	ž	'	_			

ABC

ABC	abc	0-9..	&?!	ÄÄä	ÖÖö		
A	B	C	D	E	F	G	H
I	J	K	L	M	N	O	P
Q	R	S	T	U	V	W	X
Y	Z	'	_				

ABC	abc	0-9,.	&?!.	ÄÄä	ÖÖö		
a	b	c	d	e	f	g	h
i	j	k	l	m	n	o	p
q	r	s	t	u	v	w	x
y	z	'	_				

ABC	abc	0-9	&?! ₃	ÄÄä	ÖÖö		
0	1	2	3	4	5	6	7
8	9	#	%	\$	£	€	¥
-	+	x	÷	=	*	.	,
?	_						

ABC	abc	0-9.,	&?! 	ÄÄä	ÖÖö		
&	?	!	@	<	>	()
[]	/	\	~	:	;	©
®	™	“	”	“	”	“	”
—							

ABC	abc	0-9..	&?!	AAa	ÖÖö		
Â	Ã	Å	à	á	â	ã	ä
å	Æ	æ	Ç	ç	È	É	Ê
Ë	è	é	ê	ë	Ï	ì	ï
Ð	Ñ	ñ	Í	í	—		

ABC	abc	0-9.,	&?!	ÄÄä	ÖÖö		
Ô	Ö	Ø	ò	ó	ô	ö	ø
Ù	Û	ù	ú	û	ü	þ	þ
ß	ı	ı	Ñ	Ö	ö	œ	œ
ř	ř	ž	'	_			

ABC

ABC	abc	0-9..	&?! 				
À	Á	Â	Ã	Ä	Å	Æ	Ç
È	É	Ê	Ë	Ì	Í	Î	Ï
Ð	Ñ	Ò	Ó	Ô	Õ	Ö	×
Ù	Ú	Û	Ü	Ý	Þ	ß	à
á	â	ã	ä	å	æ	ç	

ABC	abc	0-9..	&?!				
a	b	c	d	e	f	g	h
i	j	k	l	m	n	o	p
q	r	s	t	u	v	w	x
y	z	'	_				

ABC	abc	0-9..	&?! 				
0	1	2	3	4	5	6	7
8	9	-	=	.	,	'	back

ABC	abc	0-9..	&?!				
&	?	!	<	>	[]	/
\	~	:	;	"	"	'	'
_							

ABC

ABC	abc	0-9..	&?!	ÄÄä	ÖÖö		
À	Á	Â	Ã	Ä	Å	Æ	Ç
È	É	Ê	Ë	Ì	Í	Î	Ï
Ð	Ñ	Ò	Ó	Ô	Õ	Ö	×
Ù	Ú	Û	Ü	Ý	Þ	ß	à

ABC	abc	0-9..	&?!	ÄÄä	ÖÖö		
a	b	c	d	e	f	g	h
i	j	k	l	m	n	o	p
q	r	s	t	u	v	w	x
y	z	'	_				

ABC	abc	0-9	&?! ⌂	ÄÄä	ÖÖö		
0	1	2	3	4	5	6	7
8	9	#	%	\$	£	€	¥
-	+	×	÷	=	*	.	,
'	_						

ABC	abc	0-9..	&?! 	ÄÄä	ÖÖö		
£	?	!	@	<	>	()
[]	/	\	~	:	;	©
®	™	“	”	”	’	‘	,
—							

ABC	abc	0-9,.	&?!.	ÄÄä	ÖÖö		
À	Á	Â	Ã	Ä	Å	Æ	Ç
È	É	Ê	Ë	Ì	Í	Î	Ï
Ð	Ñ	Ò	Ó	Ô	Õ	Ö	×
Ù	Ú	Û	Ü	Ý	Þ	ß	à

ABC	abc	0-9..	&?!	ÄÄä	ÖÖö		
Ô	Õ	Ø	ò	ó	ô	ö	ø
û	ü	ù	û	ü	ü	þ	þ
ß	ı	İ	Ñ	Ö	ö	Æ	æ
ƒ	ƒ	z	'	_			

ABC

ABC	abc	0-9..	&?!	ÄÄä	ÖÖö		
A	B	C	D	E	F	G	H
I	J	K	L	M	N	O	P
Q	R	S	T	U	V	W	X
Y	Z	'	_				

ABC	abc	0-9..	&?!	ÄÄä	ÖÖö		
a	b	c	d	e	f	g	h
i	j	k	l	m	n	o	p
q	r	s	t	u	v	w	x
y	z	'	_				

ABC	abc	0-9	&?! _{...}	ÄÄä	ÖÖö		
0	1	2	3	4	5	6	7
8	9	#	%	\$	£	€	¥
-	+	x	÷	=	*	,	,
'	and						

ABC

ABC	abc	0-9..	&?! (highlighted)	ÄÄä	ÖÖö		
&	?	!	@	<	>	()
[]	/	\	~	:	:	©
®	™	“	”	”	’	’	’
<div>—</div>							

ABC	abc	0-9..	&?!	ÄÄä	ÖÖö		
Â	Ã	Ä	à	á	â	ã	ä
å	Æ	æ	Ç	ç	È	É	Ê
Ë	è	é	ê	ë	Ï	ì	í
Ð	Ñ	ñ	'	—			

ABC	abc	0-9..	&?!	ÄÄä	ÖÖö		
Ô	Õ	Ø	ò	ó	ô	õ	ø
Ù	Ú	ù	ú	û	ü	þ	ÿ
ß	ı	ı	Ń	Ō	ō	œ	œ
ř	ť	ž	'	—			

ABC	abc	0-9..	&?!	ÄÄä	ÖÖö		
A	B	C	D	E	F	G	H
I	J	K	L	M	N	O	P
Q	R	S	T	U	V	W	X
Y	Z	'	Insert				

ABC	abc	0-9..	&?!	ÄÄä	ÖÖö		
a	b	c	d	e	f	g	h
i	j	k	l	m	n	o	p
q	r	s	t	u	v	w	x
y	z	'	—				

ABC	abc	0-9	&?! ⌂	ÄÄä	ÖÖö		
0	1	2	3	4	5	6	7
8	9	#	%	\$	£	€	¥
-	+	X	÷	=	*	.	,
>	=						

ABC

ABC	abc	0-9..	&?! 	ÄÄä	ÖÖö		
&	?	!	@	<	>	()
[]	/	\	~	:	:	©
®	™	“	”	”	’	’	’
<div>—</div>							

ABC	abc	0-9..	&?!	ÄÄä	ÖÖö		
Á	À	Ä	à	á	â	ã	ä
â	Æ	æ	Ç	ç	È	É	Ê
Ë	è	é	ê	ë	Ï	ì	í
Ð	Ñ	ñ	,				

ABC	abc	0-9..	&?!	ÄÄä	ÖÖö		
Œ	Œ	Œ	ð	ó	ô	õ	ø
Ù	Ú	ù	ú	û	ü	þ	ÿ
ß	ı	ı	Ń	Ō	ō	œ	œ
ř	ť	ž	'	—			

ABC	abc	0-9..	&?!	ÄÄä	ÖÖö		
A	B	C	D	E	F	G	H
I	J	K	L	M	N	O	P
Q	R	S	T	U	V	W	X
Y	Z	'	_				

ABC	abc	0-9..	&?!.	ÄÄä	ÖÖö		
a	b	c	d	e	f	g	h
i	j	k	l	m	n	o	p
q	r	s	t	u	v	w	x
y	z	'					

ABC	abc	0-9	&?!	ÄÄä	ÖÖö		
0	1	2	3	4	5	6	7
8	9	#	%	\$	£	€	¥
-	+	x	÷	=	*	.	,
'	—						

ABC

ABC	abc	0-9..	&?! 	ÄÄä	ÖÖö		
§	?	!	@	<	>	()
[]	/	\	~	:	:	©
®	™	“	”	”	’	’	’
<input type="text"/>							

ABC	abc	0-9..	&?!	ÄÄä	ÖÖö		
Â	Ã	Ä	à	á	â	ã	ä
å	Æ	æ	Ç	ç	È	É	Ê
Ë	è	é	ê	ë	Ï	ì	í
Ð	Ñ	ñ	'	—			

ABC	abc	0-9..	&?!	ÄÄä	ÖÖö		
Ô	Õ	Ø	ò	ó	ô	õ	ø
Ù	Ú	ù	ú	û	ü	þ	ÿ
ß	ı	ı	Ń	Ō	ō	œ	œ
ř	ť	ž	'	—			

ABC	abc	0-9..	&?!.	ÄÄä	ÖÖö		
A	B	C	D	E	F	G	H
I	J	K	L	M	N	O	P
Q	R	S	T	U	V	W	X
Y	Z	'					

ABC	abc	0-9..	&?!.	ÄÄä	ÖÖö		
a	b	c	d	e	f	g	h
i	j	k	l	m	n	o	p
q	r	s	t	u	v	w	x
y	z	'	_				

ABC	abc	0-9	&?!	ÄÄä	ÖÖö		
0	1	2	3	4	5	6	7
8	9	#	%	\$	£	€	¥
-	+	×	÷	=	*	.	,
'	—						

ABCDE

ABC	abc	0-9..	&?! 	ÄÄä	ÖÖö		
&	?	!	@	<	>	()
[]	/	\	~	:	;	©
®	™	“	”	”	’	’	’
<div>Insert</div>							

ABC	abc	0-9..	&?! ÄÄä	ÖÖö			
Â	Ã	Ä	à	á	â	ã	
ä	Æ	æ	Ç	ç	È	É	Ê
Ë	è	é	ê	ë	Ï	ì	í
Ð	Ñ	ñ	'	—			

ABC	abc	0-9..	&?!	ÄÄä	ÖÖö		
Ô	Õ	Ø	ò	ó	ô	õ	ø
Ù	Ú	ù	ú	û	ü	þ	ÿ
ß	ı	İ	Ń	Ō	ō	œ	ø
ř	ť	ž	'				

ABC	abc	0-9..	&?!	ÄÄä	ÖÖö		
A	B	C	D	E	F	G	H
I	J	K	L	M	N	O	P
Q	R	S	T	U	V	W	X
Y	Z	'	—				

ABC	abc	0-9..	&?!.	ÄÄä	ÖÖö		
a	b	c	d	e	f	g	h
i	j	k	l	m	n	o	p
q	r	s	t	u	v	w	x
y	z	'	—				

ABC	abc	0-9	&?! ~	ÄÄä	ÖÖö		
0	1	2	3	4	5	6	7
8	9	#	%	\$	£	€	¥
-	+	x	÷	=	*	.	,
'	—						

ABC	abc	0-9..	&?! (highlighted)	ÄÄä	ÖÖö		
&	?	!	@	<	>	()
[]	/	\	~	:	:	©
®	™	“	”	”	’	’	’
<div>Insert</div>							

ABC	abc	0-9..	&?!	ÄÄä	ÖÖö		
Â	Ã	Ä	à	á	â	ã	ä
å	Æ	æ	Ç	ç	È	É	Ê
Ë	è	é	ê	ë	Ï	ì	ï
Ð	Ñ	ñ	'	—			

ABC	abc	0-9..	&?!	ÄÄä	ÖÖö		
Ô	Õ	Ø	ò	ó	ô	õ	ø
Ù	Ú	ù	ú	û	ü	þ	ÿ
ß	ı	ı	Ń	Ō	ō	œ	œ
ř	ť	ž	'	—			

АБВ

АБВ	ЧШЩ	абв	чшщ	0-9,.			
А	Б	В	Г	Д	Е	Ё	Ж
З	И	Й	К	Л	М	Н	О
П	Р	С	Т	У	Ф	Х	Ц
—							

АБВ	ЧШЩ	абв	чшщ	0-9,,			
Ч	Ш	Щ	Ъ	Ы	Ь	Э	Ю
Я	Г	Є	І	Ї	Ў	Ҳ	Ң
Ј	Љ	Њ	Џ	Ѓ	Ѕ	Ї	—

АБВ	ЧШЩ	абв	чшщ	0-9,.			
а	б	в	г	д	е	ё	ж
з	и	й	к	л	м	н	о
п	р	с	т	у	ф	х	ц
—							

АБВ	ЧШЩ	абв	чшщ	0-9,.			
ч	ш	щ	ъ	ы	ь	э	ю
я	г	е	і	ї	ў	ҳ	ӧ
ј	љ	њ	џ	ѓ	ѕ	ѝ	—

АБВ	ЧШЩ	абв	чшщ	0-9,.			
0	1	2	3	4	5	6	7
8	9	-	.	,	&	?	!
()	/	'	—			

АБВ

АБВ	ЧШЩ	абв	чшщ	0-9,.			
А	Б	В	Г	Д	Е	Ё	Ж
З	И	Й	К	Л	М	Н	О
П	Р	С	Т	У	Ф	Х	Ц
—							

АБВ	ЧШЩ	абв	чшщ	0-9,.			
Ч	Ш	Щ	Ъ	Ы	Ь	Э	Ю
Я	Г	Є	І	Ї	Ў	Ҳ	Ң
Ј	Љ	Њ	Џ	Ѓ	Ѕ	Ї	—

АБВ	ЧШЩ	абв	чшщ	0-9,.			
а	б	в	г	д	е	ё	ж
з	и	й	к	л	м	н	о
п	р	с	т	у	ф	х	ц
—							

АБВ	ЧШЩ	абв	чшщ	0-9,.			
ч	ш	щ	ъ	ы	ь	э	ю
я	г	є	і	ї	ў	ҳ	ӈ
ј	љ	њ	џ	ѓ	ѕ	ѝ	—

АБВ	ЧШЩ	абв	чшщ	0-9,.			
0	1	2	3	4	5	6	7
8	9	-	.	,	&	?	!
()	/	'	_			

あア

Katakana characters: One of the character sets of Japanese.
Caracteres Katakana: uno de los grupos de caracteres del japonés.
Caractères Katakana: l'un des jeux de caractères japonais.

Hiragana characters: One of the character sets of Japanese.
Caracteres Hiragana: uno de los grupos de caracteres del japonés.
Caractères Hiragana: l'un des jeux de caractères japonais.

Arabic numerals, Japanese Kanji numerals
Números arábigos, números Kanji japoneses
Chiffres arabes, chiffres Kanji japonais

Kanji characters often used in daily life / symbols.
Los caracteres Kanji se utilizan a menudo en la vida diaria / como símbolos.
Les caractères Kanji sont souvent utilisés dans la vie de tous les jours / symboles.

あいう	アイウ	0-9 &?!	年組	H V					
あ い	か 行	さ 行	た 行	な 行	は 行	ま 行	や 行	ら 行	わ 行
あ	い	う	え	お					
あ	い	う	え	お					

Vertical

Vertical

Vertical

Horizontal

Horizontal

Horizontal

あいう	アイウ	0-9 &?!	年組	H V					
あ 行	か 行	さ 行	た 行	な 行	は 行	ま 行	や 行	ら 行	わ 行
あ	い	う	え	お					
あ	い	う	え	お					

あいう	アイウ	0-9 &?!	年組	H V					
あ	か	さ	た	な	は	ま	や	ら	わ
か	き	く	け	こ					
が	ぎ	ぐ	げ	ご					

あいう	アイウ	0-9 &?!	年組	H V					
あ	か	さ	た	な	は	ま	や	ら	わ
さ	し	す	せ	そ					
ざ	じ	ず	ぜ	ぞ					
									ー

あいう	アイウ	0-9 &?!	年組	H V					
あ	か	さ	た	な	は	ま	や	ら	わ
た	ち	つ	て	と					
だ	ぢ	づ	で	ど					
		っ							ー

あいう	アイウ	0-9 &?!	年組	H V					
あ	か	さ	た	な	は	ま	や	ら	わ
な	に	ぬ	ね	の					

あいう	アイウ	0-9 &?!	年組	H V					
あ	か	さ	た	な	は	ま	や	ら	わ
は	ひ	ふ	へ	ほ					
ば	び	ぶ	べ	ぼ					
ぱ	ぴ	ぷ	ぺ	ぽ					ー

*Japanese characters

*Caracteres japoneses

*Caractères japonais

Summary of Stitch Patterns Resumen de tipos de puntada Sommaire des motifs de point

あいう **アイウ** 0-9 &?! 年組 **H V**

ア行 **カ** サ行 タ行 ナ行 ハ行 マ行 ヤ行 ラ行 ワ行

カ **キ** **ク** **ケ** **コ**

ガ **ギ** **グ** **ゲ** **ゴ**

—

あ ア

*Caractères japonais

Embroidery Pattern Color Change Table

Tabla de cambio de color para patrones de bordado

Tableau de changement de couleur des motifs de broderie

◆ Baby Lock “Exclusives” Scroll Styles designs

◆ Diseños de estilos variados “exclusivos” de Baby Lock

◆ Motifs de type volute Baby Lock « exclusifs »

Exclusives

Scroll
Styles



No.1

50 min	
1	(019)
2	(405)
3	(017)
4	(405)
5	(001)
6	(405)
7	(019)
8	(017)
9	(007)
10	(405)
11	(019)
12	(405)
13	(017)
14	(405)
15	(007)
16	(405)
↓	228.6 mm
↔	175.9 mm

Order to embroider
Orden para el bordador
Séquence pour broder

Embroidery thread color
Color del hilo de bordado
Couleur du fil de broderie

Time required for
embroidering
Tiempo requerido para el
bordado
Durée requise pour
broder

Embroidery thread color
number
Número de color del hilo
de bordado
Numéro de couleur du fil
de broderie

Embroidery size
Tecla de tamaño
Taille de la broderie



No. 7

30 min	
1	(330)
2	(513)
3	(507)
4	(208)
5	(513)
↓	296.0 mm
↔	107.5 mm



No. 2

37 min	
1	(086)
2	(513)
3	(614)
4	(800)
5	(058)
6	(707)
7	(086)
8	(614)
9	(800)
10	(808)
↓	224.8 mm
↔	176.0 mm



No. 4

74 min	
1	(001)
2	(800)
↓	163.8 mm
↔	176.0 mm



No. 8

43 min	
1	(415)
2	(406)
3	(420)
↓	296.0 mm
↔	135.8 mm



No. 3

61 min	
1	(502)
2	(513)
3	(515)
4	(208)
5	(126)
6	(339)
7	(323)
8	(900)
9	(502)
10	(513)
11	(515)
12	(208)
13	(126)
14	(339)
15	(323)
16	(900)
17	(515)
18	(339)
19	(502)
20	(513)
21	(126)
22	(208)
23	(900)
↓	296.0 mm
↔	142.1 mm



No. 5

32 min	
1	(339)
↓	204.6 mm
↔	176.0 mm



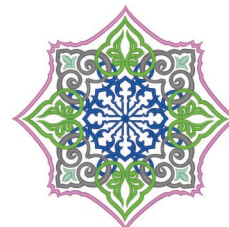
No. 6

87 min	
1	(019)
2	(900)
3	(001)
↓	165.8 mm
↔	126.0 mm



No. 9

52 min	
1	(214)
↓	295.9 mm
↔	169.0 mm



No. 10

43 min	
1	(405)
2	(817)
3	(513)
4	(542)
5	(810)
↓	176.0 mm
↔	176.0 mm



No. 11 32 min	
1	(515)
2	(507)
3	(612)
4	(810)
5	(614)
6	(086)
7	(085)
8	(107)
9	(420)
10	(017)
11	(007)
↓	176.1 mm
↔	126.0 mm



No. 12 37 min	
1	(807)
2	(030)
3	(206)
4	(337)
5	(807)
↓	157.0 mm
↔	176.0 mm



No. 13 20 min	
1	(800)
↓	113.8 mm
↔	126.0 mm

◆ Baby Lock “Exclusives” Floral designs

◆ Diseños florales “exclusivos” de Baby Lock

◆ Motifs floraux Baby Lock « exclusifs »

Exclusives

Floral



No. 1 34 min	
1	(001)
2	(810)
3	(800)
4	(620)
5	(513)
↓	296.2 mm
↔	139.0 mm



No. 4 78 min	
1	(513)
2	(517)
3	(027)
4	(058)
5	(001)
6	(807)
7	(058)
8	(086)
9	(058)
10	(001)
11	(807)
12	(058)
13	(807)
↓	239.8 mm
↔	176.0 mm



No. 7 88 min	
1	(001)
2	(534)
3	(017)
4	(058)
5	(001)
6	(534)
7	(017)
8	(206)
9	(800)
10	(058)
↓	176.0 mm
↔	123.1 mm



No. 2 36 min	
1	(800)
2	(513)
3	(507)
↓	296.0 mm
↔	136.8 mm



No. 5 49 min	
1	(515)
2	(058)
3	(001)
4	(079)
5	(058)
↓	182.4 mm
↔	102.4 mm



No. 8 73 min	
1	(337)
2	(800)
3	(058)
4	(206)
5	(800)
6	(337)
7	(058)
8	(337)
9	(800)
10	(058)
11	(534)
12	(800)
13	(001)
14	(206)
15	(058)
16	(206)
17	(337)
18	(001)
19	(058)
↓	176.0 mm
↔	107.6 mm



No. 3 52 min	
1	(800)
2	(900)
3	(509)
↓	197.7 mm
↔	176.0 mm



No. 6 25 min	
1	(079)
2	(800)
3	(058)
4	(001)
5	(515)
6	(058)
7	(027)
8	(515)
9	(058)
↓	96.0 mm
↔	81.1 mm

Embroidery Pattern Color Change Table
Tabla de cambio de color para patrones de bordado
Tableau de changement de couleur des motifs de broderie

	No. 9 48 min 1 (337) 2 (534) 3 (206) 4 (800) 5 (058) 6 (001) 7 (534) 8 (058) ↑ 168.9 mm ↔ 126.0 mm		No. 11 39 min 1 (307) 2 (214) 3 (513) 4 (517) ↑ 126.0 mm ↔ 170.5 mm
	No. 10 34 min 1 (307) 2 (214) 3 (513) 4 (517) ↑ 126.0 mm ↔ 141.2 mm		No. 12 22 min 1 (307) 2 (206) 3 (900) 4 (800) 5 (502) 6 (507) ↑ 263.1 mm ↔ 176.0 mm

◆ Baby Lock “Exclusives” Delicate designs

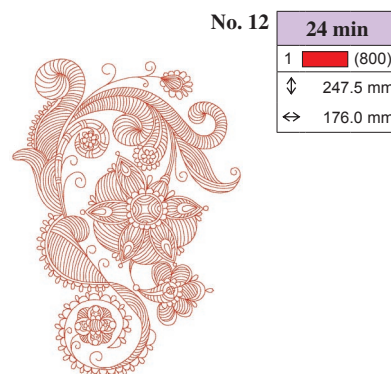
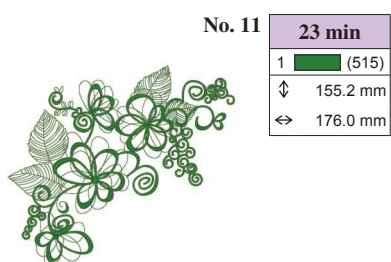
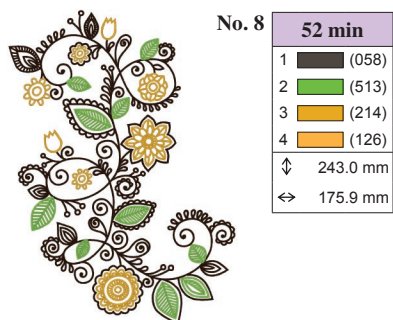
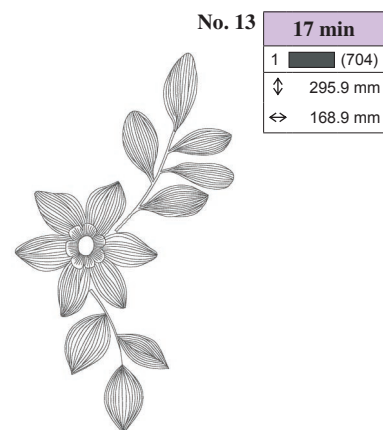
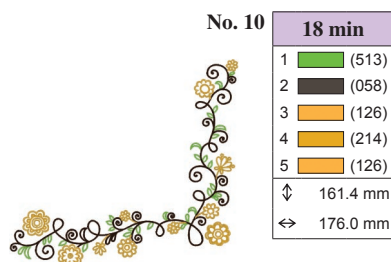
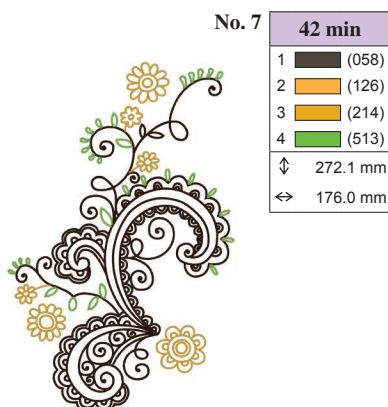
◆ Diseños delicados “exclusivos” de Baby Lock

◆ Motifs délicats Baby Lock « exclusifs »

Exclusives

Delicate

	No. 1 31 min 1 (614) ↑ 292.4 mm ↔ 176.0 mm		No. 4 35 min <table border="1"> <tr><td>1 (704)</td><td>10 (704)</td><td>19 (704)</td><td>28 (704)</td></tr> <tr><td>2 (800)</td><td>11 (800)</td><td>20 (800)</td><td>29 (800)</td></tr> <tr><td>3 (515)</td><td>12 (515)</td><td>21 (515)</td><td>30 (515)</td></tr> <tr><td>4 (019)</td><td>13 (019)</td><td>22 (019)</td><td>31 (019)</td></tr> <tr><td>5 (079)</td><td>14 (079)</td><td>23 (079)</td><td>32 (079)</td></tr> <tr><td>6 (058)</td><td>15 (058)</td><td>24 (058)</td><td>33 (058)</td></tr> <tr><td>7 (214)</td><td>16 (214)</td><td>25 (214)</td><td>34 (214)</td></tr> <tr><td>8 (502)</td><td>17 (502)</td><td>26 (502)</td><td>35 (502)</td></tr> <tr><td>9 (509)</td><td>18 (509)</td><td>27 (509)</td><td>36 (509)</td></tr> </table> ↑ 188.8 mm ↔ 176.0 mm	1 (704)	10 (704)	19 (704)	28 (704)	2 (800)	11 (800)	20 (800)	29 (800)	3 (515)	12 (515)	21 (515)	30 (515)	4 (019)	13 (019)	22 (019)	31 (019)	5 (079)	14 (079)	23 (079)	32 (079)	6 (058)	15 (058)	24 (058)	33 (058)	7 (214)	16 (214)	25 (214)	34 (214)	8 (502)	17 (502)	26 (502)	35 (502)	9 (509)	18 (509)	27 (509)	36 (509)
1 (704)	10 (704)	19 (704)	28 (704)																																				
2 (800)	11 (800)	20 (800)	29 (800)																																				
3 (515)	12 (515)	21 (515)	30 (515)																																				
4 (019)	13 (019)	22 (019)	31 (019)																																				
5 (079)	14 (079)	23 (079)	32 (079)																																				
6 (058)	15 (058)	24 (058)	33 (058)																																				
7 (214)	16 (214)	25 (214)	34 (214)																																				
8 (502)	17 (502)	26 (502)	35 (502)																																				
9 (509)	18 (509)	27 (509)	36 (509)																																				
	No. 2 55 min 1 (001) 2 (542) 3 (027) 4 (515) 5 (800) 6 (307) 7 (027) 8 (515) 9 (800) ↑ 171.5 mm ↔ 176.0 mm		No. 5 20 min 1 (515) 2 (019) 3 (079) 4 (704) 5 (509) 6 (502) 7 (058) 8 (214) 9 (800) ↑ 221.6 mm ↔ 176.0 mm																																				
	No. 3 40 min 1 (339) ↑ 101.9 mm ↔ 176.0 mm		No. 6 16 min 1 (515) 2 (019) 3 (079) 4 (502) 5 (704) 6 (214) 7 (509) 8 (800) 9 (058) ↑ 214.1 mm ↔ 102.0 mm																																				



◆ Baby Lock “Exclusives” Quilting designs

◆ Diseños de acolchado “exclusivos” de Baby Lock

◆ Motifs piqués Baby Lock « exclusifs »

Exclusives

Quilting



No. 1	20 min
1	Yellow (206)
2	Red (800)
3	Green (513)
↓	146.0 mm
↔	141.8 mm



No. 6	8 min
1	Blue (406)
↓	146.0 mm
↔	113.4 mm



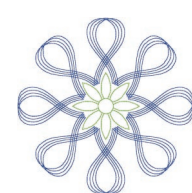
No. 11	12 min
1	Red (800)
↓	146.0 mm
↔	144.8 mm



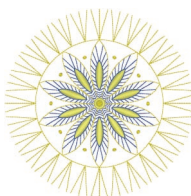
No. 2	13 min
1	Purple (620)
↓	146.0 mm
↔	146.0 mm



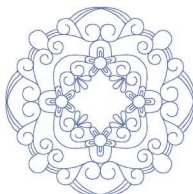
No. 7	7 min
1	Green (542)
↓	146.0 mm
↔	112.8 mm



No. 12	10 min
1	Blue (405)
2	Green (513)
↓	135.4 mm
↔	135.5 mm



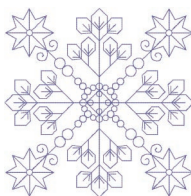
No. 3	22 min
1	Blue (405)
2	Yellow (206)
3	Yellow (202)
4	Blue (405)
5	Yellow (206)
↓	146.0 mm
↔	146.0 mm



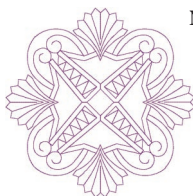
No. 8	11 min
1	Blue (420)
↓	146.0 mm
↔	146.0 mm



No. 13	26 min
1	Yellow (027)
2	Orange (337)
3	Yellow (027)
4	Yellow (205)
↓	146.0 mm
↔	146.0 mm



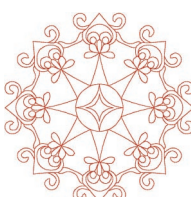
No. 4	13 min
1	Blue (607)
↓	146.0 mm
↔	146.0 mm



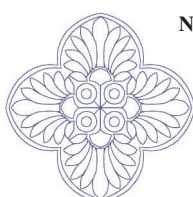
No. 9	11 min
1	Purple (620)
↓	146.0 mm
↔	146.0 mm



No. 14	28 min
1	Yellow (027)
2	Orange (337)
3	Yellow (027)
4	Yellow (205)
↓	146.0 mm
↔	146.2 mm



No. 5	12 min
1	Red (800)
↓	146.0 mm
↔	146.0 mm



No. 10	9 min
1	Blue (406)
↓	146.0 mm
↔	146.0 mm



No. 15	13 min
1	Green (517)
2	Yellow (027)
3	Green (330)
↓	132.7 mm
↔	146.0 mm



No. 16		9 min
1		(517)
2		(027)
↕		146.0 mm
↔		146.0 mm



No. 18		23 min
1		(406)
2		(420)
3		(515)
↕		146.0 mm
↔		103.9 mm



No. 17		20 min
1		(323)
↕		144.5 mm
↔		146.0 mm



No. 19		36 min
1		(420)
2		(337)
3		(126)
4		(869)
5		(420)
6		(337)
7		(126)
8		(869)
9		(420)
10		(337)
11		(126)
12		(869)
13		(420)
14		(337)
15		(126)
16		(869)
↕		176.0 mm
↔		176.0 mm

◆ Baby Lock “Exclusives” Home Accents designs

◆ Diseños domésticos destacados “exclusivos” de Baby Lock

◆ Motifs déco Baby Lock « exclusifs »

Exclusives

Home
Accents



No. 1		69 min
1		(001)
2		(812)
3		(333)
4		(058)
5		(001)
6		(812)
7		(333)
8		(058)
9		(812)
10		(333)
11		(001)
12		(058)
↕		196.0 mm
↔		158.4 mm



No. 3		61 min
1		(517)
2		(205)
3		(517)
↕		296.0 mm
↔		138.4 mm

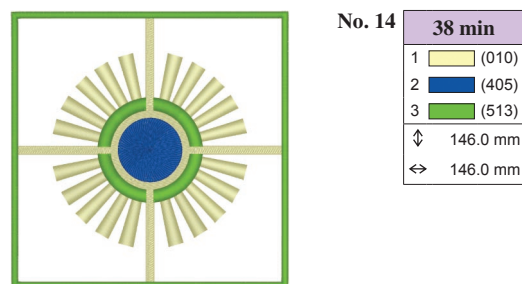
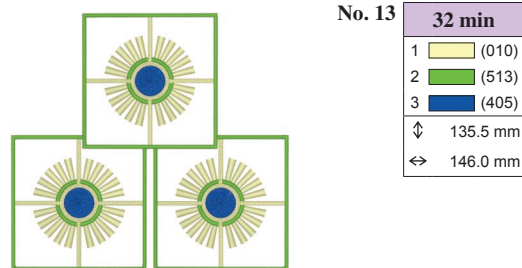
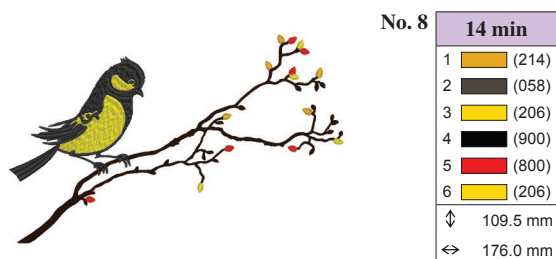
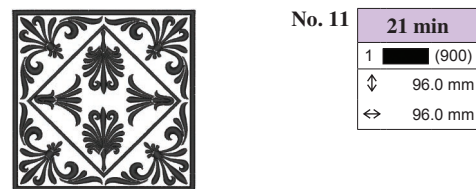
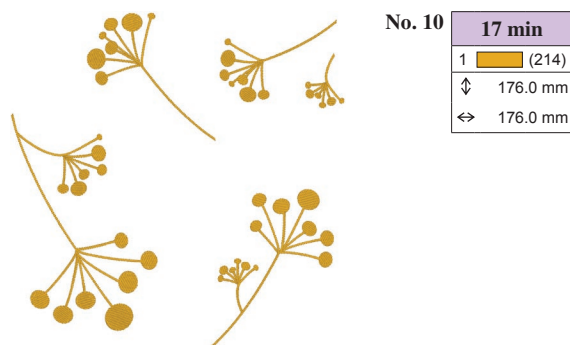


No. 2		40 min
1		(001)
2		(900)
↕		200.0 mm
↔		146.5 mm



No. 4		54 min
1		(800)
2		(206)
3		(209)
4		(330)
5		(058)
6		(209)
7		(206)
8		(058)
9		(800)
10		(206)
11		(058)
12		(330)
13		(209)
↕		296.0 mm
↔		150.8 mm

Embroidery Pattern Color Change Table
Tabla de cambio de color para patrones de bordado
Tableau de changement de couleur des motifs de broderie



Patterns marked with ● have been rotated. Check your design placement prior to embroidering.

Los patrones marcados con ● se han girado. Compruebe la colocación del diseño antes de bordar.

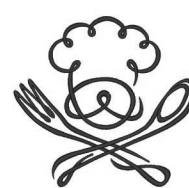
Les motifs signalés par ● ont été pivotés. Vérifiez l'emplacement de votre motif avant de commencer à broder.



No. 15		23 min
1		(328)
2		(339)
3		(420)
4		(900)
↓		96.0 mm
↔		70.3 mm



No. 17		12 min
1		(405)
2		(205)
↓		96.0 mm
↔		81.1 mm



No. 20		8 min
1		(900)
↓		90.1 mm
↔		96.0 mm



No. 16		6 min
1		(800)
2		(900)
↓		45.1 mm
↔		176.0 mm



No. 18		10 min
1		(405)
2		(205)
↓		96.0 mm
↔		81.1 mm



No. 21		14 min
1		(005)
2		(704)
3		(900)
4		(005)
↓		53.9 mm
↔		96.0 mm



No. 19		16 min
1		(900)
↓		125.0 mm
↔		126.0 mm



No. 22		10 min
1		(058)
↓		96.2 mm
↔		80.3 mm

◆ Baby Lock “Exclusives” Celebrate designs

◆ Diseños de celebración “exclusivos” de Baby Lock

◆ Motifs festifs Baby Lock « exclusifs »

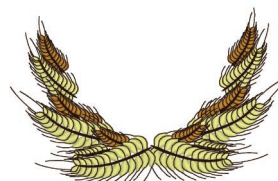
Exclusives



Celebrate



No. 1		19 min
1		(058)
2		(704)
3		(513)
↓		126.0 mm
↔		160.6 mm



No. 3		26 min
1		(812)
2		(323)
3		(058)
4		(812)
5		(323)
6		(058)
↓		93.2 mm
↔		145.9 mm



No. 2		25 min
1		(030)
2		(337)
3		(206)
4		(513)
5		(507)
6		(406)
7		(420)
8		(800)
9		(513)
10		(507)
11		(810)
12		(107)
↓		125.9 mm
↔		126.0 mm



No. 4		55 min
1		(010)
2		(206)
3		(205)
4		(513)
5		(337)
6		(900)
7		(812)
8		(086)
9		(085)
10		(513)
11		(010)
12		(900)
↓		166.1 mm
↔		126.0 mm

Embroidery Pattern Color Change Table
Tabla de cambio de color para patrones de bordado
Tableau de changement de couleur des motifs de broderie



No. 5		12 min
1		(513)
2		(030)
3		(337)
4		(612)
5		(208)
6		(420)
↕		96.0 mm
↔		95.0 mm



No. 11		13 min
1		(513)
2		(812)
3		(900)
4		(206)
5		(515)
↕		96.0 mm
↔		55.0 mm



No. 17		33 min
1		(800)
2		(214)
3		(613)
4		(812)
5		(515)
6		(214)
7		(001)
8		(800)
9		(513)
↕		151.5 mm
↔		107.5 mm



No. 6		13 min
1		(214)
2		(812)
3		(900)
4		(800)
5		(206)
↕		96.0 mm
↔		60.4 mm



No. 12		12 min
1		(405)
2		(812)
3		(900)
4		(007)
5		(017)
↕		96.0 mm
↔		53.5 mm



No. 7		8 min
1		(513)
2		(812)
3		(900)
4		(206)
5		(507)
↕		96.0 mm
↔		38.4 mm



No. 13		10 min
1		(206)
2		(812)
3		(900)
4		(214)
5		(126)
↕		96.0 mm
↔		61.9 mm



No. 18		11 min
1		(010)
2		(612)
3		(209)
4		(513)
5		(017)
6		(507)
7		(010)
8		(017)
9		(900)
↕		93.9 mm
↔		57.3 mm



No. 8		12 min
1		(420)
2		(812)
3		(900)
4		(542)
5		(614)
6		(406)
↕		96.0 mm
↔		51.8 mm



No. 14		12 min
1		(810)
2		(812)
3		(900)
4		(613)
5		(607)
6		(086)
↕		96.0 mm
↔		55.0 mm



No. 9		10 min
1		(804)
2		(812)
3		(900)
4		(124)
5		(810)
6		(620)
7		(614)
↕		96.0 mm
↔		51.6 mm



No. 15		12 min
1		(800)
2		(812)
3		(900)
4		(214)
5		(333)
↕		96.0 mm
↔		53.4 mm



No. 19		13 min
1		(214)
2		(800)
3		(620)
4		(507)
5		(513)
6		(126)
7		(405)
8		(208)
↕		143.6 mm
↔		126.0 mm



No. 10		11 min
1		(086)
2		(812)
3		(900)
4		(124)
5		(804)
6		(614)
↕		96.0 mm
↔		60.3 mm



No. 16		38 min
1		(800)
2		(214)
3		(513)
4		(005)
↕		171.5 mm
↔		126.0 mm



No. 20		24 min
1		(704)
2		(707)
3		(206)
4		(704)
5		(707)
↕		126.0 mm
↔		142.6 mm



No. 21

37 min			
1	(027)	14	(513)
2	(513)	15	(515)
3	(515)	16	(001)
4	(205)	17	(513)
5	(206)	18	(515)
6	(214)	19	(513)
7	(001)	20	(515)
8	(513)	21	(808)
9	(515)	22	(513)
10	(205)	23	(206)
11	(206)	24	(214)
12	(214)	25	(001)
13	(027)		

↑ 119.3 mm ↔ 126.0 mm

No. 22

6 min	
1	(085)
2	(005)
↑	95.8 mm
↔	95.9 mm



◆ Baby Lock “Exclusives” Kids Corner designs

◆ Diseños para niños “exclusivos” de Baby Lock

◆ Motifs jeunesse Baby Lock « exclusifs »

Exclusives

Kids
Corner

No. 1

33 min	
1	(001)
2	(542)
3	(202)
4	(328)
5	(534)
6	(206)
7	(126)
8	(415)
9	(405)
10	(900)
11	(001)
↑	96.0 mm
↔	92.5 mm



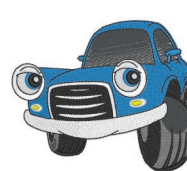
No. 3

31 min	
1	(017)
2	(205)
3	(513)
4	(019)
5	(405)
6	(214)
7	(058)
8	(339)
9	(900)
10	(001)
↑	96.0 mm
↔	79.1 mm



No. 6

31 min	
1	(001)
2	(817)
3	(704)
4	(019)
5	(001)
6	(019)
7	(900)
8	(205)
↑	79.9 mm
↔	96.0 mm



No. 2

28 min	
1	(206)
2	(017)
3	(214)
4	(126)
5	(420)
6	(507)
7	(808)
8	(900)
9	(001)
↑	54.7 mm
↔	96.0 mm



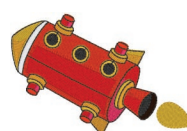
No. 4

25 min	
1	(001)
2	(005)
3	(205)
4	(900)
5	(208)
6	(817)
7	(001)
↑	66.3 mm
↔	96.3 mm



No. 7

18 min	
1	(030)
2	(800)
3	(807)
4	(208)
5	(058)
6	(209)
7	(001)
8	(030)
9	(208)
10	(900)
11	(208)
↑	63.7 mm
↔	96.0 mm

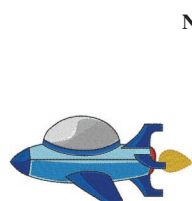


No. 5

28 min	
1	(001)
2	(019)
3	(800)
4	(058)
5	(900)
6	(817)
7	(001)
↑	66.6 mm
↔	96.0 mm



Embroidery Pattern Color Change Table
Tabla de cambio de color para patrones de bordado
Tableau de changement de couleur des motifs de broderie



No. 8

15 min	
1	(001)
2	(800)
3	(420)
4	(005)
5	(406)
6	(017)
7	(019)
8	(208)
9	(900)
↕	46.3 mm
↔	96.0 mm



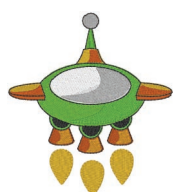
No. 13

12 min	
1	(124)
2	(085)
3	(019)
4	(415)
5	(513)
6	(507)
7	(206)
8	(001)
9	(800)
10	(900)
11	(001)
↕	96.0 mm
↔	39.1 mm



No. 17

12 min	
1	(124)
2	(085)
3	(086)
4	(807)
5	(206)
6	(019)
7	(900)
↕	96.0 mm
↔	86.3 mm



No. 9

18 min	
1	(001)
2	(005)
3	(208)
4	(337)
5	(209)
6	(513)
7	(509)
8	(900)
↕	96.0 mm
↔	86.0 mm



No. 14

16 min	
1	(707)
2	(001)
3	(800)
4	(208)
5	(085)
6	(900)
↕	96.0 mm
↔	77.2 mm



No. 18

15 min	
1	(019)
2	(420)
3	(124)
4	(085)
5	(086)
6	(107)
7	(800)
8	(900)
↕	96.0 mm
↔	69.5 mm



No. 10

14 min	
1	(124)
2	(804)
3	(607)
4	(019)
5	(810)
6	(420)
7	(001)
8	(086)
9	(800)
10	(208)
11	(513)
12	(900)
↕	95.9 mm
↔	48.8 mm



No. 15

17 min	
1	(124)
2	(085)
3	(800)
4	(807)
5	(206)
6	(001)
7	(800)
8	(807)
9	(513)
10	(214)
11	(126)
12	(612)
13	(614)
14	(507)
15	(900)
16	(126)
↕	96.0 mm
↔	55.6 mm



No. 19

13 min	
1	(010)
2	(086)
3	(001)
4	(405)
5	(007)
6	(900)
7	(542)
↕	96.0 mm
↔	59.6 mm



No. 11

12 min	
1	(124)
2	(085)
3	(206)
4	(001)
5	(707)
6	(900)
7	(707)
8	(900)
9	(007)
↕	76.6 mm
↔	96.0 mm



No. 16

18 min	
1	(085)
2	(810)
3	(620)
4	(208)
5	(126)
6	(019)
7	(420)
8	(900)
9	(001)
↕	96.0 mm
↔	68.3 mm



No. 20

13 min	
1	(001)
2	(010)
3	(107)
4	(900)
↕	96.0 mm
↔	91.4 mm



No. 12

20 min	
1	(843)
2	(208)
3	(800)
4	(126)
5	(420)
6	(019)
7	(900)
↕	96.0 mm
↔	93.2 mm



No. 21

10 min	
1	(001)
2	(010)
3	(086)
4	(900)
↕	91.2 mm
↔	60.0 mm



No. 22

28 min

1		(208)
2		(001)
3		(513)
4		(509)
5		(519)
6		(058)
7		(900)
↕	80.6 mm	
↔	96.0 mm	



No. 27

8 min

1		(843)
2		(323)
3		(502)
4		(019)
5		(843)
6		(900)
↕	43.7 mm	
↔	96.0 mm	



No. 23

15 min

1		(208)
2		(001)
3		(513)
4		(509)
5		(519)
6		(058)
7		(800)
8		(900)
↕	55.6 mm	
↔	95.9 mm	



No. 28

4 min

1		(810)
2		(620)
3		(206)
4		(513)
5		(900)
↕	34.6 mm	
↔	96.0 mm	



No. 24

27 min

1		(208)
2		(001)
3		(513)
4		(509)
5		(519)
6		(058)
7		(900)
↕	80.6 mm	
↔	96.0 mm	



No. 25

25 min

1		(001)
2		(542)
3		(323)
4		(519)
5		(707)
6		(900)
↕	96.0 mm	
↔	91.6 mm	



No. 26

25 min

1		(001)
2		(542)
3		(323)
4		(707)
5		(519)
6		(900)
↕	57.0 mm	
↔	126.3 mm	

◆ Baby Lock “Exclusives” Animals designs

◆ Diseños de animales “exclusivos” de Baby Lock

◆ Motifs d'animaux Baby Lock « exclusifs »

Exclusives

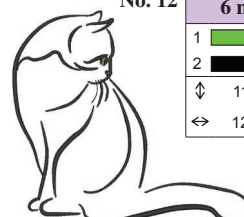
Animals



No. 1	36 min
1	(030)
2	(405)
3	(058)
4	(807)
5	(107)
6	(406)
7	(214)
↕	176.0 mm
↔	72.1 mm



No. 6	51 min
1	(001)
2	(206)
3	(800)
4	(513)
5	(348)
6	(333)
7	(900)
↕	113.2 mm
↔	176.0 mm



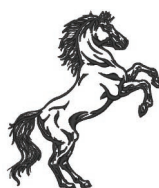
No. 12	6 min
1	(513)
2	(900)
↕	112.2 mm
↔	126.0 mm



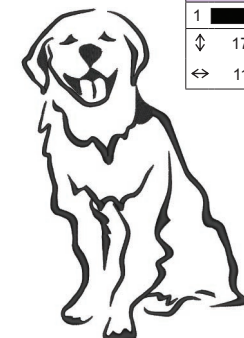
No. 2	20 min
1	(206)
2	(323)
3	(019)
4	(900)
5	(502)
↕	126.0 mm
↔	129.6 mm



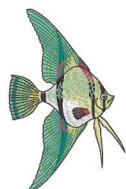
No. 7	21 min
1	(843)
2	(704)
3	(707)
4	(900)
↕	96.0 mm
↔	80.7 mm



No. 8	10 min
1	(900)
↕	96.0 mm
↔	80.7 mm



No. 13	14 min
1	(900)
↕	176.0 mm
↔	119.8 mm



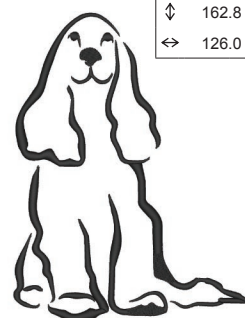
No. 3	19 min
1	(001)
2	(010)
3	(542)
4	(027)
5	(502)
6	(534)
7	(333)
8	(900)
9	(542)
↕	96.0 mm
↔	61.1 mm



No. 9	12 min
1	(001)
2	(058)
↕	96.0 mm
↔	56.7 mm



No. 10	16 min
1	(900)
↕	176.0 mm
↔	97.3 mm



No. 14	13 min
1	(900)
↕	162.8 mm
↔	126.0 mm



No. 4	13 min
1	(001)
2	(027)
3	(502)
4	(420)
5	(209)
6	(800)
7	(900)
↕	42.2 mm
↔	96.0 mm



No. 5	11 min
1	(001)
2	(027)
3	(502)
4	(420)
5	(406)
6	(900)
↕	37.2 mm
↔	96.0 mm



No. 11	12 min
1	(900)
↕	141.0 mm
↔	126.0 mm



No. 15	10 min
1	(017)
↕	152.4 mm
↔	126.0 mm

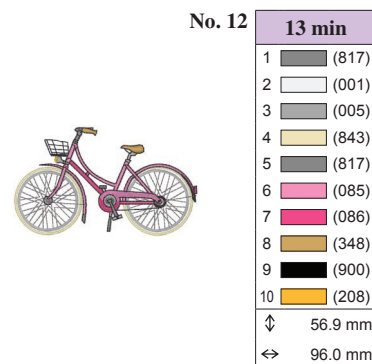
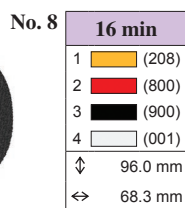
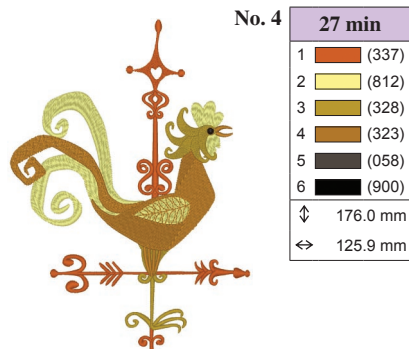
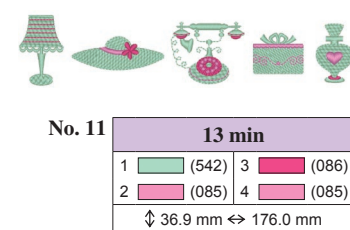
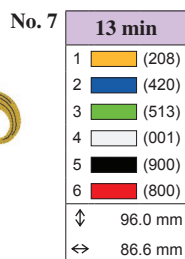
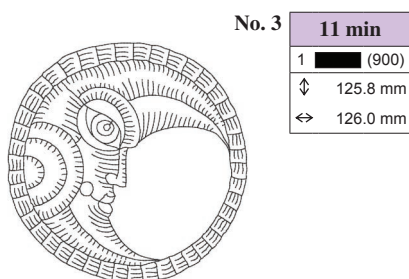
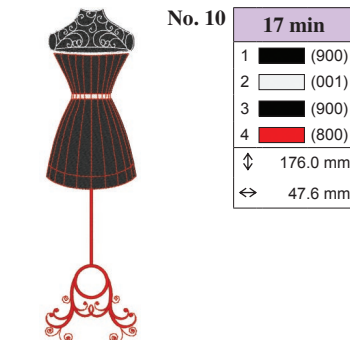
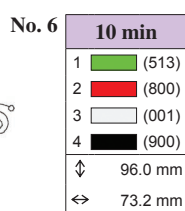
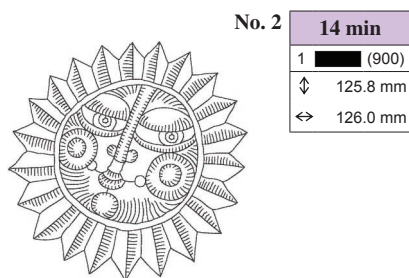
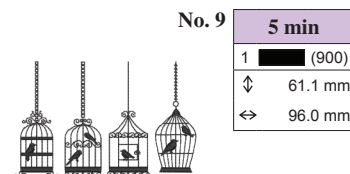
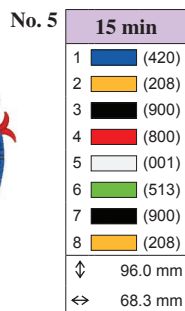
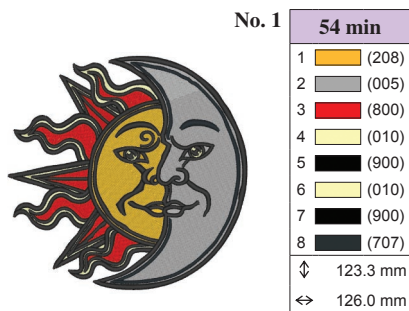
◆ Baby Lock “Exclusives” Novelty designs

◆ Diseños novedosos “exclusivos” de Baby Lock

◆ Motifs nouveauté Baby Lock « exclusifs »


Exclusives

Novelty




Embroidery Pattern Color Change Table
Tabla de cambio de color para patrones de bordado
Tableau de changement de couleur des motifs de broderie




No. 13	15 min
1	 (405)
↕	96.0 mm
↔	96.0 mm

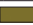


No. 16	17 min
1	 (058)
↕	96.0 mm
↔	96.0 mm




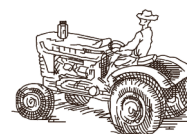
No. 19	5 min
1	 (058)
↕	52.3 mm
↔	126.0 mm




No. 14	14 min
1	 (330)
↕	96.0 mm
↔	96.0 mm




No. 17	13 min
1	 (420)
↕	96.0 mm
↔	96.0 mm




No. 20	7 min
1	 (058)
↕	67.0 mm
↔	96.0 mm




No. 15	16 min
1	 (808)
↕	96.0 mm
↔	96.0 mm




No. 18	9 min
1	 (339)
↕	96.0 mm
↔	96.0 mm



No. 21	4 min
1	 (058)
↕	50.3 mm
↔	96.0 mm



No. 22	3 min
1	 (058)
↕	96.0 mm
↔	51.1 mm

The designs built into the machine are protected by copyright.

Los diseños incorporados en esta máquina están protegidos por las leyes de copyright.

Les motifs intégrés à la machine sont protégés par des droits d'auteur.

© 2012 Studio Auriga SRL and Morango Designs Inc, © 2012 Tacony Corporation. All rights reserved.

The design software is licensed for limited purposes, i.e., for your use in sewing. The design software should not be copied for or shared with others. For more information about copyrights, contact the Embroidery Software Protection Coalition (ESPC) at 682-503-6513 or www.embroideryprotection.org.

El software de diseño se ha concedido bajo licencia para fines limitados, es concreto, para su uso en costura. Este software no se puede copiar para otras personas, ni compartirlo. Para obtener más información sobre las leyes de copyright, póngase en contacto con la Embroidery Software Protection Coalition (ESPC) en el n° de teléfono 682-503-6513 o en www.embroideryprotection.org.

Le logiciel de conception est concédé en licence à des fins limitées, c-à-d. pour votre usage personnel en matière de broderie. Il ne doit être ni copié ni partagé. Pour plus d'informations sur les droits d'auteur, contactez l'ESPC (Embroidery Software Protection Coalition) au 682-503-6513 ou rendez-vous sur le site Web www.embroideryprotection.org.

◆ Embroidery patterns

◆ Patrones de bordado

◆ Motifs de broderie



- "Four Seasons" designs
- Diseños "Cuatro estaciones"
- Motifs « Quatre saisons »



No.1 13 min	
1	(124)
2	(001)
3	(086)
4	(001)
5	(017)
6	(612)
7	(085)
8	(205)
9	(019)
10	(900)
↕	67.2 mm
↔	66.3 mm



No.5 6 min	
1	(900)
2	(800)
↕	145.6 mm
↔	112.0 mm















No.9 15 min	
1	(502)
2	(513)
3	(812)
4	(348)
5	(126)
6	(206)
7	(348)
8	(843)
↕	57.7 mm
↔	104.2 mm



No.2 11 min	
1	(027)
2	(612)
3	(070)
4	(502)
5	(019)
6	(085)
7	(206)
8	(086)
9	(001)
10	(070)
↕	52.4 mm
↔	63.0 mm



13 min					
1		(124)	7		(509)
2		(800)	8		(613)
3		(001)	9		(612)
4		(807)	10		(206)
5		(348)	11		(612)
6		(206)	12		(509)
⇕ 56.0 mm ⇔ 74.8 mm					



No.10 12 min	
1	(124)
2	(513)
3	(005)
4	(079)
5	(086)
6	(206)
↕	90.9 mm
↔	90.5 mm



No.3 3 min	
1	(812)
2	(027)
3	(515)
4	(513)
↕	27.7 mm
↔	56.7 mm



No.7 1 min	
1	(900)
2	(800)
↕	20.4 mm
↔	38.0 mm



No.11 9 min	
1	(406)
2	(810)
3	(085)
4	(202)
↕	66.0 mm
↔	99.7 mm



No.4 5 min	
1	(807)
2	(515)
3	(001)
4	(017)
5	(070)
↕	61.6 mm
↔	76.9 mm



No.8 7 min	
1	(502)
2	(812)
3	(079)
4	(328)
5	(330)
6	(126)
7	(206)
8	(328)
↕	40.8 mm
↔	83.1 mm



No.12 20 min	
1	(399)
2	(337)
3	(001)
4	(017)
5	(405)
↕	150.3 mm
↔	112.8 mm

Embroidery Pattern Color Change Table
Tabla de cambio de color para patrones de bordado
Tableau de changement de couleur des motifs de broderie

No.13



27 min					
1 (420)	11 (420)	21 (085)			
2 (017)	12 (086)	22 (086)			
3 (086)	13 (807)	23 (807)			
4 (807)	14 (085)	24 (085)			
5 (085)	15 (612)	25 (807)			
6 (612)	16 (804)	26 (612)			
7 (804)	17 (206)	27 (804)			
8 (206)	18 (807)	28 (206)			
9 (807)	19 (420)				
10 (017)	20 (017)				
↕ 105.9 mm ↔ 158.6 mm					

No.14



15 min					
1 (509)	6 (502)	11 (001)			
2 (206)	7 (509)	12 (017)			
3 (001)	8 (086)	13 (086)			
4 (124)	9 (502)				
5 (017)	10 (509)				
↕ 68.1 mm ↔ 98.3 mm					

No.15



43 min					
1 (509)					
2 (513)					
3 (502)					
4 (079)					
5 (001)					
6 (206)					
7 (208)					
8 (513)					
9 (502)					
10 (509)					
↕ 129.4 mm					
↔ 131.5 mm					

No.16



14 min					
1 (001)					
2 (019)					
3 (205)					
4 (209)					
5 (085)					
6 (030)					
7 (900)					
8 (405)					
9 (339)					
↕ 76.5 mm					
↔ 69.9 mm					

No.17



2 min					
1 (800)					
2 (019)					
3 (001)					
4 (420)					
↕ 28.9 mm					
↔ 18.9 mm					

No.18



13 min					
1 (030)					
2 (209)					
3 (208)					
4 (206)					
5 (202)					
6 (900)					
↕ 50.9 mm					
↔ 74.5 mm					

No.19



11 min					
1 (017)					
2 (001)					
3 (405)					
↕ 56.4 mm					
↔ 70.0 mm					

No.20



10 min					
1 (030)					
↕ 76.8 mm					
↔ 77.6 mm					

No.21



7 min					
1 (001)					
2 (005)					
3 (405)					
4 (800)					
5 (001)					
6 (817)					
↕ 50.2 mm					
↔ 50.2 mm					

No.22



5 min					
1 (001)	7 (126)				
2 (017)	8 (612)				
3 (502)	9 (800)				
4 (086)	10 (086)				
5 (202)	11 (001)				
6 (019)					
↕ 63.0 mm ↔ 29.7 mm					

No.23



10 min					
1 (030)	5 (005)	9 (001)			
2 (019)	6 (017)	10 (405)			
3 (001)	7 (019)	11 (030)			
4 (405)	8 (206)	12 (017)			
↕ 48.4 mm ↔ 91.4 mm					

No.24



3 min					
1 (534)					
↕ 57.3 mm					
↔ 64.8 mm					

No.25



21 min					
1 (019)	6 (086)	11 (085)			
2 (515)	7 (206)	12 (086)			
3 (513)	8 (019)	13 (206)			
4 (209)	9 (515)				
5 (085)	10 (513)				
↕ 82.7 mm ↔ 85.3 mm					

No.26



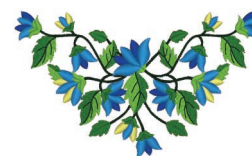
18 min					
1 (001)	9 (001)	17 (001)			
2 (323)	10 (323)	18 (323)			
3 (513)	11 (513)	19 (507)			
4 (507)	12 (507)	20 (513)			
5 (513)	13 (513)	21 (206)			
6 (206)	14 (206)	22 (208)			
7 (208)	15 (208)	23 (328)			
8 (328)	16 (328)				
↕ 76.3 mm ↔ 76.4 mm					

No.27



15 min					
1 (399)					
2 (534)					
3 (810)					
4 (399)					
5 (070)					
6 (614)					
7 (086)					
↕ 87.3 mm					
↔ 89.2 mm					

No.28



19 min					
1 (202)	7 (202)	13 (202)			
2 (406)	8 (406)	14 (406)			
3 (019)	9 (019)	15 (019)			
4 (513)	10 (513)	16 (513)			
5 (515)	11 (515)	17 (515)			
6 (519)	12 (519)	18 (519)			
↕ 76.8 mm ↔ 130.5 mm					



No.29

15 min								
1	(509)	5	(328)	9	(206)			
2	(030)	6	(337)	10	(126)			
3	(206)	7	(323)					
4	(126)	8	(017)					
↓ 73.2 mm ↔ 93.0 mm								



No.34

12 min								
1	(214)	5	(515)	9	(612)			
2	(323)	6	(513)	10	(620)			
3	(339)	7	(209)	11	(339)			
4	(030)	8	(208)					
↓ 52.8 mm ↔ 69.3 mm								



No.40

18 min	
1	(517)
2	(323)
3	(214)
4	(348)
5	(800)
6	(214)
7	(330)
8	(030)
9	(214)
↓ 88.9 mm	
↔ 112.0 mm	



No.30

44 min																	
1	(507)	7	(107)	13	(001)												
2	(534)	8	(202)	14	(017)												
3	(507)	9	(206)	15	(800)												
4	(001)	10	(507)	16	(107)												
5	(017)	11	(534)	17	(202)												
6	(800)	12	(507)	18	(206)												
↓ 123.2 mm ↔ 120.6 mm																	



No.35

7 min								
1	(010)	5	(205)	9	(405)			
2	(027)	6	(900)	10	(030)			
3	(001)	7	(030)					
4	(620)	8	(339)					
↓ 60.6 mm ↔ 68.2 mm								



No.41

13 min	
1	(307)
2	(517)
3	(513)
4	(515)
5	(612)
6	(807)
7	(517)
8	(812)
↓ 74.3 mm	
↔ 75.8 mm	



No.31

17 min	
1	(001)
2	(843)
3	(328)
4	(323)
5	(058)
6	(900)
↓ 93.1 mm	
↔ 52.7 mm	



No.36

3 min	
1	(214)
2	(800)
3	(339)
↓ 22.0 mm	
↔ 81.2 mm	



No.37

7 min	
1	(328)
2	(323)
3	(415)
4	(339)
5	(517)
6	(307)
↓ 45.8 mm	
↔ 53.4 mm	



No.32

25 min	
1	(205)
2	(900)
3	(707)
4	(001)
5	(707)
6	(005)
7	(070)
8	(030)
9	(900)
↓ 77.5 mm	
↔ 74.1 mm	



No.38

10 min	
1	(348)
2	(337)
3	(330)
4	(517)
5	(214)
6	(323)
7	(107)
↓ 75.0 mm	
↔ 76.2 mm	



No.33

3 min	
1	(058)
2	(209)
3	(202)
4	(323)
5	(513)
6	(515)
↓ 30.1 mm	
↔ 33.0 mm	














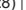





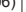





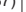





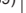



No.39

4 min	
1	(107)
↓ 79.2 mm	
↔ 79.2 mm	



No.43

26 min														
1	(307)	8	(812)	15	(612)									
2	(517)	9	(307)	16	(812)									
3	(513)	10	(517)	17	(612)									
4	(515)	11	(513)	18	(807)									
5	(807)	12	(515)	19	(812)									
6	(517)	13	(807)											
7	(612)	14	(517)											
↓ 106.6 mm ↔ 106.8 mm														

42 min											
1		(399)	12		(328)	23		(339)			
2		(328)	13		(517)	24		(542)			
3		(206)	14		(206)	25		(517)			
4		(337)	15		(339)	26		(058)			
5		(339)	16		(337)	27		(399)			
6		(517)	17		(542)	28		(206)			
7		(328)	18		(058)	29		(517)			
8		(058)	19		(542)	30		(339)			
9		(542)	20		(399)	31		(328)			
10		(399)	21		(328)	32		(058)			
11		(058)	22		(206)	33		(542)			
⇕ 148.1 mm ⇔ 114.0 mm											

Embroidery Pattern Color Change Table
Tabla de cambio de color para patrones de bordado
Tableau de changement de couleur des motifs de broderie



No.44

15 min											
1	(348)	6	(058)	11	(058)	2	(214)	7	(208)	12	(348)
3	(126)	8	(214)	13	(339)	4	(208)	9	(126)		
5	(513)	10	(348)								

↓ 55.9 mm ↔ 122.9 mm



No.45

38 min																													
1	(348)	12	(348)	23	(517)	2	(214)	13	(214)	24	(348)	3	(515)	14	(333)	25	(214)	4	(214)	15	(328)	26	(515)	5	(333)	16	(323)	27	(328)
6	(517)	17	(515)	28	(323)	7	(323)	18	(214)	29	(058)	8	(058)	19	(517)	30	(214)	9	(348)	20	(323)								
10	(515)	21	(348)																										

↓ 123.4 mm ↔ 123.6 mm



No.46

20 min											
1	(800)	6	(843)	11	(079)	2	(620)	7	(307)	12	(800)
3	(124)	8	(515)	13	(620)	4	(079)	9	(339)	14	(515)
5	(001)	10	(124)								

↓ 72.4 mm ↔ 95.5 mm



No.47

12 min											
1	(406)	5	(513)	9	(086)	2	(507)	6	(612)	10	(328)
3	(513)	7	(019)	11	(800)	4	(205)	8	(001)	12	(205)

↓ 56.1 mm ↔ 71.7 mm



No.48

4 min											
1	(323)	2	(208)	3	(507)	4	(800)				

↓ 49.4 mm

↔ 40.2 mm



No.49

8 min											
1	(001)	2	(017)	3	(206)	4	(807)	5	(612)	6	(515)

↓ 54.5 mm

↔ 76.3 mm



No.50

9 min											
1	(405)	2	(328)	3	(107)						

↓ 88.2 mm

↔ 92.2 mm



No.51

6 min											
1	(001)	4	(214)	2	(800)	5	(209)	3	(817)	6	(900)

↓ 60.8 mm ↔ 30.4 mm



No.52

10 min											
1	(214)	2	(800)								

↓ 96.2 mm

↔ 61.3 mm



No.53

6 min											
1	(030)										

↓ 77.8 mm

↔ 75.2 mm



No.54

2 min											
1	(214)	2	(509)	3	(800)						

↓ 64.9 mm

↔ 21.2 mm



No.55

12 min											
1	(058)	2	(515)	3	(800)	4	(206)	5	(323)	6	(058)
7	(534)										

↓ 56.0 mm

↔ 89.4 mm



No.56

10 min											
1	(507)	2	(328)	3	(001)	4	(800)	5	(328)		

↓ 52.8 mm

↔ 98.5 mm



No.57

16 min											
1	(328)	2	(348)	3	(126)	4	(206)	5	(107)	6	(001)
7	(507)	8	(328)	9	(107)						

↓ 92.4 mm

↔ 90.7 mm



No.58

9 min											
1	(542)	5	(542)	9	(415)	2	(323)	6	(323)	10	(323)
3	(415)	7	(415)	11	(406)	4	(323)	8	(323)	12	(205)

↓ 91.6 mm ↔ 90.1 mm



No.59

12 min											
1	(058)	5	(001)	9	(019)	2	(307)	6	(058)	10	(030)
3	(206)	7	(507)	11	(017)	4	(019)	8	(800)		

↓ 75.1 mm ↔ 100.1 mm



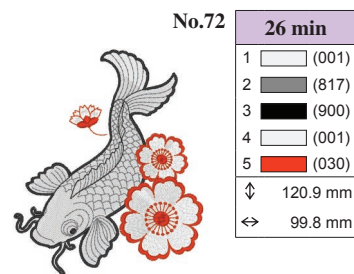
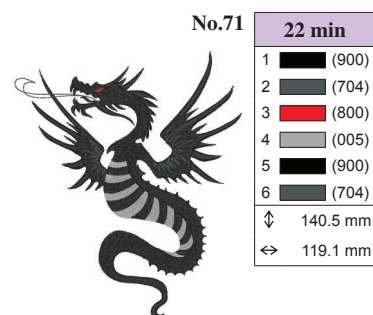
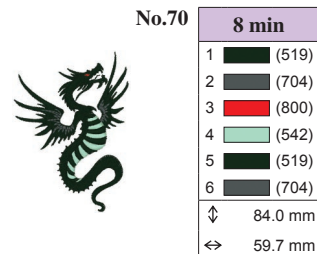
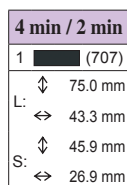
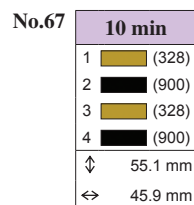
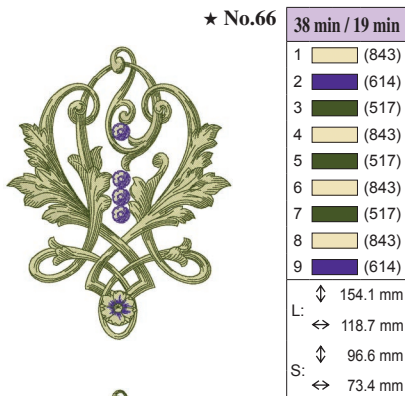
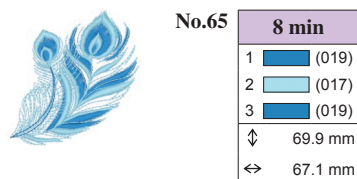
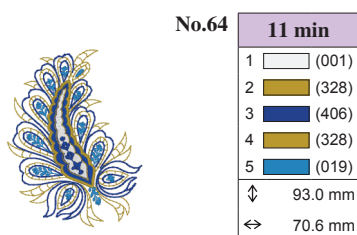
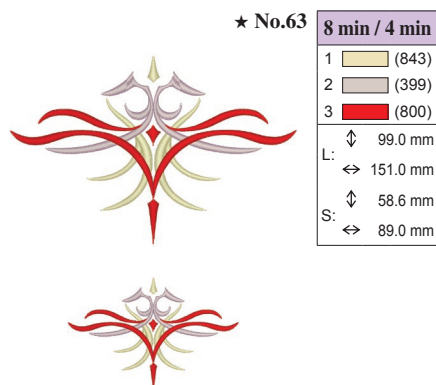
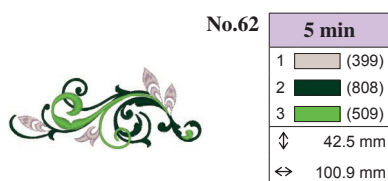
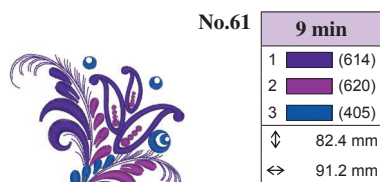
No.60

22 min											
1	(399)	2	(348)	3	(507)	4	(800)	5	(348)	6	(507)
7	(800)	8	(348)								

↓ 95.8 mm

↔ 102.3 mm

- "Other" designs
- "Otros" diseños
- « Autres » motifs



Patterns marked with ★ are in large and small sizes. Make your selection prior to touching embroidery.

Los patrones marcados con ★ están disponibles en tamaño grande y pequeño. Realice su selección antes de tocar el bordado.

Les motifs marqués d'une ★ sont disponibles en grande et petite tailles. Effectuez votre sélection avant d'appuyer sur broderie.

Embroidery Pattern Color Change Table
 Tabla de cambio de color para patrones de bordado
 Tableau de changement de couleur des motifs de broderie

◆ Floral alphabet patterns

◆ Patrones alfabéticos en motivo floral

◆ Motifs alphabet floral



No.1

24 min	
1	(328)
2	(804)
3	(612)
4	(079)
5	(807)
6	(513)
7	(502)
↕	145.1 mm
↔	125.7 mm



No.6

22 min	
1	(328)
2	(804)
3	(612)
4	(079)
5	(807)
6	(513)
7	(502)
↕	142.8 mm
↔	101.8 mm



No.11

27 min	
1	(328)
2	(804)
3	(612)
4	(079)
5	(807)
6	(513)
7	(502)
↕	142.0 mm
↔	119.6 mm



No.2

27 min	
1	(328)
2	(804)
3	(612)
4	(079)
5	(807)
6	(513)
7	(502)
↕	140.9 mm
↔	108.1 mm



No.7

26 min	
1	(328)
2	(804)
3	(612)
4	(079)
5	(807)
6	(513)
7	(502)
↕	141.6 mm
↔	117.3 mm



No.12

20 min	
1	(328)
2	(804)
3	(612)
4	(079)
5	(807)
6	(513)
7	(502)
↕	144.9 mm
↔	107.0 mm



No.3

22 min	
1	(328)
2	(804)
3	(612)
4	(079)
5	(807)
6	(513)
7	(502)
↕	141.8 mm
↔	114.5 mm



No.8

30 min	
1	(328)
2	(804)
3	(612)
4	(079)
5	(807)
6	(513)
7	(502)
↕	141.7 mm
↔	121.6 mm



No.13

32 min	
1	(328)
2	(804)
3	(612)
4	(079)
5	(807)
6	(513)
7	(502)
↕	146.5 mm
↔	124.6 mm



No.4

26 min	
1	(328)
2	(804)
3	(612)
4	(079)
5	(807)
6	(513)
7	(502)
↕	141.2 mm
↔	108.3 mm



No.9

19 min	
1	(328)
2	(804)
3	(612)
4	(079)
5	(807)
6	(513)
7	(502)
↕	145.8 mm
↔	49.7 mm



No.14

27 min	
1	(328)
2	(804)
3	(612)
4	(079)
5	(807)
6	(513)
7	(502)
↕	147.0 mm
↔	116.8 mm



No.5

25 min	
1	(328)
2	(804)
3	(612)
4	(079)
5	(807)
6	(513)
7	(502)
↕	144.3 mm
↔	102.5 mm



No.10

20 min	
1	(328)
2	(804)
3	(612)
4	(079)
5	(807)
6	(513)
7	(502)
↕	144.5 mm
↔	82.3 mm



No.15

25 min	
1	(328)
2	(804)
3	(612)
4	(079)
5	(807)
6	(513)
7	(502)
↕	146.3 mm
↔	115.3 mm



No.16

23 min	
1	(328)
2	(804)
3	(612)
4	(079)
5	(807)
6	(513)
7	(502)
↕	143.4 mm
↔	99.6 mm



No.20

24 min	
1	(328)
2	(804)
3	(612)
4	(079)
5	(807)
6	(513)
7	(502)
↕	144.5 mm
↔	118.4 mm



No.24

25 min	
1	(328)
2	(804)
3	(612)
4	(079)
5	(807)
6	(513)
7	(502)
↕	142.3 mm
↔	115.9 mm



No.17

27 min	
1	(328)
2	(804)
3	(612)
4	(079)
5	(807)
6	(513)
7	(502)
↕	142.7 mm
↔	118.2 mm



No.21

24 min	
1	(328)
2	(804)
3	(612)
4	(079)
5	(807)
6	(513)
7	(502)
↕	144.6 mm
↔	118.5 mm



No.25

22 min	
1	(328)
2	(804)
3	(612)
4	(079)
5	(807)
6	(513)
7	(502)
↕	142.8 mm
↔	116.3 mm



No.18

28 min	
1	(328)
2	(804)
3	(612)
4	(079)
5	(807)
6	(513)
7	(502)
↕	143.4 mm
↔	112.5 mm



No.22

24 min	
1	(328)
2	(804)
3	(612)
4	(079)
5	(807)
6	(513)
7	(502)
↕	145.5 mm
↔	121.5 mm



No.26

26 min	
1	(328)
2	(804)
3	(612)
4	(079)
5	(807)
6	(513)
7	(502)
↕	142.8 mm
↔	92.9 mm



No.19

28 min	
1	(328)
2	(804)
3	(612)
4	(079)
5	(807)
6	(513)
7	(502)
↕	144.1 mm
↔	99.4 mm



No.23

32 min	
1	(328)
2	(804)
3	(612)
4	(079)
5	(807)
6	(513)
7	(502)
↕	146.2 mm
↔	124.8 mm



No.27

4 min	
1	(328)
2	(079)
3	(807)
4	(513)
5	(502)
↕	51.9 mm
↔	45.9 mm



No.29

4 min	
1	(328)
2	(079)
3	(807)
4	(513)
5	(502)
↕	52.2 mm
↔	41.1 mm



No.31

4 min	
1	(328)
2	(079)
3	(807)
4	(513)
5	(502)
↕	53.1 mm
↔	37.3 mm



No.33

4 min	
1	(328)
2	(079)
3	(807)
4	(513)
5	(502)
↕	51.9 mm
↔	42.7 mm



No.35

4 min	
1	(328)
2	(079)
3	(807)
4	(513)
5	(502)
↕	53.9 mm
↔	23.8 mm



No.28

4 min	
1	(328)
2	(079)
3	(807)
4	(513)
5	(502)
↕	51.7 mm
↔	39.6 mm



No.30

4 min	
1	(328)
2	(079)
3	(807)
4	(513)
5	(502)
↕	51.9 mm
↔	39.3 mm



No.32

4 min	
1	(328)
2	(079)
3	(807)
4	(513)
5	(502)
↕	52.1 mm
↔	36.6 mm



No.34

5 min	
1	(328)
2	(079)
3	(807)
4	(513)
5	(502)
↕	52.2 mm
↔	44.3 mm



No.36

3 min	
1	(328)
2	(079)
3	(807)
4	(513)
5	(502)
↕	52.6 mm
↔	30.1 mm

Embroidery Pattern Color Change Table
Tabla de cambio de color para patrones de bordado
Tableau de changement de couleur des motifs de broderie

No.37

5 min	
1	(328)
2	(079)
3	(807)
4	(513)
5	(502)
↕	52.4 mm
↔	43.4 mm

No.41

4 min	
1	(328)
2	(079)
3	(807)
4	(513)
5	(502)
↕	52.8 mm
↔	42.6 mm

No.45

4 min	
1	(328)
2	(079)
3	(807)
4	(513)
5	(502)
↕	52.6 mm
↔	35.0 mm

No.49

5 min	
1	(328)
2	(079)
3	(807)
4	(513)
5	(502)
↕	53.3 mm
↔	46.5 mm

No.38

3 min	
1	(328)
2	(079)
3	(807)
4	(513)
5	(502)
↕	52.5 mm
↔	38.9 mm

No.42

4 min	
1	(328)
2	(079)
3	(807)
4	(513)
5	(502)
↕	52.1 mm
↔	36.9 mm

No.46

4 min	
1	(328)
2	(079)
3	(807)
4	(513)
5	(502)
↕	53.0 mm
↔	42.0 mm

No.50

4 min	
1	(328)
2	(079)
3	(807)
4	(513)
5	(502)
↕	51.7 mm
↔	42.0 mm

No.39

6 min	
1	(328)
2	(079)
3	(807)
4	(513)
5	(502)
↕	53.3 mm
↔	46.4 mm

No.43

4 min	
1	(328)
2	(079)
3	(807)
4	(513)
5	(502)
↕	52.6 mm
↔	43.3 mm

No.47

4 min	
1	(328)
2	(079)
3	(807)
4	(513)
5	(502)
↕	52.5 mm
↔	42.8 mm

No.51

4 min	
1	(328)
2	(079)
3	(807)
4	(513)
5	(502)
↕	53.8 mm
↔	42.2 mm

No.40

5 min	
1	(328)
2	(079)
3	(807)
4	(513)
5	(502)
↕	52.9 mm
↔	43.1 mm

No.44

4 min	
1	(328)
2	(079)
3	(807)
4	(513)
5	(502)
↕	52.3 mm
↔	40.7 mm

No.48

4 min	
1	(328)
2	(079)
3	(807)
4	(513)
5	(502)
↕	52.8 mm
↔	43.9 mm

No.52

4 min	
1	(328)
2	(079)
3	(807)
4	(513)
5	(502)
↕	52.4 mm
↔	33.4 mm


No.53

















2 min	
1	(804)
2	(612)
3	(079)
4	(807)
5	(513)
6	(502)
↕	34.4 mm
↔	22.7 mm

No.55

4 min					
1	(804)	3	(079)	5	(513)
2	(612)	4	(807)	6	(502)
↕ 39.3 mm ↔ 75.4 mm					

No.57



7 min											
1		(804)	7		(804)	13		(079)			
2		(612)	8		(612)	14		(807)			
3		(079)	9		(079)	15		(513)			
4		(807)	10		(807)	16		(502)			
5		(513)	11		(513)						
6		(502)	12		(502)						
↕ 27.9 mm ↔ 121.9 mm											

No.54

2 min	
1	(079)
2	(807)
3	(513)
4	(502)
↕	39.8 mm
↔	25.6 mm

No.56

7 min											
1	(804)	5	(513)	9	(079)	13	(807)	17	(513)	21	(502)
2	(612)	6	(502)	10	(807)	14	(513)	18	(807)	22	(502)
3	(079)	7	(804)	11	(513)	15	(807)	19	(513)	23	(807)
4	(807)	8	(612)	12	(502)	16	(807)	20	(513)	24	(807)
↕ 23.4 mm ↔ 123.7 mm											



No. 58

13 min					
1	(079)	7	(513)	13	(079)
2	(807)	8	(502)	14	(807)
3	(513)	9	(079)	15	(513)
4	(502)	10	(807)	16	(502)
5	(079)	11	(513)		
6	(807)	12	(502)		
↕ 103.6 mm ↔ 94.9 mm					



No.60

5 min	
1	(513)
2	(807)
3	(513)
4	(807)
↕ 106.7 mm	
↔ 93.4 mm	



No.63

1 min	
1	(513)
↕ 147.2 mm	
↔ 61.8 mm	



No.59



No.61

4 min	
1	(513)
2	(807)
3	(513)
4	(807)
↕ 42.6 mm	
↔ 142.0 mm	



No.64

8 min					
1	(804)	9	(079)	17	(513)
2	(612)	10	(807)	18	(502)
3	(079)	11	(513)	19	(804)
4	(807)	12	(502)	20	(612)
5	(513)	13	(804)	21	(079)
6	(502)	14	(612)	22	(807)
7	(804)	15	(079)	23	(513)
8	(612)	16	(807)	24	(502)
↕ 73.3 mm ↔ 72.8 mm					

28 min					
1	(079)	17	(513)	33	(804)
2	(807)	18	(502)	34	(612)
3	(804)	19	(079)	35	(513)
4	(612)	20	(807)	36	(502)
5	(513)	21	(804)	37	(079)
6	(502)	22	(612)	38	(807)
7	(079)	23	(513)	39	(804)
8	(807)	24	(502)	40	(612)
9	(804)	25	(079)	41	(513)
10	(612)	26	(807)	42	(502)
11	(513)	27	(804)	43	(079)
12	(502)	28	(612)	44	(807)
13	(079)	29	(513)	45	(804)
14	(807)	30	(502)	46	(612)
15	(804)	31	(079)	47	(513)
16	(612)	32	(807)	48	(502)
↕ 218.4 mm ↔ 175.7 mm					



No.62

15 min					
1	(513)	4	(807)	7	(513)
2	(807)	5	(513)	8	(807)
3	(513)	6	(807)		
↕ 216.6 mm ↔ 175.7 mm					

Embroidery Pattern Color Change Table

Tabla de cambio de color para patrones de bordado

Tableau de changement de couleur des motifs de broderie

◆ Patterns for bobbin work

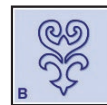
Bobbin work can only be performed in the "Embroidery Mode".

◆ Patrones para efectos decorativos con bobinas

Los efectos decorativos con bobinas solo pueden realizarse en el "Modo de bordado".

◆ Motifs pour le travail à la canette

Le travail à la canette ne peut être effectué qu'en « mode broderie ».



Note : Embroidery patterns for bobbin work are reversed when they have been sewn.

Nota : Los patrones de bordado para efectos decorativos con bobinas se invierten una vez cosidos.

Remarque : Les motifs de broderie pour le travail à la canette sont inversés lorsqu'ils sont cousus.



No.1



3 min	
1	(030)
↕	175.1 mm
↔	97.0 mm
1.5 m (1.7 yd)	
(0.9 m + 0.6 m)	

Time is based on the recommended 100spm.

El tiempo se basa en las 100 spm recomendadas.

La durée se base sur la vitesse recommandée de 100 points par minute.

Total length of thread needed to sew the pattern (to sew the pattern + to tie ends)

Longitud total de hilo necesario para coser el patrón (coser el patrón + atar los extremos)

Longueur totale de fil nécessaire pour coudre le motif (coudre le motif + nouer les extrémités)

All of the designs shown in the Bobbin work area are pictured in the machine mirrored or flipped.

Todos los diseños mostrados en el área de trabajo de la bobina se muestran en la máquina girados o invertidos.

Tous les motifs présentés dans l'aide du travail à la canette sont illustrés dans la machine à l'envers ou retournés.



No.2



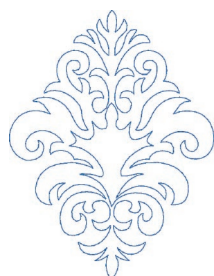
4 min	
1	(509)
↕	123.6 mm
↔	127.0 mm
1.6 m (1.8 yd)	
(1.0 m + 0.6 m)	



No.4



6 min	
1	(030)
↕	196.0 mm
↔	98.4 mm
2.3 m (2.6 yd)	
(1.7 m + 0.6 m)	



No.3



10 min	
1	(405)
↕	164.9 mm
↔	125.0 mm
2.8 m (3.1 yd)	
(2.2 m + 0.6 m)	



No.5



5 min	
1	(405)
↕	174.8 mm
↔	104.4 mm
1.8 m (2.0 yd)	
(1.2 m + 0.6 m)	

Refer to the instruction and reference guide for the sewing machine for details on how to embroider bobbin work patterns.

Para obtener más información sobre cómo bordar patrones para efectos decorativos con bobinas, consulte la guía de referencia y de instrucciones de la máquina de coser.

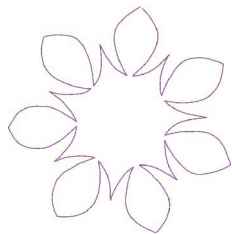
Reportez-vous au guide d'instructions et de référence de la machine à coudre pour plus de détails sur la broderie des motifs pour le travail à la canette.

Embroidery Pattern Color Change Table Tabla de cambio de color para patrones de bordado Tableau de changement de couleur des motifs de broderie

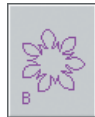
Note : Embroidery patterns for bobbin work are reversed when they have been sewn.


Nota : Los patrones de bordado para efectos decorativos con bobinas se invierten una vez cosidos.

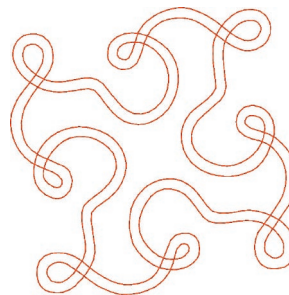
Remarque : Les motifs de broderie pour le travail à la canette sont inversés lorsqu'ils sont cousus.



No.6




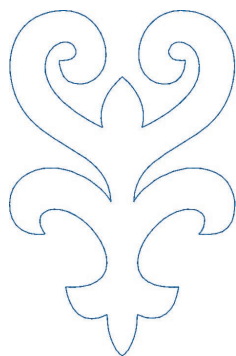
4 min	
1	(620)
↑	135.5 mm
↔	133.3 mm
 1.6 m (1.8 yd) (1.0 m + 0.6 m)	



No.10




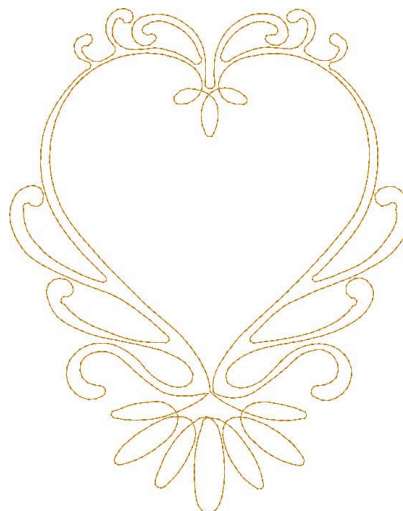
7 min	
1	(030)
↑	126.2 mm
↔	125.9 mm
 2.4 m (2.7 yd) (1.8 m + 0.6 m)	



No.7




3 min	
1	(405)
↑	153.9 mm
↔	100.0 mm
 1.6 m (1.8 yd) (1.0 m + 0.6 m)	



No.11




10 min	
1	(328)
↑	223.5 mm
↔	177.3 mm
 3.5 m (3.9 yd) (2.9 m + 0.6 m)	



No.8




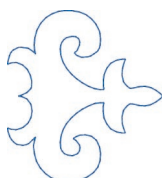
2 min	
1	(509)
↑	63.3 mm
↔	75.1 mm
 1.1 m (1.2 yd) (0.5 m + 0.6 m)	



No.12




8 min	
1	(542)
↑	123.5 mm
↔	135.5 mm
 2.7 m (3.0 yd) (2.1 m + 0.6 m)	



No.9




2 min	
1	(405)
↑	75.0 mm
↔	67.7 mm
 1.0 m (1.1 yd) (0.4 m + 0.6 m)	



No.13



6 min	
1	(209)
↑	81.5 mm
↔	118.3 mm
 2.2 m (2.4 yd) (1.6 m + 0.6 m)	

Color Thread Conversion Chart

Tabla de conversión de hilos de color

Tableau de conversion des fils de couleur

*											
No.	Color Name	R.A. Polyester	R.A. Rayon	Isacord Polyester	Madeira Polyneon	Madeira Rayon	Sulky Polyester	Sulky Rayon	Gütermann Dekor	Country	Embr.
1	Pink	5523	2223	*0180	1921	1121	1224	1108	*4830	155	085
2	Dusty Rose	5675		2155	1816	1108					
3	Petal Pink	7701	2255			1015					
4	Light Pink	9030		1860							
5	Light Coral	9078			1915			1148			
6	Ginger Jar	9080		2170		1115					
7	Heather Mist	9070		1755							
8	Champagne	9063		2051							
9	Dark Mauve	9015		2153				1119			
10	Heather	9164		2152							
11	Neon Pink	5711			1948						
12	Comfort Pink	9077				1119			5435		
13	Mountain Rose	5795	2373			1315					
14	Cherry Pink	5544	2244								
15	Carnation	5537	2509					1188			
16	Salmon	9073	2553	1840		1018					
17	Shrimp	5546						1154			
18	Dark Coral	9065	2246								
19	Bitterroot	7709	2277								
20	Burgundy	5549	2249	2022		1182		1169			
21	Warm Wine	5796	2622		1782			1309			
22	Russet	5552		2123	1781						
23	Plum	9055	2498			1389					
24	Maroon	5676		2115	1919						
25	Royal Crest	9162							5400		
26	Hot Pink	5560							5385		
27	Ruby	5797				1183					
28	Dark Fuchsia	5804	2504	*2300	1984	1383	1533	1533	*4810	126	107
29	Carmine	5561	*2419	2300	1986	*1081	1511	*1511	5315	158	807
30	Dark Pink	9161			1994				4810		
31	Deep Rose	9168	*2508	2520	1721	*1117	1154	1307	*4941	024	086
32	Begonia	5528				1117					
33	Azalea	7712		2220							
34	Rubine Red	9012				1186			4740		
35	Strawberry	5732		2320	1910						
36	Devil Red	7706	2507	1906	1986						
37	Candy Apple Red	5807		1805		1081					
38	Hollyhock Red	9006	2267	1912				1311			
39	Toasty Red	9002	2418	1902		1181					
40	Wild Fire	5567							4700		
41	Red	5678	2505	2101	1637	*1037	1037	*1037	*4740	149	800
42	Jockey Red	5581			1747						
43	Radiant Red	5566	2219					561	4731		
44	Red Berry	5718			1839						
45	Foxy Red	5563			1838	1147		1147			
46	Lipstick	5533	2263	1900							
47	Christmas red	9170	2420	1800		1037		1317			
48	Scarlet	5519	2281	1904							
49	Deep Scarlet	5811		1913							
50	Cranberry	5570	2270	1911					4160		
51	Dark Cherry	5908			1974						
52	Flesh Pink	5677	*2347	*2170	1915	*1015	1064	*1064	*5136	152	124
53	Bisque	5553		1551		1019					
54	Flamingo	5558	2414	1532					4865		
55	Melon	5594	2512								
56	Peach Melba	9058		1600							
57	Watermelon	5712							4595		
58	Honeysuckle	7713		1521							
59	Dark Orange	9056		1335	1621	1021		1021			
60	Clear Blue	9029									
61	Blue Joy	9032	2598	0145							
62	Ice Blue	5600	2300			1074		1074			
63	Medium Blue	9089						1248			
64	Rockport Blue	5836			1960	1360					
65	Pastel Blue	5682	2239	3951	1953						
66	Baby Blue	5539					1202				
67	Sky Blue	5506	*2239	*3641	1828	*1028	1196	*1196	*6575	512	019
68	Light Blue	5683	*2222	*3640	1932	*1276	1074	*1074	*6280	150	017
69	Lake Blue	5604	2206		1874	1075		1028			
70	Happy Blue	9039		3820	1675	1028		1029			
71	Ultra Blue	5733						1134			
72	Tropic Blue	5734	2530					1196			
73	Cornflower Blue	5601	2526	3641	1830	*1335	1028	1076	*5900	015	070
74	Blue Moon	9081				1375					
75	Sapphire	5545	2529			1029		1253	6010		
76	Slate Blue	5575		3953							
77	Dark Blue	5641	2341		1964						
78	Deep Blue	9075	2612	3444	1775	1364					

* Closest color match * Concordancia con el color más cercano * L'assortiment de couleurs le plus proche

* * *											
No.	Color Name	R.A. Polyester	R.A. Rayon	Isacord Polyester	Madeira Polyneon	Madeira Rayon	Sulky Polyester	Sulky Rayon	Gütermann Dekor	Country	Embr.
79	Wonder Blue	5877	2577			1160		1172			
80	Baltic Blue	5820		4032							
81	California Blue	5689	2520	3901							
82	Cerulean	5801	2441			1176		1534			
83	Solar Blue	5741	2442		1797						
84	Electric Blue	5829	*2528	3815	*1893	*1297	1250	*1250	*6746	564	420
85	Pacific Blue	5520		3600							
86	Blue	5684	*2220	*3543	1829	*1177	1076	*1076	*6010	586	405
87	Imperial Blue	5602	2302	3622		1042		1143			
88	Fleet Blue	5750			1966						
89	Blue Ribbon	5739	2613		1742			1044			
90	Light Navy	5603	2603		1643	1044		505			
91	Medium Navy	5824	2303	3323				1043			
92	Empire Blue	5686		3355	1967						
93	Blue Ink	5909				1243					
94	Midnight Navy	5687		3344							
95	Dark Sapphire	5580	2436		1842				6655		
96	Blue Suede	5738	2220	3544	1642			1535			
97	Ultra Marine	5736	2429	3612	1676	1166	1042	572	*6746	575	406
98	Royal Blue	5510	2280			1076					
99	Cobalt Blue	5685		3543				526			
100	Prussian Blue	5737	*2627	*3344	*1961	*1076	1535	*1535	*6655	588	007
101	Nassau Blue	9022	2625					1293			
102	Chow Blue	9171		3102	1767						
103	Paris Blue	5583	2304	3640		1030					
104	Blue Lavender	9048	2384	3331	1830	1143					
105	Medium Lavender	5706	2406	3251							
106	Lavender	5586	*2276	*3045	1911	*1261	1193	*1193	*5865	604	804
107	Tulip Lavender	9167			1630						
108	Wisteria Violet	5587	2287	*2830	*1631	*1311	1032	1296	*6010	003	607
109	Queen Purple	9031						1112			
110	Livid Lavender	9166			1943	1330					
111	Purple Chariot	9049						1242			
112	Purple Maze	5728	2742	3110							
113	Deep Purple	5803						1235	5885		
114	Purple Accent	5731			1922	1112					
115	King Purple	9053	2431			1312					
116	Royal Purple	5681	*2381	*2711	1788	*1188	1192	*1192	*6660	636	869
117	Mod Purple	9071		2715		1033		1255			
118	Purple	5554	2430	*2905	1880	1122	1122	1122	5727	635	614
119	Violet	5588	*2285	*3541	1631	*1033	1194	*1194	*5729	624	613
120	Pale Purple	9088		2910		1032		1194			
121	Magenta	5592	2426	*2764	1710	*1235	1191	*1191	*5885	625	620
122	Light Lilac	9016	*2588	*2650	1911	*1031	1121	*1121	*	133	810
123	Lilac	9009	*2424	*2830	1831	*1080	1080	1080	*5827	623	612
124	Siberian iris	9041						1031			
125	Fantasia Pink	9044				1120			4830		
126	Dream Pink	9040		2250					5185		
127	Exclusive Pink	9074		2160		1014					
128	Pink Splendor	9037						1224			
129	Wild Pink	5559			1921	1309		1515			
130	Amber Red	5591	2590	*1725	1942	1310	1119	*1119	*5300	212	333
131	Raspberry Ice	9017		2506	1710	1188					
132	Aubergine	9046		2600	1172						
133	Bambino Blue	9079		3910	1827						
134	Blue Fringe	9054		4113	1694			1090			
135	Marine Aqua	5607		4010				1206			
136	Blue Wisteria	9052		4101	1895						
137	Angel Blue	9060				1295					
138	Mallard Blue	5821	2446		1890						
139	Peacock Blue	5810	*2515	4116	*1685	*1052	1206	*1206	*7030	057	415
140	Dark Jade	9143		4643	1652	1252					
141	Paradise Green	9104	2549	4515		1290					
142	Perpetual Teal	9062			1762						
143	Venus Blue	9100		4033		1162					
144	Feather Blue	5522	2222	4250		1292			8700		
145	Mint Julep	5610						1045			
146	Sea Glass	9141				1088					
147	Turquoise	5504	2492		1846						
148	Mystic Teal	5743	2445			1293		1230			
149	Aqua	5792				1090		1288			
150	Oceanic Green	5746							7550		
151	Tempest Turq	9102							7543		
152	M.D. Green	5745				1246			7337		
153	Dark Teal	5809	2514			1298		571			
154	Ocean Aqua	9142	2735			1052		1551			
155	Blue Spruce	5849				1304					
156	Newport	5850	2329			1392		1287			

* Closest color match * Concordancia con el color más cercano * L'assortiment de couleurs le plus proche

Color Thread Conversion Chart
Tabla de conversión de hilos de color
Tableau de conversion des fils de couleur

*											
No.	Color Name	R.A. Polyester	R.A. Rayon	Isacord Polyester	Madeira Polyneon	Madeira Rayon	Sulky Polyester	Sulky Rayon	Gütermann Dekor	Country	Embr.
157	Green Bay	5755		5233		1391					
158	Seacrest	5578	*2517	*5220	1647	*1219	1077	*1077	*8470	505	542
159	Kiwi Green	9107						1212			
160	Olive Green	5502	2202	5664	1904	*1396	1174	*1228	*8320	476	519
161	Harbor Green	5692	2631					525			
162	Special Green	5805			1970	1370					
163	Dark Army Green	5853		5944	1756	1357					
164	Heavy Green	7711	2553		1705	1303		1103			
165	Alpine Green	9151				1394					
166	Field Green	5760	2728					1550			
167	Green Sail	5759	2459		1996			1286			
168	Midnight Teal	9146			1690			1536			
169	Sea Mist	5693	2517		1645	1045					
170	Willow Green	5611	2311	5230		1245		1280			
171	Tealeaf	9106		5220					8470		
172	Isle Green	5612			1847			640			
173	Forest Pine	9144		5210					8375		
174	Jade	5813				1280					
175	Peppermint	5690		5101		1279	1503	1503			
176	Teal Green	5751	*2214	*4410	1879	*1298		1517	*8535	483	534
177	Deep Green	5615	2460	5326	1703	*1370	1208	*1208	8067	467	808
178	Classic Green	9169						1232			
179	Dark Pine Green	5584	2323			1103		1174			
180	Green	5509	2209	5633	1770						
181	Irish Green	5812		5422	1989						
182	Emerald Green	5508	2454	*5115	1750	*1250	1079	*1079	*8870	485	507
183	Shamrock	9092	2208	5515		1250		1079			
184	Moss Green	9091	*2321	*5833	1770	*1369	1176	*1176	*8320	446	515
185	Light Kelly	7710		5510	1651	1051		1051			
186	Kelly	5540		5513		1369					
187	Leaf Green	5514	2214	*5115	1749	1050	1510	1049	*8320	463	509
188	Slightly Green	9149		5650				1100			
189	Green Oak	5619	2211		1900						
190	Mint Green	5511	*2320	*5531	1702	*1302	1047	*1047	*8375	461	502
191	Fresh Green	9153	2319	*5610	1706	*1102	1209	*1209	*8470	442	027
192	Peapod	5756	2456					1322			
193	Pastoral Green	5621	2279			1048		1510			
194	Light Avocado	9108		5822					8595		
195	Harvest Green	9147	2578			1249					
196	Green Dust	5757						1332	8320		
197	Lime Green	5622	2226	5912	1848	1170	1177	*1177	*8320	444	513
198	Erin Green	5620	2321					1177			
199	Foliage Green	5842				1190					
200	Sunflower	5861	2462	0310	1924	1083		1023			
201	Gold	9124	2201	0546	1670			1549			
202	Autumn Green	5843	2543		1792	1191					
203	Olive drab	9154		6133					8990		
204	Meadow	5526		5933	1769						
205	Sage	9152	2595					1176	8870		
206	Dark Olive	9122	*2317	0465	1796	*1156	1156	*1156	*8840	473	517
207	Army Green	9155		6156	1794						
208	Coronation Gold	9014	2557	0520	1866	1066					
209	Lemon Yellow	5625	2325	*0250	1623	1023	1067	*1067	*1460	342	202
210	Bright Yellow	9051		0600		1068			1570		
211	Yellow	5860	*2213	*0605	1980	1124	1187	1124	*1440	043	205
212	Ombre Gold	9001		0311	1971	1069		1083			
213	Manila	5766		0608	1624			523			
214	Havana Yellow	9127		0706	1925						
215	Goldenrod	5542		0700		1125					
216	Warm Sunshine	9172	2558		1683	1024		1023	1585		
217	Pollen Gold	5856		0702	1773						
218	Day Lilly	9010		0824	1725			1025			
219	Star Gold	5708		0713		1172					
220	Golden Sunshine	5765		0811		1137		0567			
221	Brass	9109	2395	*0221	1791	*1192	1159	0502	*1625	404	328
222	Orange	5694	2247	*1102	1951	*1137	1024	*1024	*1770	335	208
223	Deep Gold	5512	2602	0904	*1772	*1172	1025	*1025	*1730	354	214
224	Harvest Gold	5770	*2626	*0232	1971	*1024	1124	*1124	*1695	334	206
225	Yellow Mist	5709	2394			1065		1238	1625		
226	Mustard	9050			1771						
227	Copper	5595		0922					1956		
228	Light Cantalope	5710			1946						
229	Grilled Orange	9072	2236			1078					
230	Orangeade	5767	2513	1301	1779						
231	Paprika	5536			1878	1146			3570		
232	Soft Pink	9159			1837						
233	Vermillion	9023	*2219	1701	1779	1307	1184	*1184	*4160	148	030
234	Saffron	5629	2329	1703				1037			

* Closest color match * Concordancia con el color más cercano * L'assortiment de couleurs le plus proche

Color Thread Conversion Chart
Tabla de conversión de hilos de color
Tableau de conversion des fils de couleur

*											
No.	Color Name	R.A. Polyester	R.A. Rayon	Isacord Polyester	Madeira Polyneon	Madeira Rayon	Sulky Polyester	Sulky Rayon	Gütermann Dekor	Country	Embr.
235	Auburn	5772	2623					1263			
236	Terra Cotta	5634		1514		1039					
237	Dark Rust	5505	2205	1312		1179		1181			
238	Peach Mist	9157			1937						
239	Dark Melon	9068		1352		1152			5040		
240	Tawny	5556	2256		1882			1543	1790		
241	Soft Peach	9047		1362		1226					
242	Rust	5589		1332				0621			
243	Dark Apricot	9038	2330	1220							
244	Tangerine	5518		1114	1965		1078			336	209
245	Pumpkin	5630			1952		1065			322	126
246	Sunburst	5769	2469		1678			1078			
247	Gold Spice	5698						0562			
248	Honey	5547			1870	1155					
249	Almond	5779				1173					
250	Reddish Brown	5781			1753		1021	0568		264	337
251	Clay Brown	5590	2290	0932	1621		1158	1158		224	339
252	Russet Brown	5702			1726		1126			414	330
253	Cream Brown	5761	2732		1866	1061	1061	1070	1195	331	010
254	Creamy Yellow	5564			1861	1026	1135	1055		370	812
255	Glow	5534	2234	0640		1270					
256	Pistachio	5550			1738						
257	Golden Tan	5870			1884				2610		
258	Ginger	5633						1159			
259	Temple Gold	9165			1772						
260	Tan	9130	2231	0842		1253		1126			
261	Suntan	9132		1141	1927						
262	Candy Tan	9094		0651		1055					
263	Beige	5598			1738		1127			012	843
264	Rattan	5774	2493	1123		1126					
265	Dark Beige	5524		0934	1855	1056					
266	Antique Gold	5906		0822		1192					
267	Bronze	5815	2478			1144		1170			
268	Coffee	5777				1329					
269	Linen	5635					1082			025	307
270	Seashell	5776	2298	1172	1682	1128					
271	Ecrú	5532	2232			1149		1017			
272	Salmon Pink	5773			1816		1225			122	079
273	Light Cocoa	5778		1154	1657				2670		
274	Dusty Peach	5638			1853			0619			
275	Light Brown	5789		0832	1729		1128			255	323
276	Khaki	5636			1939		1055			242	348
277	Coffee Bean	9156		1055	1945	1058		1057			
278	Brownstone	9042		1342	1758	1378					
279	Deep Brown	5551	2251		1658	1145		1186	2335		
280	Dark Brown	5637	2566		1859		1129			717	058
281	Brown	5672						1129			
282	Happy Trail	9087	2488	1565		1057					
283	Dark Taupe	9128		0722		1054					
284	Warm Gray	9126		0861	1860		1218			706	399
285	Deep Gray	9158	2541	1874		1131					
286	Metal	9111	2407	0111		1041		1041			
287	Black Chrome	5841	2411	1375	1795						
288	Charcoal	5865	2729		1640	1239		1220			
289	Medium Gray	5517	2585	0131		1118					
290	Cool Gray	9112		2674				1328			
291	Smoke Gray	9163		2576	1854			1179			
292	Pewter	9114			1840					745	704
293	Dark Gray	5565			1841		1220			747	707
294	Gray	5782	2741	1972	1640		1219	1011		734	817
295	Light Gray	5785	2733	0150				1327			
296	Chrome	5839				1086		1325			
297	Silver	5640			1812	1087	1011			020	005
298	Black	5596	2296	0020	1800	1000	1005	1005	9435	100	900
299	Natural White	5642	2342			1003		1071			
300	White	5597	2403	0010	1801		1001	1002		000	001

Note: The conversion chart is based on Embroidery thread. The color shades may vary with the different brands listed on the chart. If unsure of a particular color(s), please sew test. Robison Anton (R.A.), Isacord, Madeira, Sulky and Gütermann are respectively registered trademarks. Actual colors may vary slightly from the chart.

Nota: La tabla de conversión está basada en hilo de bordar. Los tonos de color podrán variar con las diferentes marcas listadas en la tabla. Si tiene dudas sobre un color(es) particular, haga un cosido de prueba. “Robison Anton (R.A.)”, “Isacord”, “Madeira”, “Sulky” y “Gütermann” son marcas registradas respectivamente. Los colores verdaderos podrán variar ligeramente con respecto a los de la tabla.

Remarque: Le tableau de conversion est basé sur un fil de broderie. Les nuances de couleur peuvent varier en fonction des marques énumérées dans le tableau. En cas de doute sur un coloris, faites un essai de couture. « Robison Anton (R.A.) », « Isacord », « Madeira », « Sulky » et « Gütermann » sont des marques déposées respectives. Les couleurs réelles risquent d’être légèrement différentes de celles du tableau.

English
Spanish
French
882-D81
Printed in Taiwan



XF3653-001