



# Baby Lock Altair (Model BLTA) Software Update Version 2.11

March 2024

## Introduction

If the software version of your Altair (Model BLTA) is earlier than version 2.11, an update program is now available for download to improve its performance.


- ✧ To learn new features, read the instructions about “Features Added with Update Ver. 2.0” in the **Instruction and Reference Guide Addendum**.

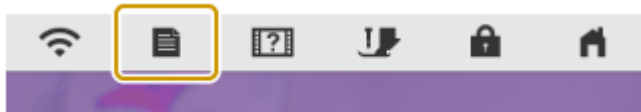
## Version 2.11 update will provide the following changes:



1. Improved functionality during sewing.
2. Improved PHX data compatibility with multi-needle embroidery machines.
3. Revised wording of some item names for Upgrade Kit 1 features. (Spanish, Portuguese, Russian, Danish, Finnish).

## How to confirm the software version of your BLTA

1. Press the power switch to "I" to turn on your machine.
2. If the opening movie is played, touch anywhere on the LCD screen.

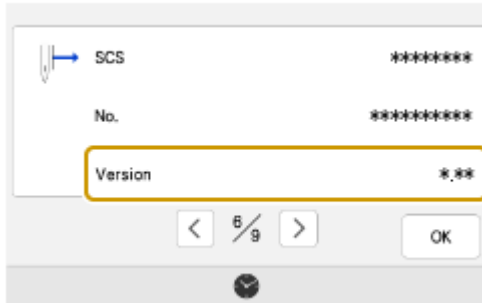
3. Press  (Machine setting key) to display the machine's settings screen.



4. The machine's settings screen appears.
5. Switch the settings screens by using  (Previous page key) or  (Next page key) to display the machine's program version.



6. Check the version shown on the display as described below.



- If "**Version**" is already "**2.11**" or later, it is not necessary to update your machine.
- If "**Version**" is lower than "**2.11**", update your machine's software with the Version 2.11 update file.

7. Turn off the machine.

## How to update your machine's software

- You must use a USB flash drive to update your machine's software if the version is lower than 2.02.
- You may use your machine's wireless network connection to download the update if your version is 2.02 or higher. You must have a strong Wi-Fi signal to use this option. See Instruction & Reference Guide Addendum for more information.

### **\*\*\* NOTE \*\*\***

**Do not turn off your machine while the machine is saving the update software to itself.** If the machine's power is turned off while saving the update software, it may result in damage to the machine.

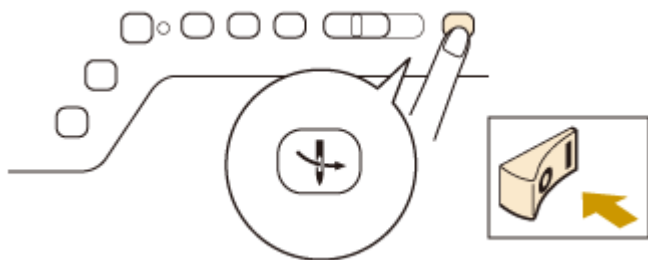
## How to update your machine's software using a USB flash drive

You must **use a formatted** 8GB or 16GB USB flash drive to ensure that no data exists on the USB used to update your machine's software.

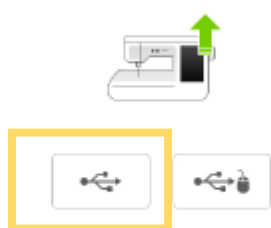
1. Insert the USB flash drive into the USB port on the computer.
2. Copy only the update file, [W V211 T Cmb P.upf](#), to the USB flash drive.
3. Safely remove the USB flash drive from the USB port on the computer.

**baby lock**

4. With the machine **OFF**, press the "**Automatic Threading**" button while turning the main power switch to **ON**.

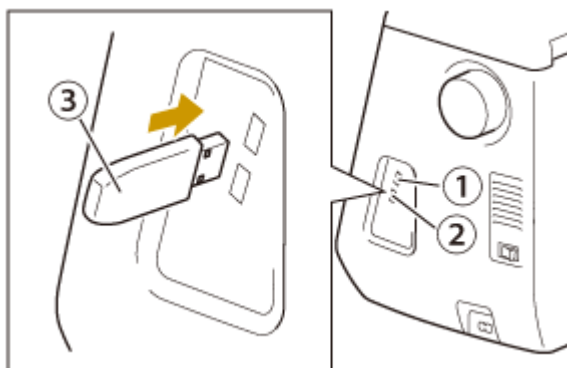


5. The upgrade screen will appear on the LCD. Press the highlighted key.



: Press this key to load the program file from the USB flash drive plugged into the USB port for media

6. Insert the USB flash drive into the USB port on the machine corresponding to the USB key pressed in step 5.



① USB port for media

② USB port for mouse

③ USB flash drive



7. Press Load key.



Press LOAD after connecting the USB media containing the upgrade file.



8. **Do Not** turn off your machine while the update file is loading.
9. When the message "Upgrade complete" appears, the update file has been loaded.



Upgrade complete.

10. Remove USB flash drive from the USB port on the machine.
11. Turn the machine off and on again.
12. Your machine's software has been updated to version 2.11.



## Baby Lock Altair (Model BLTA) Update History

➤ **Version 2.10 update provided the following changes:**

1. Improved editing function on embroidery patterns.
2. Improved embroidering function on couching patterns.
3. Revised wording of some messages and part/item names (changes vary by display language).
4. Improved thumbnail display on pattern selection screen.
5. Improved stitch tapering function for Upgrade Kit 1.

➤ **Version 2.02 update provided the following changes:**

The following functions have been enhanced with software version 2.02.

**Note:** Some memorized settings might be altered. For best results, test stitch before using saved stitches.

### (1) Sewing

- Free motion couching stitch  
The C-01 (free motion couching stitch) has been moved from the Q category to the **S category**, and the pattern number has been changed to **S-01**.

### (2) Embroidery

- Embroidery Frame – Magnetic Frame EMF 300 (optional accessory)  
300 mm (H) × 180 mm (W) (approx. 12 in. (H) × 7 in. (W)) may be used with this machine model.
- Automatic lowering of the presser foot  
When the [Embroidery Foot Auto Down] in the machine settings screen is set to [ON], pressing the Start/Stop button when the presser foot is raised, automatically lowers the presser foot before starting embroidering.
- Appliqué distance  
The procedure for specifying [Embroidery Appliqué Distance] has changed.

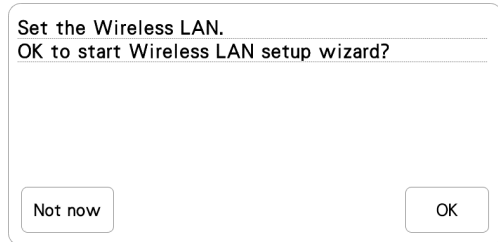
### (3) IQ Designer

- Stitch type  
The Stitch type appears below the color bar of the line tool key.
- The Decorative Fill stitches key in [Region Property} has been changed.

### (4) Other functions



- Update procedure using wireless LAN connection  
If the machine is connected to a wireless network with a **strong, reliable connection**, update files can be downloaded directly to the machine using this network.
- Message for wireless LAN  
The following message will appear after turning on the machine if the wireless network connection has not been set up.



- Tutorial videos  
Some tutorial videos have been updated.
  - [KIT I] has been added to the settings screen.
4. Adjusted the height of the embroidery foot when moving the embroidery frame.
  5. Updated the reset function in the 'Reset to Default' menu.
  6. Improved machine's functionality of opening and closing the shutter of take-up lever.
  7. Improved machine's functionality of adjusting the brightness of the embroidery foot W+ with LED pointer.
  8. Improved machine's functionality of the color visualizer function when displaying sample color schemes.
  9. Adjusted the font size of the decorative fill stitch settings in IQ Designer.
  10. Improved machine's functionality so that the grid is displayed on the stitch setting screen in IQ Designer.
  11. Improved machine's functionality when embroidering with certain embroidery frames.
  12. Revised the explanation for stitch number 1-15 "3 steps elastic zigzag".
  13. Improved machine's functionality of automatic needle threading in the sewing mode.
  14. Improved machine's functionality of selecting character or decorative stitch pattern when the twin needle mode is set.
  15. Improved screen display when "French" is the display language.

➤ **Version 1.50 update provided the following changes:**

Embroidery

1. Thread tension changed from the default setting will remain after turning the machine off and on.

Other functions



2. **“Reset to Default”** menu is added to the settings screen.  
All saved data, customized settings and network information in the machine can be erased.
- ✧ To learn new features, read the instructions **“Features Added with Update Ver.1.50”**.
3. Improved the automatic presser foot lifting function that lowers the presser foot at the start of sewing.
4. The foot control communication with the machine has been optimized

➤ **Version 1.11 update provided the following changes:**

1. Ensure proper detection of available Wi-Fi channels.

➤ **Version 1.10 update provided the following changes:**

2. Reduced operating noise when using the Digital Dual Feed Foot.
3. The optional magnetic frame EMF180 can be recognized on the machine.  
The maximum embroidery area available is 180mm x 130 mm (7 inches x 5 inches).
4. Improved machine's functionality of the thread color sequence display on the screen when using a .pes file that contains user-defined colors.

➤ **Version 1.04 update provided the following changes:**

1. Improved machine's functionality to move needle forward or backward through the stitching sequence using the Forward/Backward keys.
2. Improved machine's functionality of pattern preview function.

➤ **Version 1.03 update provided the following changes:**

1. Improved machine's functionality for the following features.
  - IQ Designer
  - Thread trimming function of jump stitch
  - Receiving data from IQ Intuition Positioning App
  - Color Visualizer function
  - Embroidery editing function
  - Dual feed foot function
  - Setting of the initial stitch page
  - Twin needle mode function
  - Calibration screen for LED pointer position
1. The thread brand name "Simplicity Pro" has been changed to "PaceSetter Pro".

➤ **Version 1.02 update provided the following changes:**



1. Improves display alignment of embroidery pattern with a background image on the real preview screen.